

Agenda Item:	III B: Information/Discussion Item
Date:	May 18, 2023
To:	Magnolia Educational & Research Foundation dba Magnolia Public Schools (“MPS”) Board of Directors (the “Board”)
From:	Alfredo Rubalcava, CEO & Superintendent
Staff Lead(s):	Dr. Brenda D. Lopez, Chief External Officer Site-Based Community School Coordinators at each Magnolia Science Academy (MSA)
RE:	Magnolia Public Schools Community Schools Initiative: Authentic Community Engagement

Action Proposed:

No action is needed. This item is solely information but may spark interest and further conversation.

Purpose:

The purpose of today’s presentation is to inform and update Board members as well as the public about our year-long glows, growth, and success of the community School process, and rather than have you hear it from me, I am providing space and place for you to hear directly from our Community School Coordinators leading the work daily in their individual learning communities. We will also hear testimonials from Educational Partners to hear about their lived experience with community school work.

Background:

In 2021, the State of California made a significant \$3 billion dollar investment to convert several thousand schools in historically under-invested neighborhoods into centers of community life and providers of vital services for families as well as students.

In 2022, Magnolia Public Schools led by Dr. Lopez, CXO, applied for nine community school planning program grants; all nine schools were awarded 200K per school for a 1-year grant. The grant would fund building a solid foundation for all our schools anchored in the four pillars of the community schools framework.

- Integrated Student Supports
- Expanded and Enriched Learning Time and Opportunities
- Active Family and Community Engagement
- Collaborative Leadership and Practices

In 2023, Magnolia Science Academy San Diego was the 10th school site in our network to be awarded the CCSPP Planning Grant.

Analysis:

Community school work is an ongoing process that entails many moving parts. It especially encompasses the commitment once heard at a Multi-Systems of Support (MTSS) Conference *Nothing about us without us*. The meaning of this phrase represents that before decisions are finalized regarding resources,



allocating funds, and investing in partnerships we need to authentically engage our Educational Partners (students, staff, families, and community members) throughout the school year. In order to start this process, each school site transitioned from having a school site model to a Parent Advisory Committee (PAC) Group serving the role of a steering committee. Our stretch goal in the next two years is to create an organizational-level steering committee to inform the overall community schools work grounded in data (both quantitative and qualitative) with decision-making.

Impact:

Continued growth over the next five years and beyond!

Budget Implications:

\$9.98 Million towards continuing with the implementation of Community School work across eight school sites.

Exhibits: Slide Deck: Magnolia Community School Initiative

Magnolia Community Schools Initiative 2022-2023

CCSPP Planning Cohort



Magnolia's Mission and Vision

MISSION: Magnolia Public Schools provides a safe and nurturing community using a whole-child approach to provide a high-quality, college preparatory STEAM educational experience in an environment that cultivates respect for self and others.

VISION: Graduates of Magnolia Public Schools commit to building a more peaceful and inclusive global society by transforming traditional ideas with creative thinking, effective communication, and the rigor of science.

Background

In 2021, the State of California made a significant \$3 billion dollar investment to convert several thousand schools in historically under-invested neighborhoods into centers of community life and providers of vital services for families as well as students.

In 2022, Magnolia Public Schools applied for nine community school planning program grants, all nine schools were awarded \$200K per school for a 1-year grant. The grant funds opportunities to build a solid foundation for schools anchored in the four pillars of the community schools framework.

- Integrated Student Supports
- Expanded and Enriched Learning Time and Opportunities
- Active Family and Community Engagement
- Collaborative Leadership and Practices

In 2023, Magnolia Science Academy San Diego became the 10th school site in our network to be awarded the CCSPP Planning Grant for the 2023-2024 school year.

Timeline

June - July 2022

Hired nine Community School Coordinators to lead the school site work, Conducted an inventory of current partnerships within MPS and external partnerships. Started to plan, research and connect to local community organizations.

August - September 2022

Introduced our community model to students, families, staff, community as well as the roles and responsibilities of CSCs and in some cases explain the difference between the PACE work.

October - November 2022

Conducted Assets and Needs Assessment Survey and Focus Groups to better understand glows and grows as a community. Continue to build trust and connection with learning community.

December 2022 - January 2023

Reviewed data results to form an action plan to better support of students, families and staff. This helped identify needed programs and partnerships.

February - March 2023

Parallel to leading the planning work, developed eight site specific implementation plans and applied for the CCSPP Implementation Grant in March.

May 2023

The list of Implementation Plan Grant awardees released and approval set for May 18th on the California State Board of Education (SBE) agenda. Each Magnolia School that applied is on the award list, totaling over almost 10 million dollars across eight schools for the next five years.

Network wide impact



1

What does it look like for Magnolia families to thrive?

2

What does a dream community school look like?

Collaborative Leadership and Practices

- Parent Advisory Council (PAC)
- Parent Task Force (PTF)
- Assets & Needs Assessments
- Data Walks
- Focus Groups
- Councilmember CD3, Sen. Caroline Menjivar, Congr. Tony Cardenas



Expanded and Enriched Learning Time and Opportunities

- Saturday School
- Before/After school tutoring
- Summer School
- College Field Trips



Integrated Student Supports

- 7 on campus Mobile Clinics (SCMC)
- Backpack donations
- Student essential donations



Active Family and Community Engagement

- Parent Task Force (PTF)
- Parent Advisory Council (PAC)
- Coffee with Admin
- Community Resource Fairs
- 10 week Parent English Language Course

MSA 1 Key Takeaways

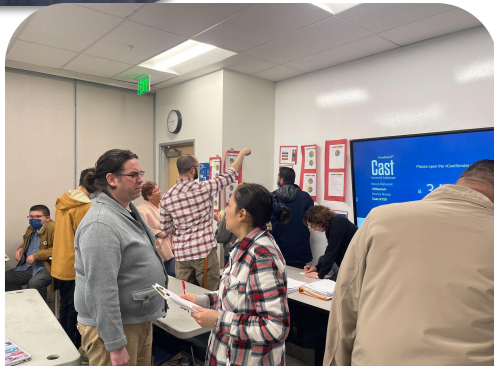


85% of our students know who to reach out to on campus for academic support other than their teachers.

89% of our families feel like staff at our Magnolia school take their concerns seriously and get responses in a timely manner.

80% of our staff feel like there are positive dynamics among staff/students and staff/parents. (Data from our October Assets and Needs Assessment)

"They help me when I'm down so I rise like a warrior" - MSA1 Student





PROUD TO BE A COMMUNITY SCHOOL

California Community School Partnership Program

OUR GROWTH



Expanded Learning Time and Opportunities



Active Family and Community Engagement



Integrated Student Support



Collaborative Leadership and Practices



Leading Together, Our Community Model

KEY TAKEAWAYS



Of students believe our school provides opportunities for students to share their voice in student councils, clubs, and leadership programs.

*Data from October 2022 CS Assets & Need Assessment Survey



Of students believe they have a good overall school experience.

*Data from Spring 2023 Panorama Educational Survey

Students believe our school provides a safe environment for all students.



*Data from October 2022 CS Assets & Need Assessment Survey



*Data from Spring 2023 Panorama Educational Survey

"I am happy I can finally ask for help without feeling embarrassed. My parents work really hard to get us what we need but sometimes it's not enough. Now I have shoes and cool clothes to wear. All free! Thank you!" -MSA2 Student



Local Control and Accountability Plan



CONGRESS.GOV



MAGNOLIA
SCIENCE ACADEMY 3

CARSON

MSA 3

August '22 - September '22 - Introduced the Community School Model to our students, families and community as well hold our 1st Parent Advisory Meeting in October

October '22 - November '22 - Conducted our Assets and Needs Survey school wide with students, staff & families participating. We also conducted Focus Groups with our students, families and staff to understand the needs of our community.

December '22 - January '23 - Discussing our findings from our Assets and Needs Survey with our team, students and parents. Then outlining a plan of action to address the survey. Introduced our school with Crossroads to help mentorship with students and conducted a campus clean up!

February '23 - June '23 - Securing beneficial partnerships for our students, staff and families



Fall Resource Festival/Back to School Night Fair



Holly J Mitchell awarded MSA 3 \$5,000 for Backpacks, school supplies, and hygiene kits



Campus Clean up

VIPERS Display of Community



Where were the schools before the CCSPP?

- Few partnerships with the community
- Parent engagement was put on pause due to COVID

Where are we with the CCSPP model?

- Partnership with Socal Crossroads in school site
- Parent College with collaboration with the community (AADAP, DMH, Wilmington Community Clinic, Women's Shelter of Long Beach)

Where are we going?

- MSA 3 will continue and search for partnerships with the community for our students, staff and families



MAGNOLIA
SCIENCE ACADEMY 4

VENICE

MSA 4 CS Journey

August '22 - September '22 - Introduced the Community School Model to our students, families and community as well hold our 1st Parent Advisory Meeting in September

October '22- November '22 - Conducted our Assets and Needs Survey school wide with students, staff & families participating. We also conducted Focus Groups with our students, families and staff to get a better idea on how to service our community.

December '22- January '23 - Discussing our findings from our Assets and Needs Survey with our team, students and parents. Then outlining a plan of action to address the survey.

February '23- June '23 - Researching and securing beneficial partnerships for our students, staff and families



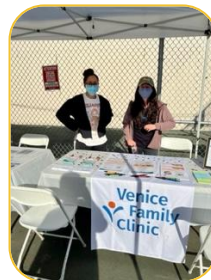
**Community
Resource
Fair/Fall
Festival**



**Baby2Baby/
Family2Family**



**Assmb. Isaac
Bryan district 55,
working with his
amazing team &
letting him know
about MSA 4**





1

Where were the schools before the CCSPP?

25% of families not aware of our workshops offerings
37% of our students not being aware how to access social emotional & mental health services



2

Where are we with the CCSPP model?

Providing student with social emotional services (Plus Me Project)
Working with Venice Family Clinic
Parent College for our parents in providing courses and securing workshops for them



3

Where are we going?

Soaring and growing our school culture and community. Securing meaningful and beneficial partnerships and resources for our students, families and community.



MSA 5's 1st year journey as a Community School

Expanded Learning Time & Opportunities:

- Catalina Island overnight science camp
- UCLA leadership program

Collaborative Leadership & Practices:

- Parent Advisory Committee (PAC)
- Asset & Needs & Assessment

Active Family & Community Engagement:

- Community resource fair
- Community volunteering
- Neighborhood council meetings
- Parent meetings

Integrated Student Support:

- 99 home visits completed
- Free mobile clinic
- Mental health



LOS LOBOS' Display of Community

Key Takeaways

LOS LOBOS' Display of Community



1

Based on data results from surveys conducted with stakeholders:

- 26% of families are unaware of offered workshops focusing on variety of topics. Parent attending workshop conducted by New Economics for Women was connected and assisted regarding immigration services.
- 37% of students don't know who to reach out to on school site for social, health, and mental health services. Student's parent unaware of onsite counseling and was connected to Mitchell Family Counseling.

2

Although we are still in the development stage of our community schools model, we have built a strong team that is dedicated to assisting all the educational partners.

3

To provide students, parents, staff, and community members with deliberate partnerships toward growth and connection to the four pillars of community schools, MSA-5 will continue to build its Community School based on data.



MSA 6 Journey as a CS

TIGERS KEY TAKEAWAYS



OF STAFF FEEL THE SCHOOL COMMUNITY IS ABLE TO ESTABLISH AND MAINTAIN HEALTHY AND REWARDING RELATIONSHIPS.

Data from October 2022 CS Assets & Need Assessment Survey



My school provides opportunities for students to share their voices in student councils, clubs, and leadership programs

Data from October 2022 CS Assets & Need Assessment Survey



Families



Students



Staff

OUR STAFF, STUDENTS, AND FAMILIES BELIEVE THEY HAVE A GOOD OVERALL SCHOOL EXPERIENCE

Data from Spring 2023 Panorama Educational Survey

"While our school is small in numbers our schools show up in mighty ways. Always providing a space for all to feel seen, safe, and welcomed"
-Ms. Mackey

LeaderinMe®

care+solace



think
TOGETHER



HOLLYWOOD-WILSHIRE
WELLNESS
COMMUNITY

LOS ANGELES COUNTY DEPARTMENT OF PUBLIC HEALTH
Fostering Hope - Healing - Purpose

MAGNOLIA PUBLIC SCHOOLS
Connection • Innovation • Excellence

HOME OF THE TIGERS

School Year 2022-2023

01

02

03

04

COLLABORATIVE LEADERSHIP PRACTICES

- Parent Advisory Committee
- Parent Task Force
- Staff
- Focus Groups
 - Students
 - Parents
 - Staff
- Needs Assessments
- Data Walks
- Met with Local Officials
(Assembly member Isaac Bryan: District 55)



EXPANDED LEARNING OPPORTUNITIES

- SEL Program (Leaders In Me)
- Koreatown Public Library Media Lab
- Hollywood-Wilshire Wellness Community Program
 - Physical Class (Zumba)
 - WIC
 - Free Produce Pick Up
 - Support Groups...etc
- Public Health Vaccine clinics
- Baby2Bay
 - Basic Needs items



FAMILY AND COMMUNITY ENGAGEMENT

- Parent Advisory Committee
- Parent Task Force
- Community Resource Fairs
- Multicultural Food Festivals
- Parent Workshops
 - Parent College
 - Volunteering Opportunities
- Increasing Family Involvement with MPS Punch card program



STUDENT SUPPORT

- SEL Learning
- PBIS Assemblies
- Focus Groups
- Field Trip Funding
- Mental Health Support
- After School Clubs
- Tutoring
- Think Together Evening Program
- Saturday School
- Student Led Fun Activities



Collaborative Leadership Practices

- MET Team
- Parent Advisory Council & Parent Task Force
- Staff
- Conducted the Asset & Needs Assessment
- Hosted Focus groups
- Data Walks
- Met with Local Elected Officials

Expanded Learning Opportunities

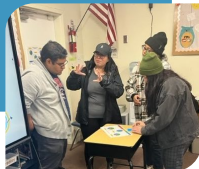
- Strengthen and Solidified 7 Pre Existing Partnerships
- Introduced 17 new Partnerships
- Created MSA7 Community Map (Northridge)
- Chamber of Commerce Connections

Family and Community Engagement

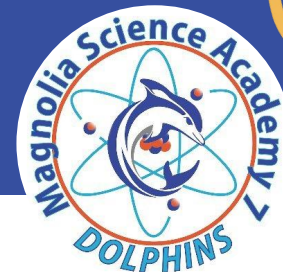
- Parent Advisory Council (PAC)
- Parent Task Force (PTF)
- Coffee with the Admins
- Community Resource Fair
- Family Events (7)
- Parent Meetings (25)
- Monthly Workshops
- Workshop Series
- Increase Family involvement

Student Support

- 3 on Campus Mobile Clinics
- Community Closet/Hub
 - Clothing & Shoes
 - School Supplies
 - Hygienic Goods
 - Diapers
- School wide Assemblies
- Field Trip Funding



MSA 7 Key Takeaways



97% of Staff believe that there is positive dynamics between staff, students and families.



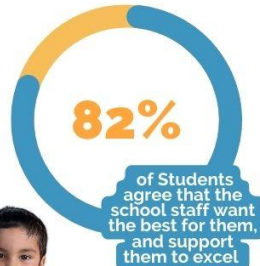
98% of Families state that MSA7 provides a simulating and supportive environment for its students



98% of Families state that staff at MSA7 are caring, responsive, supportive and respectful.



"It is so welcoming to see that staff, knows my child's name and greets them every morning."
-Parent of MSA 7 Student



82% of Students agree that the school staff want the best for them, and support them to excel

1

Students Approval Rating - 73%
Staff Approval Rating - 90%
Family Approval Rating - 99%

2

MSA7 is still working on finalizing its Community School Model, using this year of planning to really take into consideration what ALL of our educational partners really want and need.

3

MSA7 will continue its work on becoming a community hub of resources, that offer a comprehensive approach to student wellbeing inclusive of health, social services, academics, development and more.

MSA 8-Bell Journey as a CS

August 22:
Students, Families, Staff, and Community were introduced for the first time to Community School Model with Community School Coordinator

September - November '22:
Assets and Needs Assessment Surveys along with Focus Groups were conducted to better understand community needs

January '23:
Based on data collected after survey, Needs were determined and a plan was created to accomplish goals for partnerships and programs to meet the needs of our community

February '23
All information were shared with Parents, Staff & Community. Then we focused on programs that will support student, families, staff and include community



MSA 8-Bell Key Takeaways



1

Increasing the offering for parent trainings and involvement. (i.e Over 22 hours of parent training)

2

Where are we with the CCSPP model?

We are improving day by day. Our Enrollment Applications for 2023-24 school year increased comparing with the previous year. Waiting list for 8th graders

3

Where are we going?

**Task Force including Educational Partners
Increasing choice and voice**

Continue to Civic Engagement in our local communities

Weekly newsletter and communication (ie. monthly calendar)

Monthly Student Town Hall Meeting (Led by Students)

More Effective Student Ambassador Programs



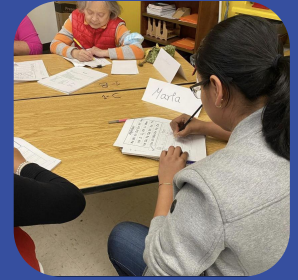
Our Journey as a CS

Take Action Mental Health Day



Community Safety Meeting

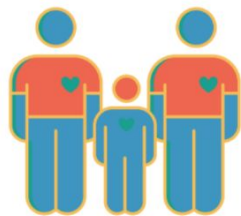
Expanded Learning



MSA-SA Key Takeaways



**Community
Advisory Committee**



Student Quote by:
Anthony Quiterio

I feel there is a good community among the students no matter race or where we come from, we all do our best to support each other. We as students have a strong voice and I believe when we present valid points that are beneficial for the student body, we see the change.

1

Developed over 12 new partnerships that support our community needs and help strengthen our MTSS. We have also establish new relationships with council members and the distinct departments in the city of Santa Ana.

2

Our community schools' model is still in its development phase, but we have grown a strong team that is committed to supporting all the educational partners.

3

We look to further develop the capacity of our CAC and parent leadership and with the continued support from the city of Santa Ana, we will establish a neighborhood association to elevate the voice of our community and school.

Thank You

