



GLOWS, GROWS, & PRIORITIES

*Magnolia Science Academy - 2
2022-2023*



- Growth of Dual Enrollment Program
- Hippocratic Circle with Kaiser Permanente for 40 MS students
- Parent Education Bridge for Student Achievement Foundation (PEBSAF) ELA classes at One Generation
- 24th Street Theatre acting improvisation workshop for Student Ambassadors
- Los Angeles Institute for Restorative Practices (LAIRP) student leadership summit at One Generation and student certification in conflict mediation, restorative practices and community circles; and La Canada Leadership Camp Sponsorship
- Be RAD Studios and equipment purchase - new student-created SEL content launch in partnership with Cal HOPE Grant and JAMS Grant
- Health Screening
- New land acquisition and future plans for building construction
- Music Competitions Accepted: Stanford University Jazz Festival, Reno Jazz Festival, and Essential Ellington Jazz Festival in New York
- LACOE History Day Competition
- Home Office PD support for collaborative learning strategies
- English and Math Monday Morning Weekly department coaching
- LA Regional Science Olympiad
- Math Competitions including: AMC8 for MS, AMC10 /AMC12 AB for HS, Noetic Math Competition for MS, Kangaroo Math Competition for MS, MathCounts CSUN
- 53 Gifted Students (GATE) including 3 new students this year
- 12 hour dally school services (6:30am - 6:30pm) Monday - Friday
- MPS Volleyball tournament high school girls championship winner
- Friday Coffee with the Principal weekly meetings
- Insight Treatment Center partnership
- Care Solace partnership for mental health referrals
- Winter Music Concert Recital
- Catalina Island Volleyball Tournament
- More than 35 parent engagement activities
- Cal HOPE SEL Grant
- Instructional Rounds Collaboration with Home Office
- PBIS Silver Medal from California State
- Launch of KickBoard for PBIS incentives
- PBIS Kickoff Assembly
- LA Metro Free Passes for All Students
- Winter MAP - ELA met/exceed growth target for grades 8-11, nearly met growth target for grades 6-7
- Winter MAP - Math met/exceed growth target for grades 8-11 (except 8th grade)
- All grades attended field trips
- College visits with Think Together
- 120 advanced math students
- Exceed target participation rates for Panorama Stakeholder surveys (families 99%, students 98.6%, staf 100%)
- College Board National Recognition Program - 11th Grade Student (Jaylen Marshall)
- New music program
- Drumline performances at sports games
- Enrollment increase 4 consecutive years (currently 507 students)
- More than 20 clubs
- 133 home visits (87 in-person, 56 virtual) - 26% of all students
- 70% College-Career Indicator Readiness rate for current 12th graders
- 85% 12th graders completed at least 1 college course
- 98% A-G completion rate for current 12th graders
- 55% 12th graders eligible for Golden State Merit Seal diploma
- 47% 12th graders eligible for Advanced Diploma
- 100% 12th grade students on track to graduation
- Saturday School programs for targeted student groups, as well as advanced and enrichment activities
- Winter Intersession, Thanksgiving Intersession, Spring Intersession, Summer Intersession
- Telemundo Student Athlete Spotlight - 2 students (Sam Velez and Ariana Bonilla)
- Congressional Award Program (CAP) - Outdoor Expedition to Malibu Springs, Calico Ghost Town, and upcoming trip to Big Sur
- CIF Sports - 1st year eligible for post-season:
 - State Championship for HS Boys Cross Country & 3rd Place in Los Angeles Division 5 Championships (Sam Velez), 8th Place Overall for Team in Los Angeles City Div V
 - Qualified for playoffs for HS girls volleyball, HS boys soccer, HS boys cross country,

GROWS

- Improve ADA rate (93.36% for first 5 months)
- lower than budgeted
- Encourage more SPED and EL students to take college courses
- Expand ELA related competitions
- Improve teacher attendance rate (LCAP Goal 1) due to medical / illness
- Support 8th Grade students to help meet Spring MAP Math growth goal
- Improve incoming 9th grade enrollment / retention of current 8th graders
- Expand services for growing newcomer EL population
- Expand PD services for new teachers (including for all 4 English teacher)
- More PBIS rewards



PRIORITIES

1

Enrollment

- 530 Students for 2023/24
- Improve incoming 9th grade enrollment / retention of current 8th graders

2

Attendance Chronic Absenteeism

- 95% ADA (each month from March - June 2023, as well as all months in 2023-24)

3

ELL Support

- Expand services for growing newcomer EL population

4

Charter Renewal

- Petition
- Data
- Stakeholder Support

DATA

THIS YEAR, WE'VE ANSWERED **895,006** QUESTIONS!

Aim for 70,000 questions each month!
MARCH

SKILL PROGRESS SUMMARY

11,225
SKILLS MASTERED

17,979
SKILLS PROFICIENT

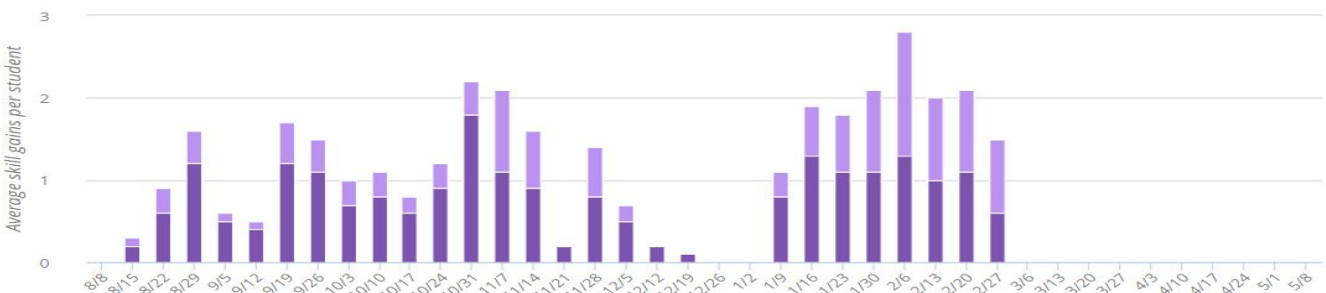
29,989
SKILLS PRACTICED

TIME SPENT



BUILDING MASTERY

Mastered Proficient



Your 4-week average: **2.3 proficient**

IXL's recommended goal: **1** [See strategies >](#)

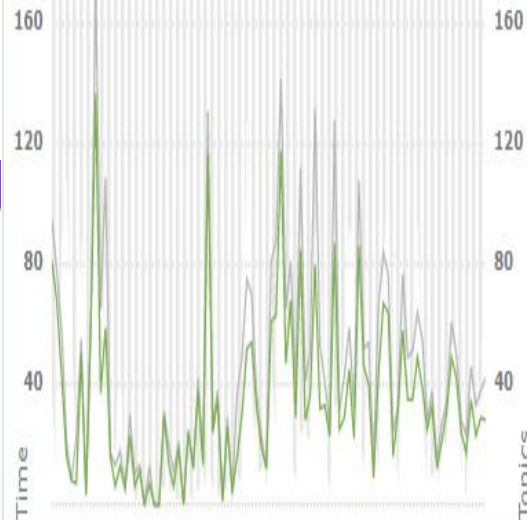
Time & Topic - Learning Mode

3M

1M

2W

1W



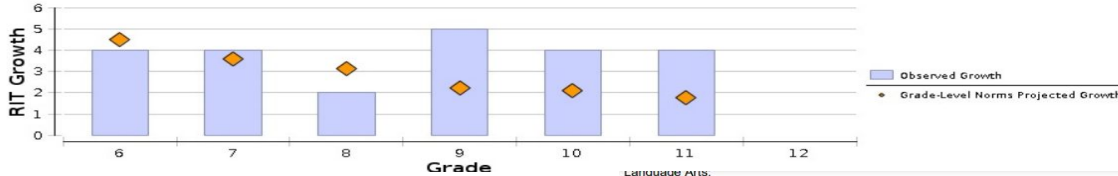
December 3 - March 2

Magnolia Science Academy 2

Math: Math K-12

Grade (Winter 2023)	Total Number of Growth Events†	Fall 2022			Comparison Periods Winter 2023			Growth		Growth Evaluated Against						
		Mean RIT Score	Standard Deviation	Achievement Percentile	Mean RIT Score	Standard Deviation	Achievement Percentile	Observed Growth	Observed Growth SE	Grade-Level Norms			Student Norms			
										Projected School Growth	School Conditional Growth Index	School Conditional Growth Percentile	Number of Students With Growth Projections	Number of Students Who Met Their Growth Projection	Percentage of Students Who Met Growth Projection	Student Median Conditional Growth Percentile
6	99	204.3	14.5	9	208.6	13.9	9	4	0.7	4.5	-0.14	44	99	52	53	51
7	84	209.7	13.6	11	213.3	13.3	11	4	0.8	3.6	0.02	51	84	37	44	42
8	89	216.9	16.4	20	218.7	16.2	17	2	0.7	3.1	-0.97	17	89	39	44	39
9	39	216.9	16.4	17	221.7	15.1	24	5	1.3	2.2	2.32	99	39	27	69	60
10	59	220.9	19.4	21	225.1	18.3	28	4	1.1	2.1	1.82	97	59	33	56	53
11	45	230.4	21.0	45	234.6	21.9	54	4	1.2	1.8	2.12	98	45	27	60	58
12	0	**	**	**	**	**	**	**	**	**	**	**	**	**	**	**

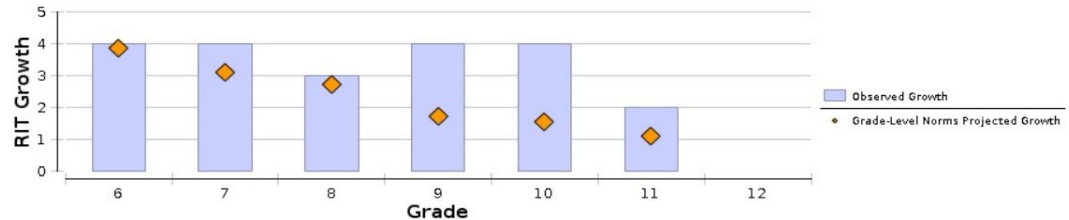
Math: Math K-12



Language Arts:
Reading

Grade (Winter 2023)	Total Number of Growth Events†	Fall 2022			Comparison Periods Winter 2023			Growth		Growth Evaluated Against						
		Mean RIT Score	Standard Deviation	Achievement Percentile	Mean RIT Score	Standard Deviation	Achievement Percentile	Observed Growth	Observed Growth SE	Grade-Level Norms			Student Norms			
										Projected School Growth	School Conditional Growth Index	School Conditional Growth Percentile	Number of Students With Growth Projections	Number of Students Who Met Their Growth Projection	Percentage of Students Who Met Growth Projection	Student Median Conditional Growth Percentile
6	98	204.1	14.1	20	208.0	13.4	20	4	0.9	3.8	0.05	52	98	41	42	41
7	84	206.4	16.2	14	209.9	13.3	16	4	1.0	3.1	0.42	66	84	38	45	45
8	93	210.6	15.8	17	213.3	14.1	18	3	0.7	2.7	-0.02	49	93	40	43	37
9	34	215.3	17.8	35	219.4	14.3	45	4	1.4	1.7	2.10	98	34	19	56	53
10	57	216.9	15.4	30	220.7	14.3	40	4	1.0	1.5	2.40	99	57	34	60	54
11	46	223.9	17.3	52	225.6	15.4	55	2	1.0	1.1	0.48	68	46	23	50	55
12	0	**	**	**	**	**	**	**	**	**	**	**	**	**	**	**

Language Arts: Reading





PARENT AND COMMUNITY RESOURCES

Child Parent Institute Parenting Classes

Mental Health

Social Emotional Learning

Students with Special Needs

LGBTQ+

Food Bank Locator

Guide to pronouns & neo-pronouns

Click on the icons for direct resource!

- Parent Square (Direct parent to staff & student to staff contact)
- Infinite Campus (Platform to overview students grades and attendance)
- Social Media (Communication about school and community events)
- MSA2 Website







MSA2
MAGNOLIA SCIENCE ACADEMY

*Coffee with the principal
Cafecito con el director*



**JOIN US TOMORROW IN PERSON AT 9:15AM BY OUR GARDEN
LES VEMOS MAÑANA EN PERSONA A LAS 9:15AM POR NUESTRO JARDÍN**