



GLOWS, GROWS, & PRIORITIES

2021-2022

Magnolia Science Academy - San Diego

Presented by Gokhan Serce
Principal



Gokhan Serce
Principal



Megan Craig
Dean of Academics



Neil Egasani
Dean of Students



Halil Akdeniz
Dean of Culture

 Magnolia Science Academy - San Diego
Home of the Wizards




MISSION & VISION

Mission:

Magnolia Public Schools provides a safe and nurturing community using a whole-child approach to provide a high-quality, college preparatory STEAM educational experience in an environment that cultivates respect for self and others

Vision:

Graduates of Magnolia Public Schools commit to building a more peaceful and inclusive global society by transforming traditional ideas with creative thinking, effective communication, and the rigor of science.





MAGNOLIA SCIENCE ACADEMY

A CALIFORNIA DISTINGUISHED SCHOOL

HIGHLIGHTS

- Striving to continue to be a California Distinguished School
- Met our Enrollment Target and On track for 2022-23 Enrollment.
- Transitioned to In-person Learning Smoothly



Welcome Back Picnic
Volunteers

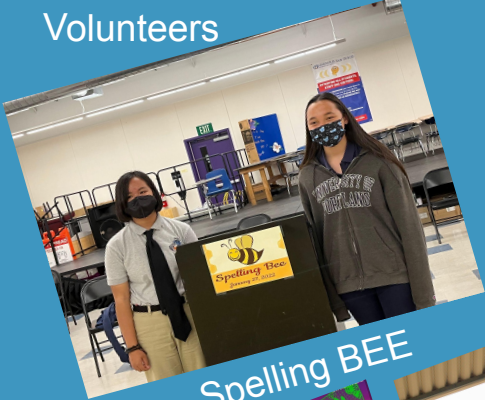


Crochet & Knitting Club



PTF Meeting

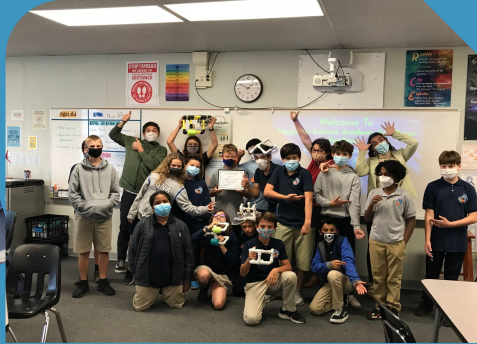
School Culture



Spelling BEE



LatinX Heritage Month



SeaPerch Cal Coast Grant



Pi Day

Bingo Night



Guitar Club

School Culture

Family Thanksgiving Lunch



VEX Robotics



Archery Team



School Tour Q&A

D.O.N.U.T.S. in the Morning
Daily Online News Uncut Through Streaming

MAGNOLIA SCIENCE ACADEMY

LATIF ARSLAN
Good Morning Wizards from room 10 🍌 Happy Women's Day

Respect. Determination.

QUICK THINK

What decisions do you make every day to reach your goals...your destiny?

| Blue | Green | Yellow | Red |
|---|--|--|---|
| | | | |
| SORE SAD TIRED BORING MOVING SLOWLY LONELY | HAPPY CALM GOOD TO GO FOCUSED READY TO LEARN | FRUSTRATED WORRIED SILLY/WHISKEY ADDICTED EXCITED HYPER | MOST ANGRY SHAME MISERABLE / DISAPPOINTED OUT OF CONTROL I NEED YOU AND SPACE |

KNOW YOUR ZONE BECAUSE THAT'S THE WIZARD WAY



Click Here to Watch This Episode

kickboard™

PRINCIPAL OF THE DAY

Anthony Meredith

Words of Wisdom

"Destiny is not a matter of chance, it is a matter of choice." ~ William Bryan

GLOWS



- Had a successful summer school with over 120 students participating.
- Transitioned to in person learning smoothly
- Held data meetings to identify students with achievement gap and providing after school and Saturday School support.
- In addition to formal/informal observations by admin, teachers and teacher leaders do peer observations and provide effective feedback
- Teachers use IAB, MAP, and formative assessment data to inform their instruction
- Students participated in Spelling Bee and AMC8
- All students participated in Celebration of Science and Celebration of Math Events
- 58.2% of students met projection for Math Fall to Winter Growth
- Fall ELA 69% met or exceeded grade level standard
- Projected proficiency from IAB data shows that 64% of students meet or exceed standard in ELA and 72% in Math
- Our Sea Perch Robotics team received a grant from Cal Coast Care Foundation
- We met our Fundraising goal to upgrade our water fountains
- Hosted monthly student assemblies
- We continue to do daily SEL activities in the morning through youtube live broadcast and weekly SEL lessons during SSR.
- Hired Full Time School Psychologist and Increased counseling services for all students.
- Offering student clubs daily
- Sending Weekly Newsletters to all of our stakeholders
- Hosting “Virtual Coffee With Principal Serce” meetings to provide updates and also to answer any parent/student/staff questions.
- Weekly Staff, Local Leadership, Grade Level and Department Meetings. Empowered local teacher leaders to increase staff participation in decision making process.
- Continued to offer parent workshops
- Hosting in person school tours for prospective families
- Archery Team started strong with 1st place in girls and 2nd place in boys at San Diego Conference Championships
- We are on track to meet our home visit goal of 15%.
- Implemented Project Peace- Peer Mediation Program
- Active Use of Kickboard, School-Wide Positive Behavior Intervention System, to recognize students for demonstrating the WIZARD Way!
- 100% of the parents are contactable on Parent Square



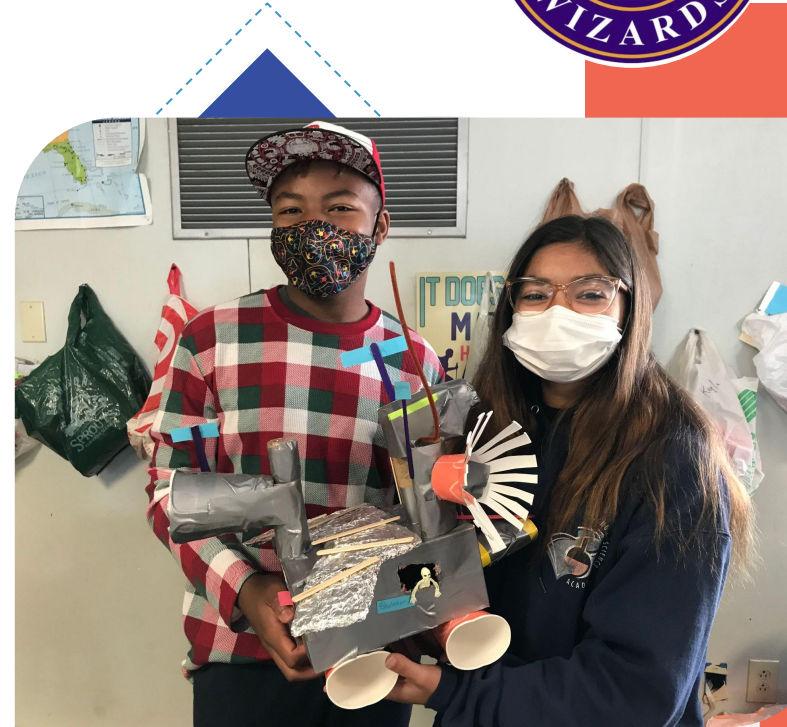
MAGNOLIA SCIENCE ACADEMY
A CALIFORNIA DISTINGUISHED SCHOOL



GROWS



- The number of students participating in after school and Saturday school Support programs are lower than expected.
- Teachers and students missed school due to Covid-19 requirements. This added more barriers for students and staff to address learning loss.
- While the COVID 19 landscape impacted our attendance, our school was able to sustain an ADA rate of over 90%
 - Aug 21 - Dec 21 94%
 - Jan 22 - Mar 22 92%
- Back to School Night, Info Meetings and SLC's are offered virtually to increase participation.
- Some of the school events offered with limited seat capacity to meet the Covid guidelines.
- 6th grade enrollment increased from 124 (2020) to 135 (2021).
- Due to many families moving out of San Diego/State the 7th and 8th grade enrollment decreased during pandemic.
- We fully renovated our student restrooms and also added touchless controls
- Although We couldn't hire our second custodian, we are working with a vendor to get the custodial support.
- SSC, PTF, ELAC Meetings held regularly.



MAGNOLIA SCIENCE ACADEMY
A CALIFORNIA DISTINGUISHED SCHOOL

Celebration of Science

PRIORITIES



- **Student Achievement:** We are providing focused academic support during and after school to address learning loss due to Covid-19.
- **Student Support:** We continue to provide SEL and Mental Health support for staff and students.
- **Staffing:** Due to staff shortages, our Priority has been hiring an Education Specialist, 7th/8th grade PE teacher and an elective teacher.
- **Facilities:** Closing of the school project and the implementation of the Phase 3 is a priority.
- **Enrollment:** We hosted 7 informational meetings and 2 in person school tours. We are on target to meet our enrollment goal for 6th grade.
- **School Events:** Bringing back the school events that were postponed due to COVID

Project Peace- Peer Mediation Leaders



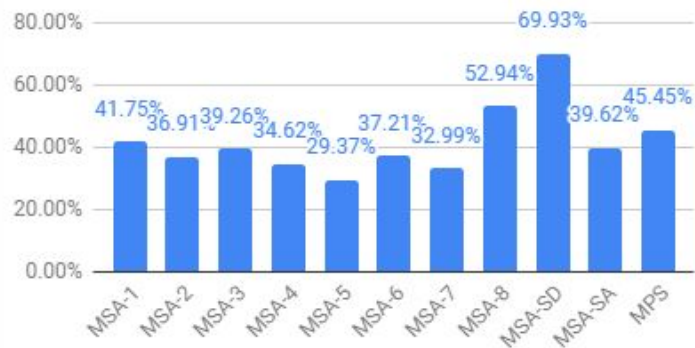
MAGNOLIA SCIENCE ACADEMY
A CALIFORNIA DISTINGUISHED SCHOOL



Data: MAP ELA 21-22



Fall 2021 MAP Reading - Proficiency Projection for 2021-22 SBAC

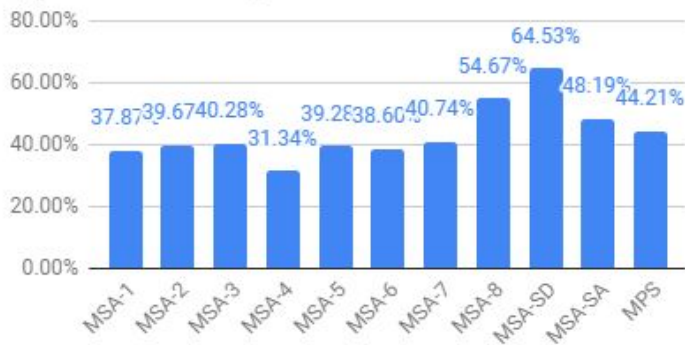


| | 2018-19: (All Students) | 2021-22: (All Students) | Fall 2020 Proficiency Projection for 2020-21 SBAC | MAP Reading - Fall 2021 | | | Exceeded Target by | On Target? |
|--------|----------------------------|----------------------------|---|-------------------------|-----------------------------|--|-----------------------|---------------|
| | Baseline (CAASPP) | Target (CAASPP) | Baseline (MAP Reading) | Student Count | Level 3 and 4 Projection | Level 3 and 4 Projection for 2021-22 SBAC | | |
| MSA-1 | 45.06% | 46.00% | 39.36% | 412 | 172 | 41.75% | -4.25% | P |
| MSA-2 | 41.81% | 44.00% | 40.75% | 317 | 117 | 36.91% | -7.09% | N |
| MSA-3 | 35.67% | 36.00% | 35.51% | 163 | 64 | 39.26% | 3.26% | Y |
| MSA-4 | 27.12% | 35.00% | 34.62% | 26 | 9 | 34.62% | -0.38% | Y |
| MSA-5 | 46.96% | 48.00% | 31.33% | 143 | 42 | 29.37% | -18.63% | N |
| MSA-6 | 46.26% | 48.00% | 37.33% | 86 | 32 | 37.21% | -10.79% | N |
| MSA-7 | 44.54% | 48.00% | 40.23% | 197 | 65 | 32.99% | -15.01% | N |
| MSA-8 | 43.07% | 45.00% | 47.43% | 374 | 198 | 52.94% | 7.94% | Y |
| MSA-SD | 69.31% | 70.00% | 72.32% | 409 | 286 | 69.93% | -0.07% | Y |
| MSA-SA | 34.23% | 35.00% | 44.64% | 313 | 124 | 39.62% | 4.62% | Y |
| MPS | 44.70% | 50.00% | 45.62% | 2,440 | 1,109 | 45.45% | -4.55% | P |

Data: IAB ELA 21-22



IAB ELA - Proficiency Projection for 2021-22 SBAC
(Updt. on 12/20/21)

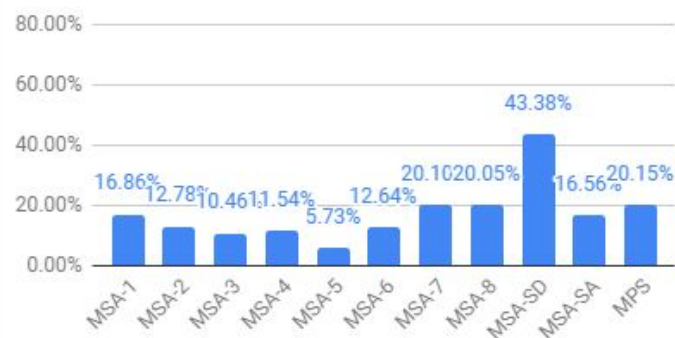


| | 2018-19: (All Students) | 2021-22: (All Students) | IAB ELA Level 3 and 4 Projection (12/20/21) | IAB ELA Level 3 and 4 Projection (4/8/22) | | | | |
|--------|----------------------------|----------------------------|--|--|----------|----------|-----------------------|---------------|
| | Baseline (CAASPP) | Target (CAASPP) | Progress | Progress | Progress | Progress | Exceeded Target by | On Target? |
| MSA-1 | 45.06% | 46.00% | 37.87% | | | | -8.13% | P |
| MSA-2 | 41.81% | 44.00% | 39.67% | | | | -4.33% | P |
| MSA-3 | 35.67% | 36.00% | 40.28% | | | | 4.28% | Y |
| MSA-4 | 27.12% | 35.00% | 31.34% | | | | -3.66% | P |
| MSA-5 | 46.96% | 48.00% | 39.28% | | | | -8.72% | P |
| MSA-6 | 46.26% | 48.00% | 38.60% | | | | -9.40% | P |
| MSA-7 | 44.54% | 48.00% | 40.74% | | | | -7.26% | P |
| MSA-8 | 43.07% | 45.00% | 54.67% | | | | 9.67% | Y |
| MSA-SD | 69.31% | 70.00% | 64.53% | | | | -5.47% | P |
| MSA-SA | 34.23% | 35.00% | 48.19% | | | | 13.19% | Y |
| MPS | 44.70% | 50.00% | 44.21% | | | | -5.79% | P |

Data: MAP Math 21-22



Fall 2021 MAP Mathematics - Proficiency Projection for 2021-22 SBAC

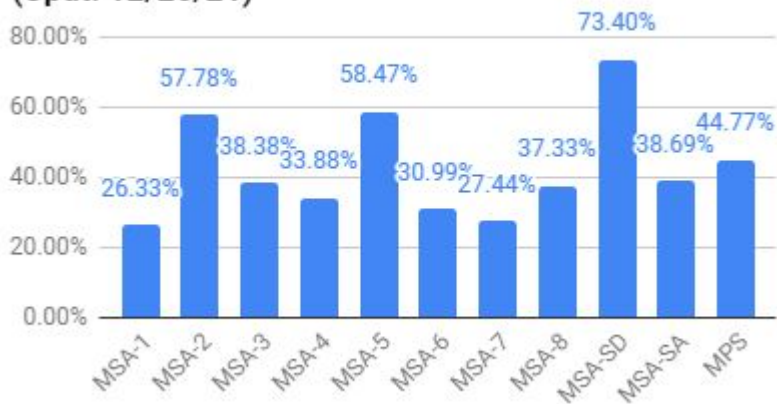


| | Baseline (CAASPP) | Target (CAASPP) | Baseline (MAP Math) | Student Count | Level 3 and 4 Projection | Level 3 and 4 Projection for 2021-22 SBAC | Exceeded Target by | On Target? |
|---------------|-------------------|-----------------|---------------------|---------------|--------------------------|---|--------------------|------------|
| MSA-1 | 30.13% | 31.00% | 18.37% | 427 | 72 | 16.86% | -14.14% | N |
| MSA-2 | 27.87% | 31.00% | 23.47% | 313 | 40 | 12.78% | -18.22% | N |
| MSA-3 | 17.37% | 20.00% | 14.85% | 153 | 16 | 10.46% | -9.54% | N |
| MSA-4 | 8.47% | 11.00% | 8.33% | 26 | 3 | 11.54% | 0.54% | Y |
| MSA-5 | 38.67% | 39.00% | 16.57% | 157 | 9 | 5.73% | -33.27% | N |
| MSA-6 | 38.36% | 39.00% | 15.54% | 87 | 11 | 12.64% | -26.36% | N |
| MSA-7 | 32.14% | 35.00% | 37.43% | 194 | 39 | 20.10% | -14.90% | N |
| MSA-8 | 23.86% | 26.00% | 27.12% | 374 | 75 | 20.05% | -5.95% | N |
| MSA-SD | 60.62% | 61.00% | 52.31% | 408 | 177 | 43.38% | -17.62% | N |
| MSA-SA | 28.61% | 29.00% | 27.19% | 308 | 51 | 16.56% | -12.44% | N |
| MPS | 32.13% | 35.00% | 27.37% | 2,447 | 493 | 20.15% | -14.85% | N |

Data: IAB Math 21-22



IAB Math - Proficiency Projection for 2021-22 SBAC (Updt. 12/20/21)



| | 2018-19: (All Students) Baseline (CAASPP) | 2021-22: (All Students) Target (CAASPP) | IAB Math Level 3 and 4 Projection (12/20/21) Progress | IAB Math Level 3 and 4 Projection (4/8/22) Progress | Progress | Progress | Exceeded Target by | On Target? |
|--------|--|--|---|---|----------|----------|-----------------------|---------------|
| MSA-1 | 30.13% | 31.00% | 26.33% | | | | -4.67% | P |
| MSA-2 | 27.87% | 31.00% | 57.78% | | | | 26.78% | Y |
| MSA-3 | 17.37% | 20.00% | 38.38% | | | | 18.38% | Y |
| MSA-4 | 8.47% | 11.00% | 33.88% | | | | 22.88% | Y |
| MSA-5 | 38.67% | 39.00% | 58.47% | | | | 19.47% | Y |
| MSA-6 | 38.36% | 39.00% | 30.99% | | | | -8.01% | P |
| MSA-7 | 32.14% | 35.00% | 27.44% | | | | -7.56% | P |
| MSA-8 | 23.86% | 26.00% | 37.33% | | | | 11.33% | Y |
| MSA-SD | 60.62% | 61.00% | 73.40% | | | | 12.40% | Y |
| MSA-SA | 28.61% | 29.00% | 38.69% | | | | 9.69% | Y |
| MPS | 32.13% | 35.00% | 44.77% | | | | 9.77% | Y |

Thank You!

 **MAGNOLIA**
SCIENCE ACADEMY | **SAN DIEGO**



LL

