



# **GLOWS, GROWS, & PRIORITIES**

***2021-2022***



# MSA-2 DEMOGRAPHICS



**SPED Students 17.5%**

**Free/Reduced Lunch: 82.8 %**

**EL Students: 14.94%**

**Hispanic/Latino: 89.4**

**GATE Students: 8 %**

**Asian: 4%**

**White: 4%**

**African American: 2%**

**Homeless/FY: 1.2 %**



## MPS Historical Enrollment

|       | 2017-18 | 2018-19 | 2019-20 | 2020-21 | 2021-22 |
|-------|---------|---------|---------|---------|---------|
| MSA-2 | 471     | 437     | 435     | 464     | 502     |

\* Data from CALPADS Fall 1 Certification

# HIGHLIGHTS



Learning Lab  
Intervention

After School Robotics and  
Drone Clubs

Winter Camp &  
Summer School

Advanced Math Program  
114 students

Saturday School

CAP Program

Student-driven  
SEL Support



# COLLEGE PREPAREDNESS



## AP Classes

Computer  
Spanish

## Dual Enrollment


College Counseling 20  
English 101  
History 7  
Communications 101  
Health 11

## Dual Enrollment

College Counseling 20  
English 101  
History 7  
Communications 101  
Health 11

## Special Courses

Senior Seminar  
Financial Algebra  
Digital Art  
Ethnic Studies

- 100% of students have technology devices-Chromebook/Headphones
  - Approximately 40 students attend Saturday School program weekly zoom/in person
  - Over 40 students enroll in college courses
  - Student-driven SEL support (High school mentor SEL support to middle school students)
  - One-on-one mental health support with school psychologist
  - Conducted virtual risk assessments
  - Follow up with PMRT and Department of Mental Health
  - 93.5% average daily attendance over first 4 months
  - Made 56 home visits
  - Weekly lessons during advisory/SSR classes on ZONES of Regulation
  - Utilizes the Edhesive Professional Learning Course for AP Computer Science curriculum.Supporting students in being able to pass the AP exam in May,
  - Thanksgiving CAP Camp
  - Using online programs very efficient
  - Enrollment
  - PBIS Bronze Medal
  - CIF Sports
  - IXL Math and ELA
  - 40 GATE students
- 

- 
- Increase efficiency of after school programs / small groups / clubs / office hours
  - Increase student engagement in learning
  - Decrease students behavior issues following return from distance learning
  - Decrease quantity of students failing courses
  - Increase social-emotional support to students
  - Decrease Teachers Absenteeism-Covid/Close Contact
  - Increase engagement in Independent Study
  - Increase effectiveness of short term Independent Study
  - Improve competitiveness in CIF Sports
  - Obtain private non-LAUSD facility
- 

# PRIORITIES



- Saturday School
- After School Tutoring
- Think Together Collaboration
- ELD/SPED Support
- A+Math Clubs/Competitions
- Friday Coffee With the Principal
- PBIS
- Online Programs
- New Non-LAUSD Private Facilities
- Increase CIF sports facility access & become full CIF member
- Recruit our Alumni for professional opportunities at MSA2
- Build Alumni network to provide career and social emotional support
- Follow-up our Students- College Students (6th - 16th Grade)
- WASC Accreditation
- LACOE Renewal

## PARENT & COMMUNITY ENGAGEMENT

- Parent Technology and Parenting Classes
- School Site Council/ PTF Meetings
- ELAC/ Title 1 Meetings
- Parent-Teacher Conferences

- |                            |                     |
|----------------------------|---------------------|
| ★ ALEKS                    | ★ Google Classroom  |
| ★ IXL                      | ★ Kahoot            |
| ★ MyOn                     | ★ Naviance          |
| ★ Khan Academy             | ★ Gizmo             |
| ★ Quizz                    | ★ Quill             |
| ★ Boardwork                | ★ Standard Plus     |
| ★ McGraw Hill<br>ConnectEd | ★ Genius Generation |
|                            | ★ Edgenuity (I.S.)  |

# MSA-2 ACTIVITIES



## **Student Activities**

ASB Committee

PBIS Events

Day of the Dead Festival

Fall / Halloween Festival

Senior Halloween Event

Senior Car Wash

CAP Camping

Ice Cream Truck Fridays

Student vs Alumni Volleyball Game

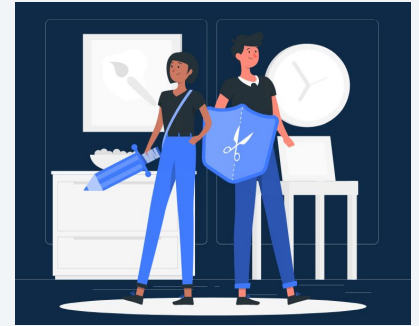
Staff vs Students Sports

Vaccination Event

College Intros

Music Center on Tour

Music Club



## **Staff Activities**

MPS Wide Department Meetings

WASC Focus Group Meetings

Staff Weekly PDs

LACOE PBIS Meetings

Monthly Staff Activity (Karaoke)

## **Parent Activities**

Weekly Coffee with the Principal

English Classes

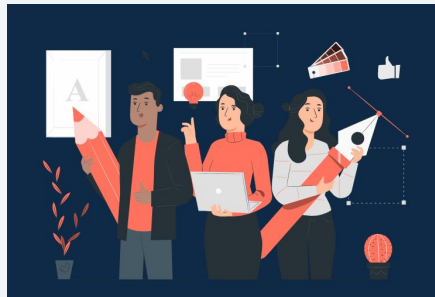
Parent Bridge Education Program

Title I Meetings

ELAC Meetings

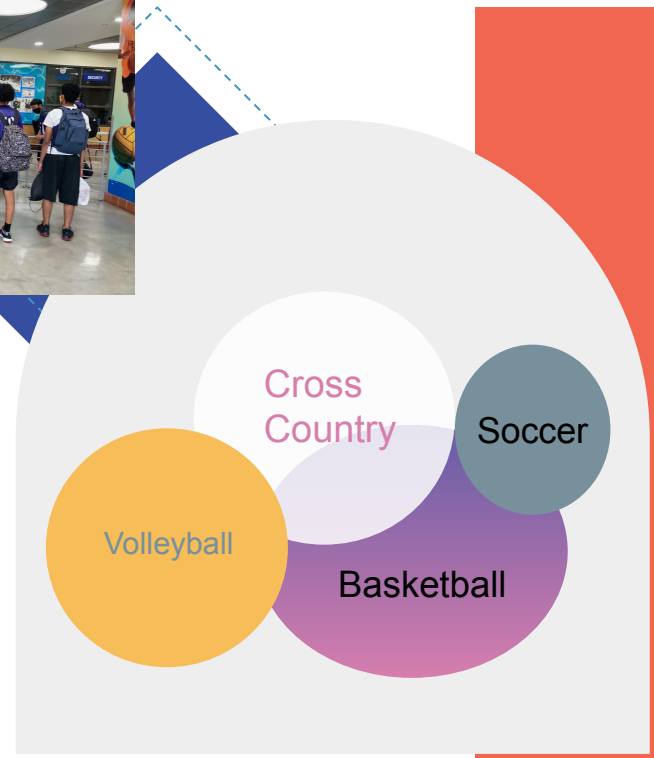
SSC Meetings

College Counselor Workshop for Parents





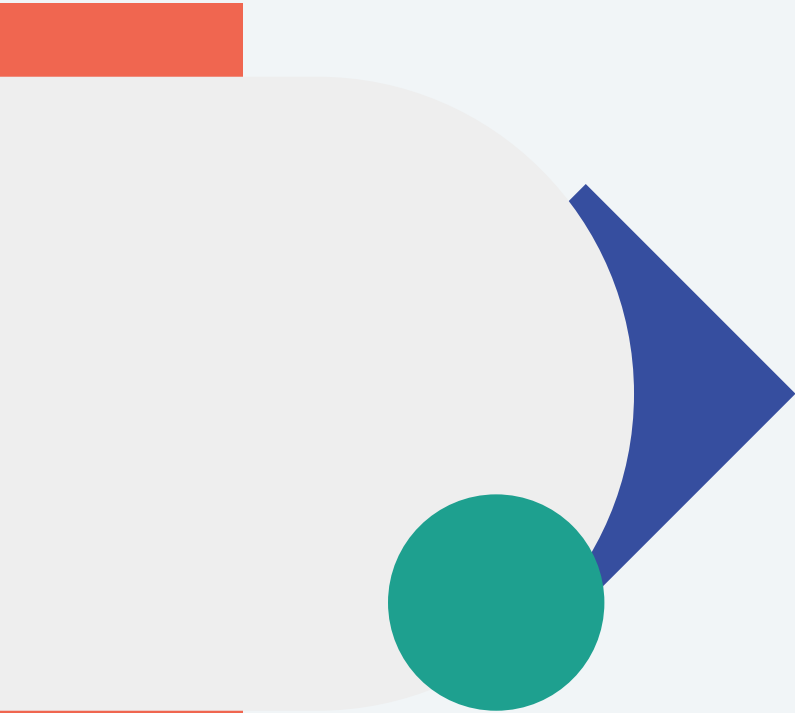
# MSA-2 MUSTANGS - CIF SPORTS



# PBIS



# DATA



# IXL DATA - ELA & MATH



## SCHOOL ACHIEVEMENT

[School achievement summary >](#)

THIS YEAR, WE'VE ANSWERED

**3 8 7, 1 5 8**

QUESTIONS!

NOVEMBER

Goal achieved—way to go!

71,650

### SKILL PROGRESS SUMMARY

**5,851**  
SKILLS MASTERED

**7,909**  
SKILLS PROFICIENT

**14,063**  
SKILLS PRACTICED

### TIME SPENT

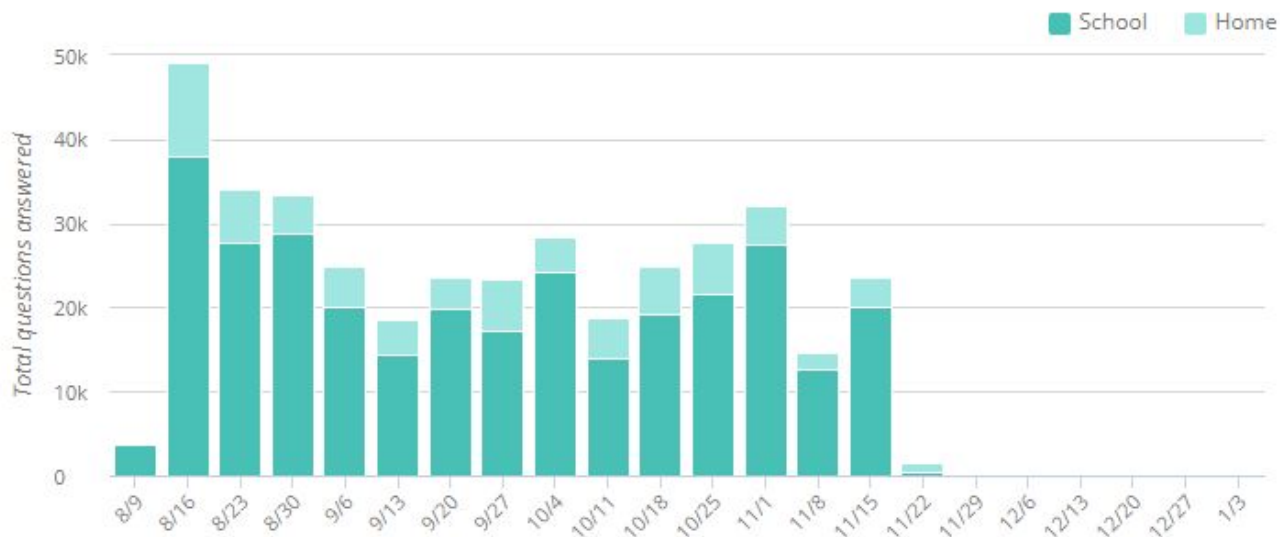
**3,465 hr**  
THIS YEAR

SCHOOL  
 HOME

# IXL DATA - ELA & MATH



## EXTEND STUDENT LEARNING



Your 4-week average: **27% home**



IXL's recommended goal: **10%** [See strategies](#) ▼

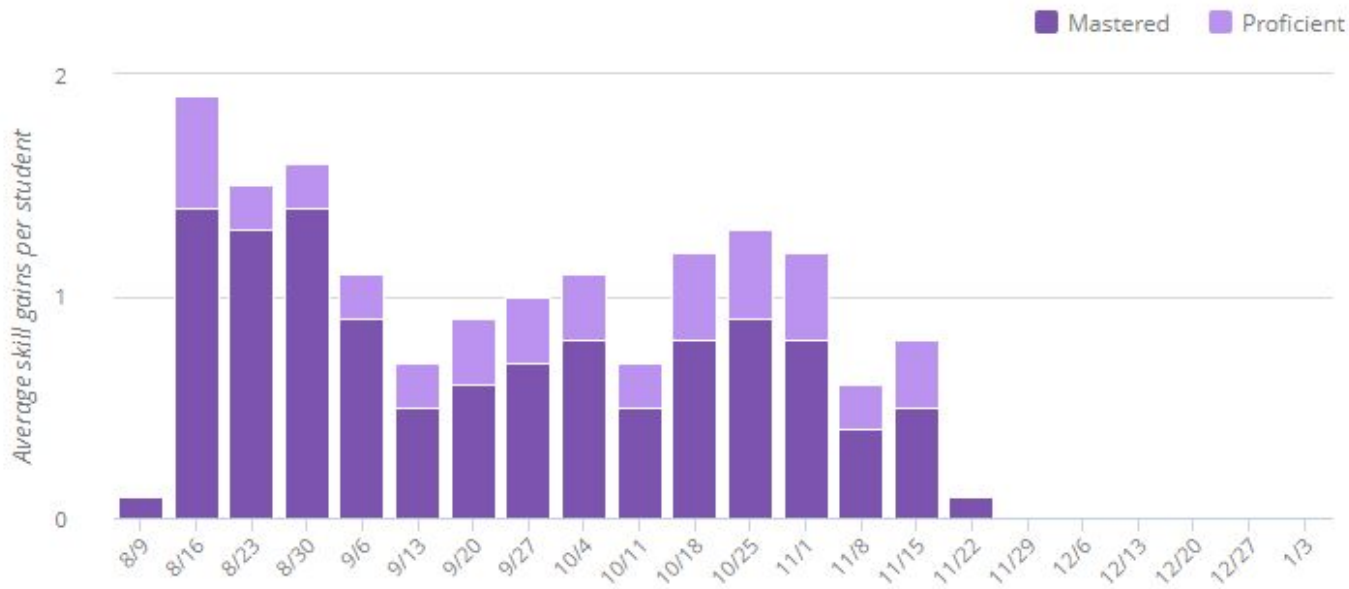
IXL is built for anywhere, anytime learning. We recommend using IXL from both school and home to ensure your students get the most out of their IXL experience.

Collectively this school year, your students have extended their learning time by answering over 73,000 questions from home.

# IXL DATA - ELA & MATH



## BUILDING MASTERY



Your 4-week average: **0.6 proficient**



IXL's recommended goal: 1

[See strategies](#) ▾

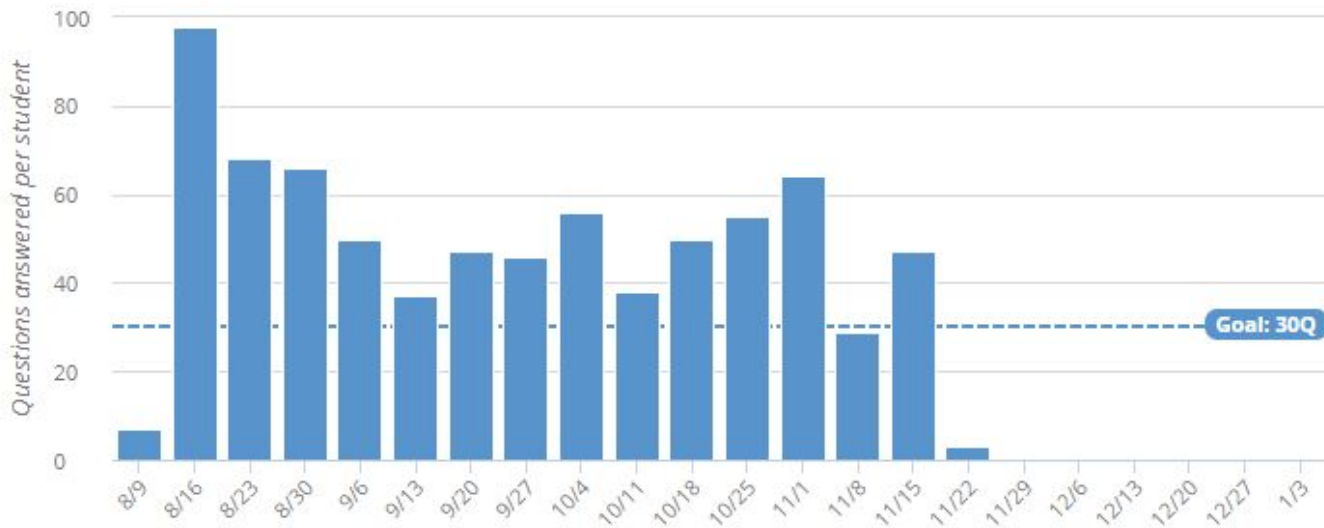
IXL's SmartScore is based on a proprietary algorithm that combines accuracy, consistency, and question difficulty to authentically gauge student mastery of a topic.

Research shows that striving toward mastery (a SmartScore of 100) is the most effective way to drive student growth on state assessments. Mastery isn't the only goal that impacts learning, however. Achieving proficiency (a SmartScore of 80+) has also been proven to lead to improved student outcomes.

# IXL DATA - ELA & MATH



## THE IXL EFFECT



Your 4-week average: **36 questions**



IXL's recommended goal: **30**

[See strategies](#) ▾

Schools across the United States are experiencing the IXL Effect, and you can, too. Research shows that answering at least 30 questions per week has a measurable impact on student outcomes.

Already meeting that goal? Aiming for 60 or 130 questions per week has been shown to have an even bigger impact on student success.

[Learn more](#) about the IXL Effect.

# MSA-2 SBAC GROWTH DATA 2021-22



## English

| 2021 Student Growth Scores - ELA (4-8)                  |                |            |
|---|----------------|------------|
| growthscore   | n_growthscores | decilerank |
| <b>107.1</b>  | 247            | <b>8</b>   |
| English Learners  |                |            |
| growthscore   | n_growthscores | decilerank |
| <b>99.8</b>   | 99             | <b>6</b>   |
| SED: Socioeconomically Disadvantaged                    |                |            |
| growthscore   | n_growthscores | decilerank |
| <b>106.2</b>  | 223            | <b>8</b>   |
| SWD: Students with Disabilities                         |                |            |
| growthscore   | n_growthscores | decilerank |
| <b>88.0</b>   | 43             | <b>4</b>   |
| RFP: Reclassified Fluent English Proficient (RFEP) Only |                |            |
| growthscore   | n_growthscores | decilerank |
| <b>103.9</b>  | 64             | <b>6</b>   |

## Math

| 2021 Student Growth Scores - Math (4-8)                 |                |            |
|---|----------------|------------|
| growthscore   | n_growthscores | decilerank |
| <b>117.1</b>  | 247            | <b>9</b>   |
| English Learners  |                |            |
| growthscore   | n_growthscores | decilerank |
| <b>107.6</b>  | 99             | <b>7</b>   |
| SED: Socioeconomically Disadvantaged                    |                |            |
| growthscore   | n_growthscores | decilerank |
| <b>111.7</b>  | 223            | <b>9</b>   |
| SWD: Students with Disabilities                         |                |            |
| growthscore   | n_growthscores | decilerank |
| <b>98.1</b>   | 43             | <b>6</b>   |
| RFP: Reclassified Fluent English Proficient (RFEP) Only |                |            |
| growthscore   | n_growthscores | decilerank |
| <b>105.5</b>  | 64             | <b>6</b>   |



# MSA-2 DATA 2021-22



| AP FIVE-YEAR SCHOOL SCORE SUMMARY |                                       |       |       |       |       |        |
|-----------------------------------|---------------------------------------|-------|-------|-------|-------|--------|
|                                   |                                       |       |       |       |       |        |
| MSA-2                             | Total AP Students                     | 45    | 43    | 54    | 49    | 24     |
|                                   | Number of Exams                       | 71    | 89    | 71    | 66    | 26     |
|                                   | AP Students with Scores 3+            | 21    | 19    | 24    | 30    | 11     |
|                                   | % of Total AP Students with Scores 3+ | 46.7% | 44.2% | 44.4% | 61.2% | 45.83% |

| 2020-21 FOUR-YEAR ADJUSTED COHORT GRADUATION RATE |                 |                              |                        |                                       |  |  |   |   |  |
|---|-----------------|------------------------------|------------------------|---------------------------------------|--|--|---|---|--|
|   | Cohort Students | Regular HS Diploma Graduates | Cohort Graduation Rate | Graduates Meeting UC/CSU Requirements | % of Graduates Meeting UC/CSU Requirements | Graduates Earning a Seal of Biliteracy | % of Graduates Earning a Seal of Biliteracy | Graduates Earning a Golden State Seal Merit Diploma | % of Graduates Earning a Golden State Seal Merit Diploma |
| MSA-2   | 42              | 39                           | 92.9 %                 | 36                                    | 92.3                                       | 12                                     | 30.8%                                       | 13  | 33.3%  |

| 2020-21 FOUR-YEAR ADJUSTED COHORT OUTCOME |                 |                              |                  |                              |   |                |                 |                |          |                     |
|---|-----------------|------------------------------|------------------|------------------------------|---|----------------|-----------------|----------------|----------|---------------------|
|   | Cohort Students | Regular HS Diploma Graduates | CHSPE Completers | Adult Education H.S. Diploma | Special Education Certificate of Completion | GED Completers | Other Transfers | Still Enrolled | Dropouts | Cohort Dropout Rate |
| MSA-2                                     | 42              | 39                           | 1                | 0                            | 0   | 0              | 0               | 2              | 0        | 0.0%                |

# MSA-2 NWEA MAP DATA 2021-22



| This data shows how many students met their growth targets from fall to spring. |                |                       |                      |                        |             |  |  |                | Math                  | Reading              |                        |             |
|---|----------------|-----------------------|----------------------|------------------------|-------------|--|--|----------------|-----------------------|----------------------|------------------------|-------------|
|   |                |                       |                      |                        |             |  |  | MSA2           | 67.4%                 | 65.0%                |                        |             |
| MSA2  | Math           |                       |                      |                        |             |  |  | MSA2           | Reading               |                      |                        |             |
|   | Grade          | Count with projection | Count met projection | Percent met projection | CGI         |  |  | Grade          | Count with projection | Count met projection | Percent met projection | CGI         |
|   | 6              | 95                    | 53                   |                        | 0.83        |  |  | 6              | 87                    | 59                   |                        | 1.88        |
|   | 7              | 86                    | 56                   |                        | 2.62        |  |  | 7              | 79                    | 48                   |                        | 1.45        |
|   | 8              | 79                    | 57                   |                        | 1.59        |  |  | 8              | 79                    | 53                   |                        | 1.82        |
|   | 9              | 44                    | 33                   |                        | 2.23        |  |  | 9              | 41                    | 26                   |                        | 1.25        |
|   | 10             | 44                    | 28                   |                        | 3.09        |  |  | 10             | 42                    | 27                   |                        | 2.49        |
|   | 11             | 41                    | 35                   |                        | 3.27        |  |  | 11             | 38                    | 25                   |                        | 1.79        |
|   | <b>Overall</b> | <b>389</b>            | <b>262</b>           | <b>67.4%</b>           | <b>2.05</b> |  |  | <b>Overall</b> | <b>366</b>            | <b>238</b>           | <b>65.0%</b>           | <b>1.76</b> |
|   |                |                       |                      | CG%ile:                | 98          |  |  |                |                       |                      | CG%ile:                | 96          |

| Student Growth Summary       |      |        |         |
|------------------------------|------|--------|---------|
| Fall 2020-21 to Fall 2021-22 |      |        |         |
| School Wide                  |      | Math   | Reading |
|                              | MSA2 | 33.40% | 46.30%  |

# MSA-2 NWEA MAP DATA 2021-22



| <b>Math - Proficiency</b>    |               |         |        |         |        |             |        |
|------------------------------|---------------|---------|--------|---------|--------|-------------|--------|
|                              | Student Count | Level 3 |        | Level 4 |        | Level 3 & 4 |        |
| MSA2-Spring 21               | 317           | 64      | 20.19% | 39      | 12.30% | 103         | 32.49% |
| MSA2-Fall 21                 | 313           | 28      | 8.95%  | 12      | 3.83%  | 40          | 12.78% |
|                              |               |         |        |         |        |             |        |
| <b>Reading - Proficiency</b> |               |         |        |         |        |             |        |
|                              | Student Count | Level 3 |        | Level 4 |        | Level 3 & 4 |        |
| MSA2-Spring 21               | 314           | 123     | 39.17% | 33      | 10.51% | 156         | 49.68% |
| MSA2-Fall 21                 | 317           | 95      | 29.97% | 22      | 6.94%  | 117         | 36.91% |

# MSA-2 IAB DATA 2021-22



IAB Math Export

53.52%

Column Order ?

41 empty rows Display value as

Organization Assessment Grade Assessment Academic Year Subgroup ← →

Show Hide Percent Number

| Organization                             | Assessment Grade | Assessment                         | Academic Year | Subgroup | Students Tested | Achievement Comparison | Average Scale Score ± Error Band | Below Standard | Near Standard | Above Standard |
|--|------------------|------------------------------------|---------------|----------|-----------------|------------------------|----------------------------------|----------------|---------------|----------------|
| <span>District</span> Magnolia Scienc... | 11               | High School MATH - Solve Equati... | 2021-22       | Overall  | 37              |                        | 2623 ± 24                        | 2%             | 67%           | 29%            |
|  |                  | High School MATH - Algebra and ... | 2021-22       | Overall  | 60              |                        | 2673 ± 14                        | 5%             | 50%           | 45%            |
|  | 7                | Grade 7 MATH - The Number Sys...   | 2021-22       | Overall  | 91              |                        | 2581 ± 11                        | 16%            | 56%           | 27%            |
|  | 11               | High School MATH - Seeing Struc... | 2021-22       | Overall  | 48              |                        | 2656 ± 17                        | 20%            | 47%           | 31%            |
|  | 8                | Grade 8 MATH - The Number Sys...   | 2021-22       | Overall  | 84              |                        | 2624 ± 17                        | 23%            | 27%           | 48%            |
|  | 6                | Grade 6 MATH - The Number Sys...   | 2021-22       | Overall  | 71              |                        | 2464 ± 10                        | 61%            | 36%           | 1%             |

IAB ELA Export

30.82%

Column Order ?

52 empty rows Display value as

Organization Assessment Grade Assessment Academic Year Subgroup ← →

Show Hide Percent Number

| Organization                             | Assessment Grade | Assessment                           | Academic Year | Subgroup | Students Tested | Achievement Comparison | Average Scale Score ± Error Band | Below Standard | Near Standard | Above Standard |
|--|------------------|--------------------------------------|---------------|----------|-----------------|------------------------|----------------------------------|----------------|---------------|----------------|
| <span>District</span> Magnolia Scienc... | 11               | High School ELA - Read Literary ...  | 2021-22       | Overall  | 42              |                        | 2585 ± 14                        | 16%            | 61%           | 21%            |
|  |                  | High School ELA - Listen/Interpr...  | 2021-22       | Overall  | 47              |                        | 2556 ± 19                        | 36%            | 44%           | 19%            |
|  | 6                | Grade 6 ELA - Read Literary Text...  | 2021-22       | Overall  | 77              |                        | 2479 ± 12                        | 38%            | 50%           | 10%            |
|  | 7                | Grade 7 ELA - Read Literary Texts... | 2021-22       | Overall  | 99              |                        | 2488 ± 10                        | 47%            | 40%           | 12%            |
|  | 11               | High School ELA - Revision (IAB)     | 2021-22       | Overall  | 56              |                        | 2476 ± 15                        | 60%            | 35%           | 3%             |