



Ad Hoc Committee Agenda Item #:	Action Item III.F.
Date:	June 3, 2019
To:	Magnolia Educational & Research Foundation dba Magnolia Public Schools (“ MPS ”) Ad Hoc Committee (the “ Committee ”)
From:	Alfredo Rubalcava, CEO & Superintendent
Staff Leads:	Patrick Ontiveros, General Counsel & Director of Facilities Mustafa Sahin, MSA-1 Principal
RE:	MSA-1 – Dry Erase Paint Change Order Request

I. Proposed Recommendation(s)

Staff recommends and moves that the Ad Hoc Committee approve Oltmans’s change order request for the application of a dry erase paint to certain specified walls in the new construction project at 18220 Sherman Way for the benefit of MSA-1 (the “**Project**”).

II. Background

At the April 11, 2019 Meeting of the Board of Directors of MPS (the “**Board**”), the Board granted to the Ad Hoc Committee the authority to approve change order requests submitted for the Project.

Dry erase paint is a commonly used application in schools that substitutes for traditional white boards. It provides a larger surface on which to write. In the alternative, MSA-1 would have to purchase dry erase boards for every surface proposed to be painted with dry erase paint (both classrooms and offices). Assuming 3 whiteboards per classroom (each 4’ x 8’) and 20 classrooms and 1 whiteboard per office and 7 offices and a cost of approximately **\$330** per whiteboard, using whiteboards would be about **\$29,203** with taxes. A sample of 4’ x8’ whiteboards is attached as Exhibit A.

MSA-1 Oltmans has submitted PCI (aka a change order request) 030 for approval to provide dry erase paint in each classroom covering one entire wall and in each office covering one entire wall. See attachment A. The cost for PCI 030 is **\$20,906**. It would therefore be less expensive to use dry erase paint.

Two alternatives were presented—one using the Monochem Dry Erase product and one using the Rust-Oleum product. While the Rust-Oleum product is less expensive, it is also deemed to be an inferior product. It does not have the longevity of the Monochem product. Moreover, the Monochem product comes with a 10 year warranty while the Rust-Oleum product does not come with any warranty.



III. Budget Impacts

The Project budget carries a line item of **\$325,000** for start-up costs, including FF&E. As reported under a separate board item the total bid amount for FF&E is **\$216,000**. The difference of **\$109,000** would allow for the payment of the cost for the dry erase paint without dipping into the Project budget contingency. A savings of **\$88,094** should be realized that would be added to the Project's contingency which, with the approval of change orders 6 and 7, would then amount to a total of **\$349,056**.

Exhibits (attachments):

- A. White Board Samples
- B. PCI 030



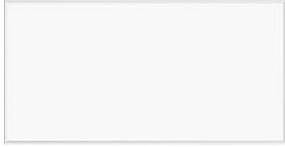

Exhibit A

White Board Samples

See Following Pages

Product Comparison

Remove all  Share

<div style="text-align: right; font-size: small;">x</div>  <p>Sparco Aluminum Frame Dry-Erase Board, 96" x 48" Item # 350495</p> <p>\$329.99 each</p> <p>Add to Cart</p>	<div style="text-align: right; font-size: small;">x</div>  <p>Quartet® Infinity™ Magnetic White Glass Frameless Dry-Erase Board, 96" x 48" Item # 191099</p> <p>\$707.29 each</p> <p>Add to Cart</p>
<p>Rating</p> <p>★★★★★ (2 Reviews)</p>	<p>★★★★★ (1 Reviews)</p>
<div style="background-color: #0056b3; color: white; padding: 2px; font-weight: bold; writing-mode: vertical-rl; transform: rotate(180deg);">Feedback</div> <p>Price</p> <p>\$329.99 each</p>	<p>\$707.29 each</p>
<p>Color</p> <p>Silver</p>	<p>White</p>
<p>Color (Board)</p> <p>White</p>	<p>White</p>
<p>Board Material</p> <p>Melamine</p>	<p>Glass</p>
<p>Material (Frame)</p> <p>Aluminum</p>	<p>---</p>
<p>Mounting Hardware Included</p> <p>Yes</p>	<p>Yes</p>
<p>Recommended Board Use</p> <p>Meeting/Conference Room; Classroom; Office</p>	<p>Meeting/Conference Room; Classroom; Office</p>
<p>Shape</p> <p>Rectangular</p>	<p>Rectangular</p>

Width 48 In.	48 In.
Height 96 In.	96 In.
Material Family Plastic	Glass
Brand Name Sparco	Quartet
Dimensions 96 In. X 48 In.	96 In. X 48 In.
Manufacturer SPARCO PRODUCTS	ACCO BRANDS CORP
Product Type Framed Dry-Erase Board	Framed Dry-Erase Board
Quantity 1	1
Size 96 In. X 48 In.	96 In. X 48 In.
Type 3 96" (8 Ft) Width X 48" (4 Ft) Height - White Styrene Surface - Silver Aluminum Frame - Rectangle - Wall Mount - 1 Each	96" (8 Ft) Width X 48" (4 Ft) Height - White Tempered Glass Surface - White Frame - Horizontal/Vertical - 1 / Each
Board Surface Material Styrene	Tempered Glass
Assembly Required No	No
Type 1 Lorell Aluminum Frame Dry-Erase Board - 96" (8 Ft) Width X 48" (4 Ft) Height - White Styrene Surface - Silver Aluminum Frame - Rectangle - Wall Mount - 1 Each	Quartet Infinity® Glass Magnetic Dry-Erase Board, 8' X 4', White Surface, Frameless - 96" (8 Ft) Width X 48" (4 Ft) Height - White Tempered Glass Surface - White Frame - Horizontal/Vertical - 1 / Each
Type 0 Dry-Erase Board, 8'X4', Aluminum Frame	Glass Marker Board, Infinity, Frameless, 8"X4", White
Type 2 Lorell Aluminum Frame Dry-Erase Board	Quartet Infinity® Glass Magnetic Dry-Erase Board, 8' X 4', White Surface, Frameless
Product Name Aluminum Frame Dry-Erase Board	Infinity Magnetic Glass Marker Board

Use Frequency ---	Heavy Use
Product Line ---	Magnetic White Glass Frameless Dry Erase Boards
Primary Material ---	Glass
Mounting Hardware Type ---	Pass-Through
Limited Warranty ---	Lifetime
Magnetic ---	Yes



Exhibit B

PCI 030

See Following Pages

TITLE: Dry Erase Paint Add at Classrooms & Offices

DATE: 04/19/2019

PROJECT: Magnolia Science Academy

PROJECT NO.: 18049

TO: Patrick Anton Ontiveros
Magnolia Educational and Research Foundation
250 E. 1st St., 1500
Los Angeles, CA

We respectfully request your approval of the following change to the original scope of work:

DESCRIPTION:

This Potential Change Item (PCI) tracks costs associated with the added labor, materials, and equipment required to furnish and install Monochem dry erase per sketches SK018A-C issued at submittal review.

Two options provided (this PCI includes option 1) Options described and breakdown provided on back up:

1. Option #1 per sketches SK018A-R,SK018B-R and SK018C-R includes prep, prime and finish walls (2) two coats of Monochem Dry Erase tinted to DEW341 Swiss Coffee gloss at all specified locations per SK18A to C-R. It includes credit for paint no longer needed if Monochem dry erase paint is used.

*Moch-up out of sequence - \$650 add not included in price.

2. Option #2 VE option to be applied at locations called out on SK018A-R,SK018B-R and SK018C-R includes prep, prime and finish walls (2) two coats of Rust-Oleum write on clear over swiss coffee painted walls in lieu of Monochem Dry Erase. This product is NOT an equal to Monochem.

*Moch-up out of sequence - \$650 add not included in price.

Note: The dry erase scope was not part of original contract documents.

This PCI excludes: any items not identified above including moch-up out of sequence, future or design impact and changes caused by City review or inspections.

Vendor	Description	Amount
JFP Company	Paint & Wallcovering (Option 1)	19,305.00
	Bond	158.00
	SUBTOTAL:	19,463.00
	Fee	987.00
	GL	188.00
	Gross Tax	26.00
	SDI	242.00
TOTAL COST FOR THIS CHANGE ORDER REQUEST:		20,906.00

APPROVAL:
Oltmans Construction Co.

BY: Trevor Lawton
DATE:

APPROVAL:
Magnolia Educational and Research

BY: Patrick Anton Ontiveros
DATE:

Estimate Summary Magnolia Science Academy

Dry Erase Paint

PCI No. 030

Provide labor materials and equipment as required to perform the following changes:

See Oltmans COR cover sheet for description of scope of work

DRY ERASE PAINT ADDED SCOPE (Option #1)

DRY ERASE PAINT ADDED SCOPE (Option #2 VE OPTION)

Description	Totals	Notes
Dry Erase Paint (Monochem)	\$22,520	Per Sketch 18A-18B & Submittals. Monochem dry erase finish tinted to DEW 341 Swiss coffee. (approx \$1.50 sf)
Credit for latex paint - base contract	(\$3,215)	Credit for original base contract; latex finish paint at the dry erase walls.
Subtotal	\$19,305	
SDI	\$242	
Liability Insurance	\$188	
Bond	\$158	
OH & P	\$987	
Tax	\$26	
TOTAL	\$20,906	

Description	Totals	Notes
Restolium Dryerase (VE)	\$16,445	VE option: Rust-Oleam write on clear over swiss coffee painted walls in lieu of Monochem Dry Erase. Restolium comes in clear and white. If clear, walls would be painted therefore no credit of base contract will be issued.
Credit	\$0	<i>This product is NOT an equal to Monochem.</i> <i>This product is clear, walls would be painted therefore no credit of base contract will be issued.</i>
Subtotal	\$16,445	
SDI	\$206	
Liability Insurance	\$160	
Bond	\$136	
OH & P	\$841	
Tax	\$22	
TOTAL	\$17,809	

QUALIFICATIONS:

EXCLUSIONS:

*Moch-up out of sequence - \$650 add not included in price.



TO: Oltmans Construction
10005 Mission Mill Road
Whittier, CA 90601

DATE: 4/23/2019

ATTN: Elizabeth Lara
E-MAIL: elizabethl@oltmans.com
PH: (562) 948-4242 EXT 3432

PROJECT: Magnolia Science Academy
18220 W. Sherman Way
Reseda, CA 91335

Cal. State License No. 457639

CHANGE ORDER REQUEST #1

Additional Items:

OPTION 1:

1. Prep, prime and finish walls by applying two coats of Monochem Dry Erase Finish tinted to DEW341 Swiss Coffee Gloss at all specified locations per revised finish sketches dated 3/15.19.

**MATERIALS: \$10,135.00
LABOR/OH: \$12,385.00**

2. Credit to original contract for interior latex finish paint at Dry Erase walls.

DEDUCT: (\$3,215.00)

TOTAL OPTION 1 \$19,305.00

OPTION 2:

1. Apply two coats of Rust-Oleum Write-On Clear over Swiss Coffee Painted Walls in lieu of Monochem Dry Erase.

**MATERIALS: \$6,578.00
LABOR/OH: \$9,867.00**

TOTAL OPTION 2: \$16,445.00

Submitted by: Chris Pennington

Approved by:

Date:

JFP will not proceed with this scope of work without written authorization, nor be responsible for any delay in the completion of the project resulting from the failure to timely authorize this scope of work in writing and on the approved form for billing.

The work set forth above shall be subject to all of the terms and conditions of the contract. This price submitted to perform the work described herein includes the direct cost of labor, material and equipment necessary to perform the work plus markup. The price does not include amounts for unforeseen and currently unexpected delays, interferences and disruptions to the original contract work caused by this additional work. JFP reserves the right to seek additional compensation for the costs of those delays, interferences and disruptions, if any, at a later date.

MONOCHEM

TECHNICAL BULLETIN

DRY ERASE®



2-Component, Water Base, Aliphatic Polyurethane

MADE IN U.S.A.

PRODUCT DESCRIPTION:

MONOCHEM DRY ERASE is 2-component aliphatic polyurethane that creates a dry erase environment for interior or exterior surfaces. It allows you to convert almost any surface into a high performance erasable canvas. It is a GREEN/universally compliant coating that is USDA approved and has zero HAP's. **DRY ERASE** is available in a gloss, clear or can be pigmented to any color.

BASIC USES:

MONOCHEM DRY ERASE is ideal for most drywall, Masonite, wood, concrete, cement and prepared metal surfaces. It is highly recommended for a variety of settings like schools (old chalkboards, whiteboards or walls), offices, warehouse, cafeterias, gymnasiums, homes, etc.

ADVANTAGES:

- Universally Compliant
- Low Odor/ Zero HAP'S
- Very Low VOC, USDA Compliant
- Superior Cleanability and Stain Resistance
- Top Tier Chemical Resistance
- Outstanding Hardness, Durability and Abrasion Resistance
- Can be pigmented to any color.
- Ideal for schools, offices, warehouses, cafeterias, gymnasiums, homes, etc.

Product Qualifications	
Cal Green	Yes
OTC (Industrial Maintenance)	Yes
SCAQMD (Industrial Maintenance)	Yes
CARB (Industrial Maintenance)	Yes
LEED (New Construction)	Yes
LEED (New Schools / CHPS)	Yes

SURFACE PREPARATION:

Concrete, Masonry, Drywall, Plaster, Cement Materials, Etc.:
All Surfaces must be dry (<15% moisture) and cured for a minimum of 28 days. All adhesion affecting contaminants like dust, dirt, grease, oils, efflorescence, release agents, curing compounds, etc. must be completely removed prior to product application. All cracks and holes larger than 1/16" need to be patched with a paintable filler prior to product application.

*Drywall Surfaces: Must be previously painted or have a PVA primer (ex. **AQUAPRIME**) applied. Recommended only for drywall surfaces Level 4 and above.

TECHNICAL DATA:

Composition.....	2 Component Aliphatic Polyurethane
Solids by Weight (ASTM D2396)	55% ±2
Solids by Volume (ASTM D2697).....	54% ±2
VOC Level.....	< 10 g/L
Viscosity (Mixed, Part A & Part B)	90 KU
Film Appearance, Gloss @60° Gloss (ASTM D523)	94-96°
Color.....	Clear (5670) and White (5660)
Coverage (Approximately).....	175-275 sq/ft/gallon @4-6, Wet Mills, 2-3 Dry Mills
Warranty.....	10 Years
Scrub Resistance (ASTM D2486)	7,500+

Glossy Surfaces & Wood (Glazed Tiles, Plastics, Metal, Porcelain, Formica, Fiberglass: These surfaces must be sanded smooth and primed with **MONOBOND** (can be pigmented to lighter colors) or **MONOCHEM 21** ("stick to anything primer"). **MONOCHEM 21** has an amber hue to it. If this is an issue, just pigment the **MONOCHEM DRY ERASE** to any desired color to hide this effect. Conduct a thorough adhesion test prior to application.

Painted Surfaces: Allow all latex base color coats to dry for 24 hours minimum before topcoating. Existing 2-component coatings (ex. epoxies, polyurethanes, etc.) may require abrasion or priming with **MONOCHEM 21** prior to product application.

Metals: Non-Corrosive Metals (Galvanized, Aluminum, Stainless Steel, etc.): Remove all oils or films with a neutral detergent or emulsion cleaner. Blast lightly with fine abrasives or conduct a light etching. Then rinse using a Zinc treatment and coat within 3 hours to avoid oxidation.

Corrosive Metals: Remove all the loose rust, dirt, grease or other contaminants by one of the following depending on the degree of cleanliness required. Blast SSOC-SP3; SSPC-SP2; SSPC-SP6; SSPC-SP7. Blast lightly with fine abrasives or conduct a light etching. Then rinse using a zinc treatment and apply a rust inhibitive primer prior to **MONOCHEM DRY ERASE**.

Warning: Removal of old paint by sanding, scraping or other means may generate dust or fumes that contain lead. Exposure to lead dust or fumes may cause brain damage or other adverse health effects, especially in children or pregnant women. Controlling exposure to lead or other hazardous substances requires the use of proper protective equipment, such as a properly fitted respirator (NIOSH approved) and proper containment and cleanup. For more information, call the National Lead Information Center at 1-800-424-LEAD or contact your local health authority.

9

HIGH PERFORMANCE COATING 09900
PROTECTIVE COATINGS

MONOPOLE INC.
UPDATED APRIL 2017



Manufacturer of
U.S. SPECIALTY COATINGS

4661 Alger Street • Los Angeles, CA 90039

Tel: 818-500-8585 • Fax: 818-502-0818

www.monopoleinc.com • Email: info@monopoleinc.com

MIXING: Stir the Part A thoroughly by itself (do not stir Part B by itself). Then pour Part B into Part A and mix thoroughly until the coating is uniform in color (~2-3 minutes). Proceed with the application immediately after mixing.

POT LIFE: 1-2 hours after mixing. Discard materials not applied within the recommended pot life period.

Apply in a well ventilated area. When sufficient ventilation is not available make sure to use respirators and the proper personal protective equipment.

APPLICATION:

- Apply only when air and surface temperature are between 50-90°F (10-32°C) and the relative humidity is below 85%.
- Apply the recommended primer if needed. A primer is not recommended for existing surfaces already painted with latex paint.
- Note: A continuous application will ensure a smooth and level coat that is free of lines and streaking. Application should not be stopped part way across an area and completed later.
- Two coats of **MONOCHEM DRY ERASE** are required over white or light colored surfaces. Three coats are recommended over darker surfaces to achieve hide.
- The recommended coverage rate is between 175-275 sq/ft/gallon depending on surface porosity, yielding 2-3 dry mils per coat. Do not exceed six (6) wet mils per coat to prevent hazing or micro bubbling from occurring.
- To obtain proper adhesion between coats it is imperative that recoating be done within 4-6 hours. Do not exceed 16-20 hours between coats or sanding may be required.
- Allow **MONOCHEM DRY ERASE** to cure for a minimum of 5-7 days before applying any markings. Once fully cured, **MONOCHEM DRY ERASE** markers may be applied to the surface and then wiped off with an eraser or lint-free cloth.
- For best results use good quality roller, brush or airless sprayer. Always apply a test patch prior to application to ensure the desired appearance and performance.

DRY ERASE MARKER REMOVAL:

- Use standard dry erasers or a non-abrasive cloth to wipe dry erase markings until they are completely removed.
- For tough to remove dry erase markings the following cleaners can be used: Expo White Board Cleaner, Windex Crystal Rain Clear, or D-limonene cleaning wipes (ex. by Tub O' Towels).

STANDARD DRY TIME:

- Pot Life: 1-2 hours
- Dry-To-Touch: 4-6 hours
- Recoat Time: 4-6 hours
- Maximum Recoat Time: 16-20 hours
(After 18-24 hours, abrading or sanding the surface will be required)
- Dry Erase Exposure: 5-7 days
- Full Cure: 5-7 days

SHELF LIFE:

MONOCHEM DRY ERASE has a one-year shelf-life in an unopened container stored at room temperature.

CLEAN-UP:

Clean brushes, hands and tools immediately with soap and water while the material is still wet.

PACKAGING:

MONOCHEM DRY ERASE is available in clear or white quart & gallon sized kits.

Gloss

- Clear Quart Kit: #5670-28OZ (20 Oz Part A & 8 Oz Part B)
- Clear Gallon Kit: #5670-01 (80 Oz, Part A & 32 Oz Part B)

- Tint Base Quart Kit: #5680-28OZ (20 Oz Part A & 8 Oz Part B)
- Tint Base Gallon Kit: #5680-01 (80 Oz, Part A & 32 Oz Part B)

- White Quart Kit: #5660-31OZ (23 Oz Part A & 8 Oz Part B)
- White Gallon Kit: #5660-01 (86 Oz, Part A & 32 Oz Part B)

WARRANTY:

Monopole Inc. warrants the **MONOCHEM DRY ERASE** for a 10-year period as long as the substrate, application, and cleaning methods meet the guidelines. For the duration of the 10-year warranty no additional coats of **MONOCHEM DRY ERASE** will need to be applied.

WARRANTY INFORMATION: MONOPOLE believes that the information in this publication is an accurate description of the typical characteristics and/or uses of the product or products. It is your responsibility to thoroughly test the product in your specific application to determine its safety and performance capabilities. Since use of this product is beyond our control, MONOPOLE, INC. cannot assume any risk or liability for results obtained when not used according to our specifications and directions. Unless MONOPOLE provides a specifically written statement of fitness for a particular use, MONOPOLE'S sole warranty is that the product will meet its current sales specifications. MONOPOLE disclaims any other expressed or implied warranties, including the warranty of merchantability and fitness for use. Your exclusive remedy and MONOPOLE'S sole liability for breach of warranty is limited to a refund of the purchase price or replacement of any product proven to be defective. In no event shall the seller be liable for any loss of profits or other consequential damages, including labor charges.

• TRUSTED QUALITY SINCE 1921 •



**RUST-OLEUM®
WRITE-ON PAINT®**

DESCRIPTION AND USES

Rust-Oleum® Write-On Paint® provides a smooth, hard finish which is suitable for use with dry-erase markers. Write-On Paint is ideal for use on interior surfaces such as drywall, Masonite, wood, cementitious and metal substrates. It is suitable for use in business offices, child care centers, classrooms and industrial work stations.

PRODUCT FEATURES

- Low odor
- VOC complaint
- Safe to use indoors
- Easy application
- No primer required

PRODUCTS

SKU	Description
72105	50 square foot Kit
72110	100 square foot Kit

RECOMMENDED PRIMER*

<u>For non-ferrous substrates</u>	SKU
Universal Acrylic Primer	278808 White
<u>For ferrous substrates</u>	SKU
ROC Prime 100	263501 Gray Primer

*Priming is not required if applying over a sound existing coating.

PRODUCT APPLICATION

SURFACE PREPARATION

Write-On is applied at a very thin film thickness; therefore **ALL** surfaces should be lightly sanded with a fine grit sandpaper to remove orange peel, high spots or any other irregularities on the substrate.

Previously coated surfaces must be in good, sound condition. Surface should be dull, clean, dry and free of dirt, grease, oil, mildew, dust and other contamination. If a solvent wipe is needed, use only MEK.

Uncoated surfaces should be primed with an appropriate primer.

PRODUCT APPLICATION (cont.)

APPLICATION

Apply only when air temperature is between 50-90°F (10-32°C) and the surface temperature is at least 5°F (3°C) above the dew point.

Combine the two components by placing the pouch on a flat horizontal surface. Roll the pouch from the larger side toward the smaller side forcing the inter compartment membrane to break and allow the two components to mix together. Then, thoroughly mix the materials by shaking the pouch back and forth, squeezing the edges and corners toward the center of the pouch. Mix the pouch for at least one full minute.

Once the material is thoroughly mixed, cut a corner off the pouch and pour the material into a roller tray. Use a ¼" nap, de-linted, high quality roller cover. Fully saturate the roller and roll out vertically, maintaining a wet edge pattern to spread the material. Back roll to achieve a thin coat of material over the entire surface. Cut in the edges and other non rollable areas by brush. Make sure there are no pin-holes and that the coverage is thin and uniform. Write-On Paint is designed to be applied as a thin film. Write-On Paint is not suitable for spray application.

DRY & RECOAT TIMES

Dry and recoat times are based on 70°F (21°C) and 50% relative humidity. Allow more time at cooler temperatures. Dries to handle and recoat in 4-8 hours. If a second is applied, the first coat must be sanded with fine grit sandpaper prior to re-coating.

Allow Write-On Paint to cure for 3 days before using dry erase markers. Dry erase markers may be applied to the surface and then wiped off with an eraser or lint-free cloth. If after erasing, a hint of marking remains, simply use a dry erase cleaner or any other household cleaner to remove marks. Do not use abrasive cleaners, pads or cloth. Let surface dry before dry erase markers are used again.

CLEAN-UP

Clean brush and other application tools immediately with xylene.

Keep product from freezing. Do not store in temperatures lower than 50°F (10°C).

TECHNICAL DATA

WRITE-ON PAINT®

PHYSICAL PROPERTIES

		WRITE-ON PAINT
Resin Type		Polyurea
Pigment Type		NA
Solvents		Parachlorobenzotrifluoride
Weight	Per Gallon	9.73 lbs.
	Per Liter	1.16 kg
Solids	By Weight	63.0%
	By Volume	65.0%
Volatile Organic Compounds*		175 g/l (1.50 lbs/gal)
Recommended Dry Film Thickness (DFT) Per Coat		1.0 mil (25µ)
Wet Film to Achieve DFT (unthinned material)		2.0 mils (50µ)
Practical Coverage at Recommended DFT (assumes 15% material loss)		50 sq.ft. pouch (1.2 m ² /l) 100 sq.ft. pouch (2.5 m ² /l)
Dry Times at 70-80°F (21-27°C) and 50% Relative Humidity	Handle	4-8 hours
	Recoat*	4-8 hours
	Full Cure	72 hours
Shelf Life		2 years
Flash Point		133°F (56°C)
Safety Information		For additional information, see SDS

* Previous coat must be sanded with fine grit sandpaper prior to re-coating.

The technical data and suggestions for use contained herein are correct to the best of our knowledge, and offered in good faith. The statements of this literature do not constitute a warranty, express, or implied, as to the performance of these products. As conditions and use of our materials are beyond our control, we can guarantee these products only to conform to our standards of quality, and our liability, if any, will be limited to replacement of defective materials. All technical information is subject to change without notice.

REV	DESCRIPTION	DATE
1	PLAN CHECK #1	6/14/2019
2	PD PLAN CHECK	10/31/2019
3	PD PLAN CHECK	12/14/2019



PROJECT	MAGNOLIA SCIENCE ACADEMY
PROJECT ADDRESS	18220 SHERMAN WAY, RESEDA, CA 91335
DRAWING TITLE	FIRST FLOOR FINISH PLAN
DATE	02/28/2019
SCALE	AS NOTED
DESIGNED BY	
CHECKED BY	
DATE	

FINISH NOTES

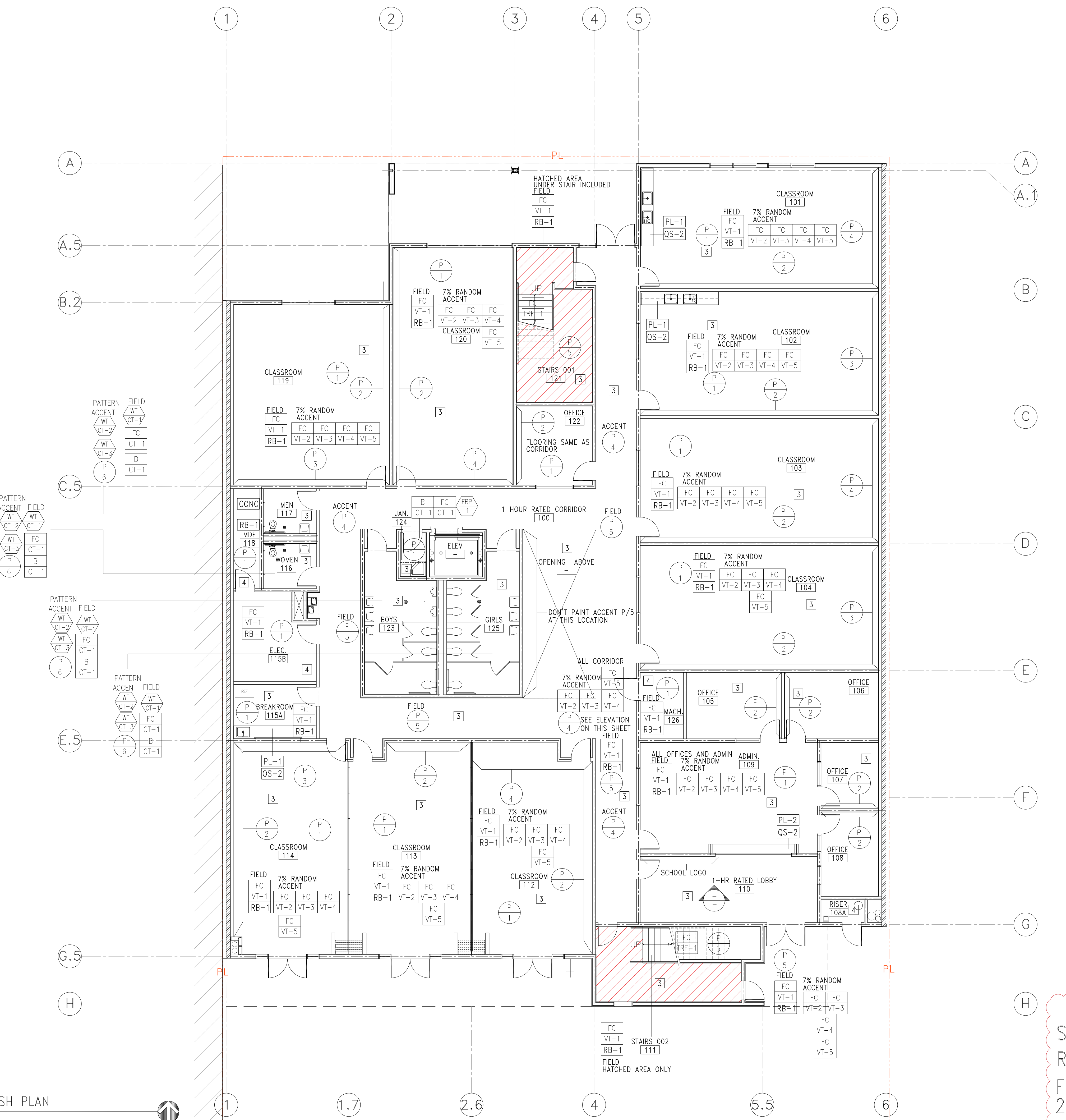
- CONTRACTOR SHALL SUBMIT 8"x8" SAMPLES OF ALL FINISHES TO ARCHITECT FOR APPROVAL AT LEAST 2 WEEKS PRIOR TO INSTALL.
- CONTRACTOR SHALL FOLLOW ALL MANUFACTURERS RECOMMENDATIONS & INSTRUCTIONS FOR THE INSTALL. OF ANY FINISHES OR PRODUCTS.
- ALL MATERIAL AND ITS INSTALLATION SHALL COMPLY W/ ALL BUILDING FIRE & ADA CODES IN EFFECT IN THE CITY OF LOS ANGELES.
- U.O.N. ALL ACCESS DOORS & PANELS SHALL BE PAINTED TO MATCH ADJ. SURFACE COLOR & FINISH.
- G.C. AND THEIR SUBS SHALL BE RESPONSIBLE FOR ANY WALLCOVERING INSTALLATIONS.
- ALL PRIMING & OR SIZING OF WALLS TO RECEIVE WALLCOVERING SHALL BE DONE BY THE SUB CONTRACTOR INSTALLING THE WALLCOVERING.
- CONTRACTOR SHALL SUBMIT A CARPET SEAMING DIAGRAM & DIRECTION OF CARPET TO ARCHITECT AT LEAST 2 WEEKS PRIOR TO INSTALL.
- FLOORING SUB SHALL PRE-INSPECT EXIST. FLOOR SLAB TO CHECK FOR CRACKS & UNEVENNESS. FLOAT FLOORS FOR PROPER INSTALLATIONS OF FLOOR FINISHES AS REQ'D. CONTRACTOR SHALL INCLUDE ALL COSTS TO PROPERLY PREPARE SLAB FOR SPECIFIED FINISH.
- NO SUBSTITUTIONS OF FINISHES SHALL BE MADE W/OUT PRIOR WRITTEN APPROVAL FROM ARCHITECT.
- PAINT INSIDE FACE OF ANY LIGHT COVERS. FLAT FINISH.
- ALL DRIVALL CEILINGS SHALL BE PREPARED TO RECEIVE FLAT LATEX PAINT FINISH WITHOUT ANY APPARENT SEAMS OR IMPERFECTIONS.
- CABINET SUB CONTRACTOR SHALL BE RESPONSIBLE FOR ALL FINISHES ON CABINETRY AS SHOWN ON MILLWORK PLANS.
- WASH ALL REMAINING FLOORING.
- INTERIOR FINISH SHALL BE PROVIDED IN ACCORDANCE TO TITLE 24, SECTION 804, AS FOLLOWS: CLASS I-VERTICAL ENCLOSURES; CLASS II-CORRIDORS; CLASS III-ROOMS. ALL DRAPES, HANGINGS, CURTAINS, DROPS AND ALL OTHER DECORATIVE MATERIAL TO COMPLY WITH FIRE CODE SECTION 1103.3.3.
- PROVIDE ANTI-GRAFFITI FINISH AT THE FIRST 9 FEET, MEASURED FROM GRADE, AT EXTERIOR WALLS AND DOORS. (PAINTED SURFACE - LARR #2560IT, UNPAINTED SURFACE - LARR #25286T)
- INTERIOR WALL AND CEILING FINISHES SHALL BE PROVIDED IN ACCORDANCE WITH BUILDING CODE 801 AND TABLE 801.3.
- CURTAINS, DRAPERIES, HANGINGS AND OTHER DECORATIVE MATERIALS SUSPENDED FROM WALLS OR CEILINGS SHALL MEET THE FLAME PROPAGATION PERFORMANCE CRITERIA OF NFPA 701, IN ACCORDANCE WITH BUILDING CODE 806.2 OR BE NONCOMBUSTIBLE. BUILDING CODE 806.1.
- ALL FLOORING TO BE SLIP-RESISTANT PER ADA CODE.
- TOILET ROOM FLOORS SHALL HAVE A SMOOTH, HARD NON ABSORBENT SURFACE SUCH AS PORTLAND CEMENT, CERAMIC TILE OR OTHER APPROVED MATERIAL THAT EXTENDS UPWARD ONTO THE WALLS AT LEAST 4" (1210.2.1).
- WALLS WITHIN 2 FEET (610 MM) OF THE FRONT AND SIDES OF URINALS AND WATER CLOSETS SHALL HAVE A SMOOTH, HARD NON-ABSORBENT SURFACE OF PORTLAND CEMENT, CONCRETE, CERAMIC TILE OR OTHER SMOOTH, HARD NON-ABSORBENT SURFACE TO A HEIGHT OF 4 FEET (1219 MM), AND EXCEPT FOR STRUCTURAL ELEMENTS, THE MATERIALS USED IN SUCH WALLS SHALL BE OF A TYPE THAT IS NOT ADVERSELY AFFECTED BY MOISTURE. (1210.2.2)
- CEMENT, FIBER-CEMENT OR GLASS MATT GYPSUM BACKERS IN COMPLIANCE WITH ASTM C1178, C1288 OR C1325 SHALL BE USED AS A BASE FOR WALL TILE IN TUB AND SHOWER AREAS AND WALL AND CEILING PANELS IN SHOWER AREAS. WATER-RESISTANCE GYPSUM BACKING BOARD SHALL BE USED AS A BASE FOR TILE IN WATER CLOSET COMPARTMENT WALLS WHEN INSTALLED IN ACCORDANCE WITH GA-216 OR ASTM C840. REGULAR GYPSUM WALLBOARD IS PERMITTED UNDER TILE OR WALL PANELS IN OTHER WALL AND CEILING AREAS WHEN INSTALLED IN ACCORDANCE WITH GA-216 OR ASTM C840. WATER-RESISTANT GYPSUM BOARD SHALL NOT BE USED IN THE FOLLOWING LOCATIONS: SECTION 2506.1.
 - OVER A VAPOR RETARDER.
 - IN AREAS SUBJECT TO CONTINUOUS HIGH HUMIDITY SUCH AS SAUNAS, STEAM ROOMS OR GANG SHOWER ROOMS.
 - ON CEILINGS WHERE FRAME SPACING EXCEEDS 12 INCHES O.C. FOR 1/2 INCH THICK AND MORE THAN 16 INCHES O.C. FOR 5/8 INCH THICK.
- EVERY SPACE INTENDED FOR HUMAN OCCUPANCY SHALL BE PROVIDED WITH NATURAL LIGHT BY MEANS OF EXTERIOR GLAZED OPENINGS IN ACCORDANCE WITH SECTION 1205.2 OR SHALL BE PROVIDED WITH ARTIFICIAL LIGHT THAT IS ADEQUATE TO PROVIDE AN AVERAGE ILLUMINATION OF 10 FOOT-CANDELES OVER THE AREA OF THE ROOM AT A HEIGHT OF 30 INCHES ABOVE THE FLOOR LEVEL. (1205.1 AND 1205.3)
- ANY DECORATIONS SHALL BE NONCOMBUSTIBLE OR FLAME-RETARDANT TREATED IN AN APPROVED MANNER (CURTAINS, DRAPES, SHADES, HANGINGS, ETC) (LARC 57.22)

FINISH PLAN NOTES

- INTERIOR FINISH MATERIALS APPLIED TO WALL AND CEILING SHALL BE TESTED AS SPECIFIED IN SECTION 802. OF THE CBC.
- IN JANITOR CLOSET INSTALL FRP 48" AFF AROUND MOP SINK, AND IN ALL WALL AROUND IT
- PROVIDE A LEVEL "S" SMOOTH FINISH FOR ALL DRYWALL
- PROVIDE A LEVEL "S" SMOOTH FINISH FOR ALL DRYWALL
- EXTERIOR STUCCO TO BE TROWEL APPLIED. PROVIDE DUNNE EDWARDS ENDURAELASTIC 10 ELASTOMERIC FLAT FINISH PRIOR TO APPLYING FINAL ACRIBOND FLAT PAINT COLOR.

CA GREEN CODE NOTES

- ENVIRONMENTAL QUALITY
- IF THE HVAC SYSTEM IS USED DURING CONSTRUCTION, PROVIDE RETURN AIR FILTERS WITH A MINIMUM EFFICIENCY REPORTING VALUE (MERV) OF 8, BASED ON ASHRAE 52.2-1999, OR AN AVERAGE EFFICIENCY OF 30 PERCENT, BASED ON ASHRAE 52.1-1992. REPLACE ALL FILTERS PRIOR TO OCCUPANCY OTR AT THE CONCLUSION OF CONSTRUCTION.
 - AT THE TIME OF ROUGH INSTALLATION, OR DURING STORAGE ON THE CONSTRUCTION SITE AND UNTIL FINAL STARTUP OF THE HEATING AND COOLING EQUIPMENT, ALL DUCT AND OTHER RELATED AIR DISTRIBUTION COMPONENT OPENINGS SHALL BE COVERED WITH TAPE, PLASTIC, SHEET METAL, OR OTHER ACCEPTABLE METHODS TO REDUCE THE AMOUNT OF DUST OR DEBRIS WHICH MAY COLLECT IN THE SYSTEM. (5.504.3)
 - PROVIDE FINISH PLAN COMPLYING WITH THE FOLLOWING:
 - ADHESIVES, SEALANTS AND CAULKS, PAINTS AND COATINGS, AND AEROSOL PAINTS AND COATINGS SHALL MEET OR EXCEED THE STANDARDS OUTLINED IN SECTIONS 5.504.4.1, 5.504.4.3, AND 5.504.4.3.1 RESPECTIVELY. VERIFICATION OF COMPLIANCE WITH THESE SECTIONS MUST BE PROVIDED AT THE TIME OF INSPECTION.
 - ALL CARPET INSTALLED IN THE BUILDING INTERIOR SHALL MEET THE TESTING AND PRODUCT REQUIREMENTS OF ONE OF THE FOLLOWING: (5.504.4.4)
 - CARPET AND RUG INSTITUTE'S GREEN LABEL PLUS PROGRAM OR
 - CALIFORNIA DEPARTMENT OF PUBLIC HEALTH STANDARD PRACTICE FOR THE TESTING OF VOC'S (SPEC 01350) OR
 - NSF/ANSI 140 AT THE GOLD LEVEL OR
 - SCIENTIFIC CERTIFICATIONS SYSTEMS SUSTAINABLE CHOICE
 - ALL CARPET CUSHION INSTALLED IN THE BUILDING INTERIOR SHALL MEET THE REQUIREMENTS OF THE CARPET AND RUG INSTITUTE GREEN LABEL PROGRAM. CARPET ADHESIVES SHALL NOT EXCEED A VOC LIMIT OF 50 G/L. (5.504.4.4.1, 5.504.4.4.2)
 - COMPOSITE WOOD PRODUCTS (HARDWOOD PLYWOOD, PARTICLE BOARD, AND MDF COMPOSITE WOOD) INSTALLED ON THE INTERIOR OR EXTERIOR OF THE BUILDING SHALL MEET OR EXCEED THE STANDARDS OUTLINED IN TABLE 5.504.4.5. (5.504.4.5)
 - MINIMUM OF 50% OF FLOOR AREA RECEIVING RESILIENT FLOORING SHALL COMPLY WITH THE VOC EMISSION LIMITS DEFINED IN THE CHPS LOW-EMITTING MATERIALS LIST OR CERTIFIED UNDER THE RFCI FLOORSCORE PROGRAM. VERIFICATION OF COMPLIANCE WITH THESE SECTIONS MUST BE PROVIDED AT THE TIME OF INSPECTION. (5.504.4.6)



SK-018A-R
REF. TRN-093
FIRST FLOOR FINISH PLAN
2/27/2019

FIRST FLOOR FINISH PLAN
SCALE: 1/8" = 1'-0"

FINISH SPECIFICATIONS:

- PAINT- INTERIOR
- MFG: DUNN EDWARDS
COLOR: DEKAY SWISS COFFEE
FINISH: SEMI GLOSS
LOCATION: FIELD - CLASSROOMS
 - MFG: MONOCHEM- DRY ERASE
COLOR: DEKAY SWISS COFFEE
FINISH: PIGMENTED GLOSS(5660)
LOCATION: ACCENT- WHERE IS SPECIFIED
 - MFG: DUNN EDWARDS
COLOR: DE5787 PACIFIC PALISADE
FINISH: SEMI GLOSS
LOCATION: ACCENT- WHERE IS SPECIFIED
 - MFG: DUNN EDWARDS
COLOR: DE5055 MERLOT
FINISH: SEMI GLOSS
LOCATION: ACCENT- WHERE IS SPECIFIED
 - MFG: DUNN EDWARDS
COLOR: DE1625 RECLAIMED WOOD
FINISH: SEMI GLOSS
LOCATION: ACCENT- CORRIDORS
 - MFG: DUNN EDWARDS
COLOR: DE6381 SILVER BULLET
FINISH: SEMI GLOSS
LOCATION: ACCENT- RESTROOMS

PAINT- EXTERIOR
SEE ELEVATION PLANS FOR COLOR SPEC/LOCATION

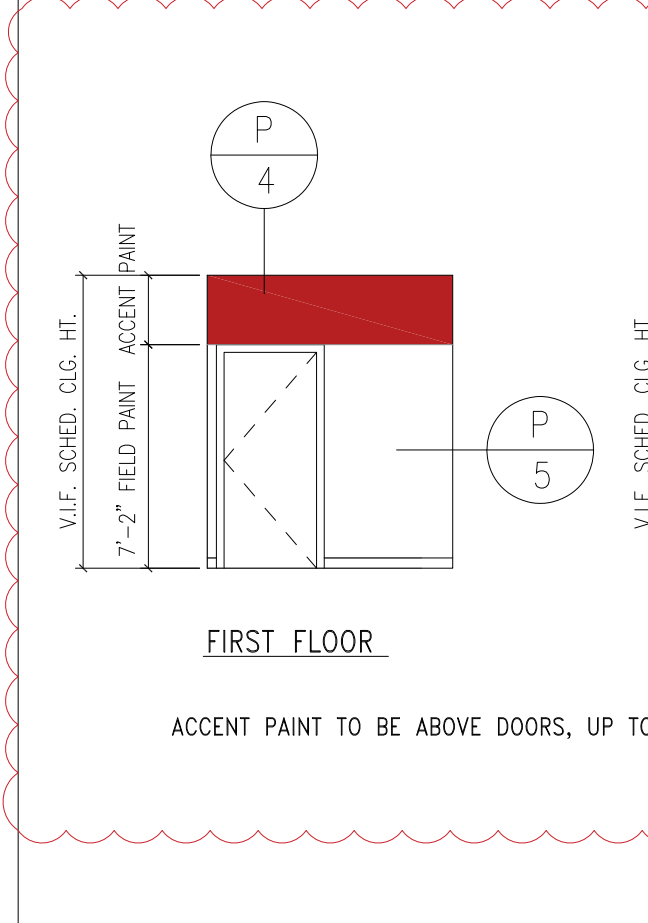
- RUBBER BASE**
MFG: BURKE
TYPE: 4" CONVEX
COLOR: 860 ROCKY
LOCATION: THROUGHOUT (U.O.N)
- PLASTIC LAMINATE**
MFG: FORMICA
COLOR: 86992-58 HARDROCK MAPLE
FINISH: MATE
LOCATION: UPPER & LOWER CABINET WHERE SPECIFIED
- QUARTZ STONE**
MFG: PENTAL QUARTZ
TYPE: 3/4" SLAB
COLOR: B08812P JAVA NOIR POLISHED
BACKSLASH: " ALL WAY AROUND COUNTER
LOCATION: UPPER & LOWER CABINET
LOCATION: SEE CABINETWORK SHEETS
- QUARTZ STONE**
MFG: PENTAL QUARTZ
TYPE: 3/4" SLAB
COLOR: B08806P HILAND POLISHED
BACKSLASH: " ALL WAY AROUND COUNTER
LOCATION: SEE CABINETWORK SHEETS

- VINYL COMPOSITION TILE**
MFG: ARMSTRONG- STANDARD EXCELON
COLOR: 51927 FIELD GRAY
SIZE: 12"x12"
LOCATION: FIELD THROUGHOUT (U.O.N.)
- (RANDOM ACCENT 7% TOTAL)**
MFG: ARMSTRONG- IMPERIAL TEXTURE
COLOR: 51915 CHARCOAL
SIZE: 12"x12"
LOCATION: ACCENT
- MFG: ARMSTRONG- MULTICOLOR
COLOR: 52517 JESTER RED
SIZE: 12"x12"
LOCATION: ACCENT
- MFG: ARMSTRONG- IMPERIAL TEXTURE
COLOR: 57508 BLUE DREAM
SIZE: 12"x12"
LOCATION: ACCENT
- MFG: ARMSTRONG- IMPERIAL TEXTURE
COLOR: 51966 LITTLE GREEN APPLE
SIZE: 12"x12"
LOCATION: ACCENT

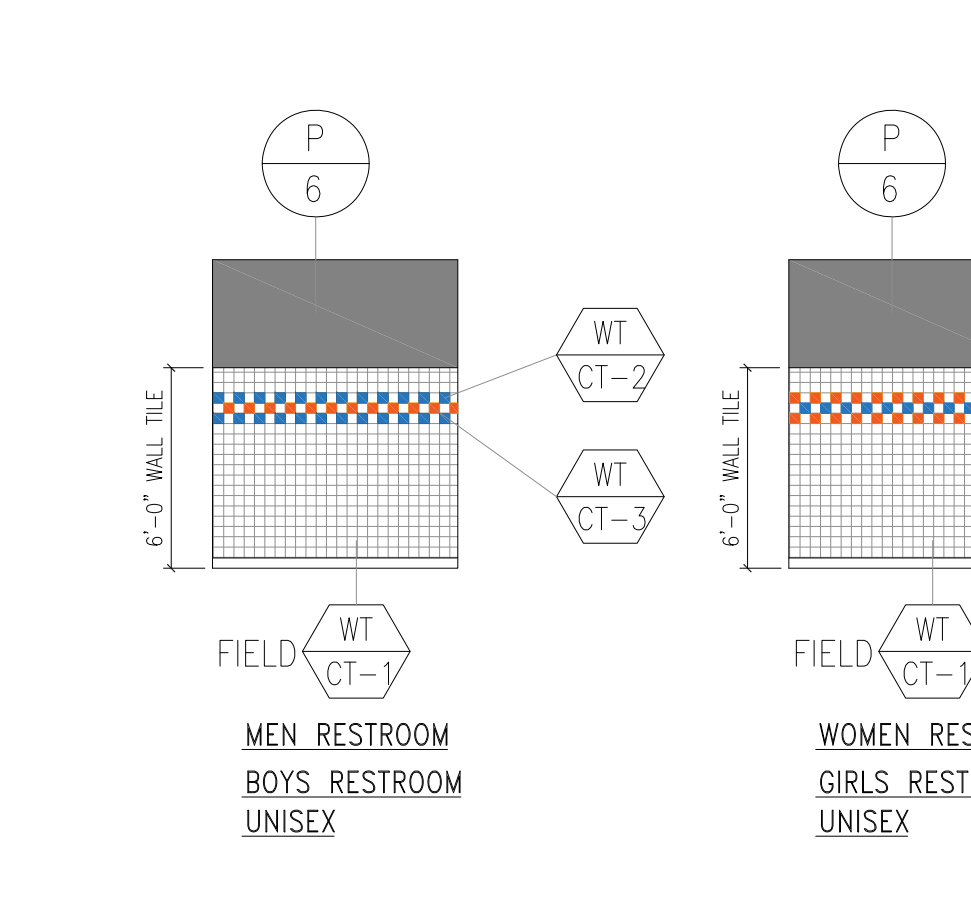
- FIBERGLASS REINFORCED PANEL**
MFG: KOROGUARD PROTECTIVE SHEET WALLCOVERING
COLOR: LIGHT GRAY
THICKNESS: 0.060"
LOCATION: JANITOR'S CLOSET RNS #124 & #221 BEHIND MOP SINKS & 48" AFF. AND ALL WALLS
- CERAMIC TILE (WALLS)**
MFG: DALTILE
TYPE: SEMI-GLOSS
COLOR: 0195 ALMOND (1)
SIZE: 4" X 4"
LOCATION: RESTROOM WALLS (FIELD)
- MFG: DALTILE
TYPE: SEMI-GLOSS
COLOR: 0169-WATERFALL (1)
SIZE: 4" X 4"
LOCATION: RESTROOM WALLS (ACCENT)
- MFG: DALTILE
TYPE: SEMI-GLOSS
COLOR: 0092 CORAL BEAD (4)
SIZE: 4" X 4"
LOCATION: RESTROOM WALLS (ACCENT)
- SEE RESTROOM TILE PATTERN ELEVATION
- STAIR TREAD/RISER/LANDING**
MFG: BURKE UNI-STEP STAIR SYSTEM
COLOR: 010 SHELL GRAY
STYLE: ENDURA FLECKSHILES ONE STEP TREAD RISER
VISUALLY IMPAIRED COLOR: BRICK
LOCATION: ALL INTERIOR STAIR TREAD/RISER/LANDING

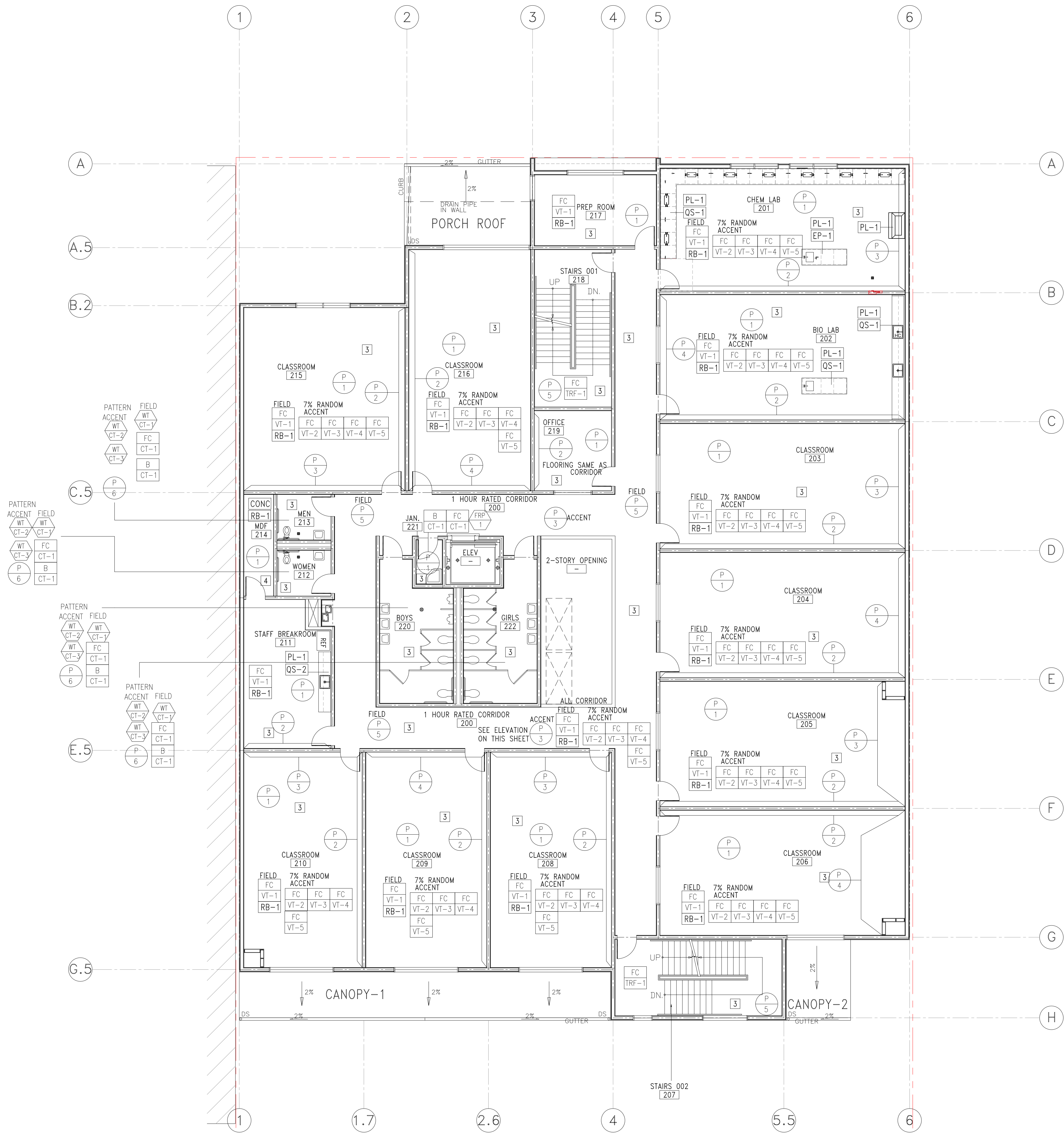
- CERAMIC TILE BASE**
MFG: DALTILE
TYPE: KEYSTONE
COLOR: D208 SUDE GRAY SPECKLE
BUILT UP BASE MB-58
SIZE: 2" X 2"
LOCATION: RESTROOM WALLS
- CERAMIC TILE (FLOOR)**
MFG: DALTILE
TYPE: KEYSTONE
COLOR: D208 SUDE GRAY SPECKLE
SIZE: 2" X 2"
LOCATION: RESTROOM FLOORS
- TILE GROUT**
MFG: CUSTOM BUILDING PRODUCTS
COLOR: #101 QUARTZ
LOCATION: WALLS
- MFG: CUSTOM BUILDING PRODUCTS
COLOR: #19 PEWTER
LOCATION: FLOOR & WALL BASE ONLY

TYPICAL CORRIDOR WALLS



RESTROOM WALL DESIGN DETAIL- TYPICAL





SK-018B-R
REF. TRN-093
SECOND FLOOR FINISH PLAN
2/27/2019

SECOND FLOOR FINISH PLAN
SCALE: 1/8" = 1'-0"

- ### FINISH NOTES
- CONTRACTOR SHALL SUBMIT 8"x8" SAMPLES OF ALL FINISHES TO ARCHITECT FOR APPROVAL AT LEAST 2 WEEKS PRIOR TO INSTALL.
 - CONTRACTOR SHALL FOLLOW ALL MANUFACTURERS RECOMMENDATIONS & INSTRUCTIONS FOR THE INSTALL. OF ANY FINISHES OR PRODUCTS.
 - ALL MATERIAL AND ITS INSTALLATION SHALL COMPLY W/ ALL BUILDING FIRE & ADA CODES IN EFFECT IN THE CITY OF LOS ANGELES.
 - U.O.N. ALL ACCESS DOORS & PANELS SHALL BE PAINTED TO MATCH ADJ. SURFACE COLOR & FINISH.
 - G.C. AND THEIR SUBS SHALL BE RESPONSIBLE FOR ANY WALLCOVERING INSTALLATIONS.
 - ALL PRIMING & OR SIZING OF WALLS TO RECEIVE WALLCOVERING SHALL BE DONE BY THE SUB CONTRACTOR INSTALLING THE WALLCOVERING.
 - CONTRACTOR SHALL SUBMIT A CARPET SEAMING DIAGRAM & DIRECTION OF CARPET TO ARCHITECT AT LEAST 2 WEEKS PRIOR TO INSTALL.
 - FLOORING SUB SHALL PRE-INSPECT EXIST. FLOOR SLAB TO CHECK FOR CRACKS & UNEVENNESS. FLOAT FLOORS FOR PROPER INSTALLATIONS OF FLOOR FINISHES AS REQ'D. CONTRACTOR SHALL INCLUDE ALL COSTS TO PROPERLY PREPARE SLAB FOR SPECIFIED FINISH.
 - NO SUBSTITUTIONS OF FINISHES SHALL BE MADE W/OUT PRIOR WRITTEN APPROVAL FROM ARCHITECT.
 - PAINT INSIDE FACE OF ANY LIGHT COVERS. FLAT FINISH.
 - ALL DRYWALL CEILINGS SHALL BE PREPARED TO RECEIVE FLAT LATEX PAINT FINISH WITHOUT ANY APPARENT SEAMS OR IMPERFECTIONS.
 - CABINET SUB CONTRACTOR SHALL BE RESPONSIBLE FOR ALL FINISHES ON CABINETS AS SHOWN ON MILLWORK PLANS.
 - WASH ALL REMAINING FLOORING.
 - INTERIOR FINISH SHALL BE PROVIDED IN ACCORDANCE TO TITLE 24, SECTION 804, AS FOLLOWS: CLASS I-VERTICAL ENCLOSURES; CLASS II-CORRIDORS; CLASS III-ROOMS. ALL DRAPES, HANGINGS, CURTAINS, DROPS AND ALL OTHER DECORATIVE MATERIAL TO COMPLY WITH FIRE CODE SECTION 1103.3.3.
 - PROVIDE ANTI-GRAFFITI FINISH AT THE FIRST 9 FEET, MEASURED FROM GRADE, AT EXTERIOR WALLS AND DOORS. (PAINTED SURFACE - LARR #2560IT, UNPAINTED SURFACE - LARR #25286T)
 - INTERIOR WALL AND CEILING FINISHES SHALL BE PROVIDED IN ACCORDANCE WITH BUILDING CODE 801 AND TABLE 803.3.
 - CURTAINS, DRAPERIES, HANGINGS AND OTHER DECORATIVE MATERIALS SUSPENDED FROM WALLS OR CEILINGS SHALL MEET THE FLAME PROPAGATION PERFORMANCE CRITERIA OF NFPA 701, IN ACCORDANCE WITH BUILDING CODE 806.2 OR BE NONCOMBUSTIBLE. BUILDING CODE 806.1.
 - ALL FLOORING TO BE SLIP-RESISTANT PER ADA CODE.
 - TOILET ROOM FLOORS SHALL HAVE A SMOOTH, HARD NON ABSORBENT SURFACE SUCH AS PORTLAND CEMENT, CERAMIC TILE OR OTHER APPROVED MATERIAL THAT EXTENDS UPWARD ONTO THE WALLS AT LEAST 4" (1210.2.1)
 - WALLS WITHIN 2 FEET (610 MM) OF THE FRONT AND SIDES OF URINALS AND WATER CLOSETS SHALL HAVE A SMOOTH, HARD NON-ABSORBENT SURFACE OF PORTLAND CEMENT, CONCRETE, CERAMIC TILE OR OTHER SMOOTH, HARD NON-ABSORBENT SURFACE TO A HEIGHT OF 4 FEET (1219 MM), AND EXCEPT FOR STRUCTURAL ELEMENTS, THE MATERIALS USED IN SUCH WALLS SHALL BE OF A TYPE THAT IS NOT ADVERSELY AFFECTED BY MOISTURE. (1210.2.2)
 - CEMENT, FIBER-CEMENT OR GLASS MAT GYPSUM BACKERS IN COMPLIANCE WITH ASTM C1178, C1288 OR C1325 SHALL BE USED AS A BASE FOR WALL TILE IN TUB AND SHOWER AREAS AND WALL AND CEILING PANELS IN SHOWER AREAS. WATER-RESISTANCE GYPSUM BACKING BOARD SHALL BE USED AS A BASE FOR TILE IN WATER CLOSET COMPARTMENT WALLS WHEN INSTALLED IN ACCORDANCE WITH GA-216 OR ASTM C840. REGULAR GYPSUM WALLBOARD IS PERMITTED UNDER TILE OR WALL PANELS IN OTHER WALL AND CEILING AREAS WHEN INSTALLED IN ACCORDANCE WITH GA-216 OR ASTM C840. WATER-RESISTANT GYPSUM BOARD SHALL NOT BE USED IN THE FOLLOWING LOCATIONS: SECTION 2506.1.
 - OVER A VAPOR RETARDER.
 - IN AREAS SUBJECT TO CONTINUOUS HIGH HUMIDITY SUCH AS SAUNAS, STEAM ROOMS OR GANG SHOWER ROOMS.
 - ON CEILING WHERE FRAME SPACING EXCEEDS 12 INCHES O.C. FOR 1/2 INCH THICK AND MORE THAN 16 INCHES O.C. FOR 5/8 INCH THICK.
 - EVERY SPACE INTENDED FOR HUMAN OCCUPANCY SHALL BE PROVIDED WITH NATURAL LIGHT BY MEANS OF EXTERIOR GLAZED OPENINGS IN ACCORDANCE WITH SECTION 1205.2 OR SHALL BE PROVIDED WITH ARTIFICIAL LIGHT THAT IS ADEQUATE TO PROVIDE AN AVERAGE ILLUMINATION OF 10 FOOT-CANDELES OVER THE AREA OF THE ROOM AT A HEIGHT OF 30 INCHES ABOVE THE FLOOR LEVEL. (1205.1 AND 1205.3)
 - ANY DECORATIONS SHALL BE NONCOMBUSTIBLE OR FLAME-RETARDANT TREATED IN AN APPROVED MANNER (CURTAINS, DRAPES, SHADES, HANGINGS, ETC) (LARC 57.22)

- ### FINISH PLAN NOTES
- INTERIOR FINISH MATERIALS APPLIED TO WALL AND CEILINGS SHALL BE TESTED AS SPECIFIED IN CBC SECTION 802.
 - INTERIOR FINISH MATERIALS APPLIED TO WALL AND CEILING SHALL BE TESTED AS SPECIFIED IN SECTION 802. OF THE CBC.
 - IN JANITOR CLOSET INSTALL FRP 48" AFF AROUND MOP SINK, AND IN ALL WALL AROUND IT
 - PROVIDE A LEVEL "S" SMOOTH FINISH FOR ALL DRYWALL
 - PROVIDE A LEVEL "S" SMOOTH FINISH FOR ALL DRYWALL
 - EXTERIOR STUCCO TO BE TROWEL APPLIED. PROVIDE DUNNE EDWARDS ENDURALASTIC 10 ELASTOMERIC FLAT FINISH PRIOR TO APPLYING FINAL ACRIBOND FLAT PAINT COLOR.

- ### CA GREEN CODE NOTES
- ENVIRONMENTAL QUALITY**
- IF THE HVAC SYSTEM IS USED DURING CONSTRUCTION, PROVIDE RETURN AIR FILTERS WITH A MINIMUM EFFICIENCY REPORTING VALUE (MERV) OF 8, BASED ON ASHRAE 52.2-1999, OR AN AVERAGE EFFICIENCY OF 50 PERCENT, BASED ON ASHRAE 52.1-1992. REPLACE ALL FILTERS PRIOR TO OCCUPANCY OTR AT THE CONCLUSION OF CONSTRUCTION.
 - AT THE TIME OF ROUGH INSTALLATION, OR DURING STORAGE ON THE CONSTRUCTION SITE AND UNTIL FINAL STARTUP OF THE HEATING AND COOLING EQUIPMENT, ALL DUCT AND OTHER RELATED AIR DISTRIBUTION COMPONENT OPENINGS SHALL BE COVERED WITH TAPE, PLASTIC, SHEET METAL, OR OTHER ACCEPTABLE METHODS TO REDUCE THE AMOUNT OF DUST OR DEBRIS WHICH MAY COLLECT IN THE SYSTEM. (5.504.3)
 - PROVIDE FINISH PLAN COMPLYING WITH THE FOLLOWING:
 - ADHESIVES, SEALANTS AND CAULKS, PAINTS AND COATINGS, AND AEROSOL PAINTS AND COATINGS SHALL MEET OR EXCEED THE STANDARDS OUTLINED IN SECTIONS 5.504.4.1, 5.504.4.3, AND 5.504.4.3.1 RESPECTIVELY. VERIFICATION OF COMPLIANCE WITH THESE SECTIONS MUST BE PROVIDED AT THE TIME OF INSPECTION.
 - ALL CARPET INSTALLED IN THE BUILDING INTERIOR SHALL MEET THE TESTING AND PRODUCT REQUIREMENTS OF ONE OF THE FOLLOWING: (5.504.4.4)
 - CARPET AND RUG INSTITUTE'S GREEN LABEL PLUS PROGRAM OR
 - CALIFORNIA DEPARTMENT OF PUBLIC HEALTH STANDARD PRACTICE FOR THE TESTING OF VOC'S (SPEC 01350) OR
 - NSF/ANSI 140 AT THE GOLD LEVEL OR
 - SCIENTIFIC CERTIFICATIONS SYSTEMS SUSTAINABLE CHOICE
 - ALL CARPET CUSHION INSTALLED IN THE BUILDING INTERIOR SHALL MEET THE REQUIREMENTS OF THE CARPET AND RUG INSTITUTE GREEN LABEL PROGRAM. CARPET ADHESIVES SHALL NOT EXCEED A VOC LIMIT OF 50 G/L. (5.504.4.4.1, 5.504.4.4.2)
 - COMPOSITE WOOD PRODUCTS (HARDWOOD PLYWOOD, PARTICLE BOARD, AND MDF COMPOSITE WOOD) INSTALLED ON THE INTERIOR OR EXTERIOR OF THE BUILDING SHALL MEET OR EXCEED THE STANDARDS OUTLINED IN TABLE 5.504.4.5. (5.504.4.5)
 - MINIMUM OF 50% OF FLOOR AREA RECEIVING RESILIENT FLOORING SHALL COMPLY WITH THE VOC EMISSION LIMITS DEFINED IN THE CHIPS LOW-EMITTING MATERIALS LIST OR CERTIFIED UNDER THE RFCI FLOORSCORE PROGRAM. VERIFICATION OF COMPLIANCE WITH THESE SECTIONS MUST BE PROVIDED AT THE TIME OF INSPECTION. (5.504.4.6)

- ### FINISH SPECIFICATIONS:
- PAINT - INTERIOR**
- MFG.: DUNN EDWARDS
COLOR: DENW341 SWISS COFFEE
FINISH: SEMI GLOSS
LOCATION: FIELD - CLASSROOMS
 - MFG.: MONOCHEM - DRY ERASE
COLOR: DENW341 SWISS COFFEE
FINISH: PRIMEATED GLOSS(GRO)
LOCATION: ACCENT - WHERE IS SPECIFIED
 - MFG.: DUNN EDWARDS
COLOR: DE5787 PACIFIC PALISADE
FINISH: SEMI GLOSS
LOCATION: ACCENT - WHERE IS SPECIFIED
 - MFG.: DUNN EDWARDS
COLOR: DE5055 MERLOT
FINISH: SEMI GLOSS
LOCATION: ACCENT - WHERE IS SPECIFIED
 - MFG.: DUNN EDWARDS
COLOR: DE6381 RECLAIMED WOOD
FINISH: SEMI GLOSS
LOCATION: FIELD - CORRIDORS
 - MFG.: DUNN EDWARDS
COLOR: DE6381 SILVER BULLET
FINISH: SEMI GLOSS
LOCATION: ACCENT - RESTROOMS
- PAINT - EXTERIOR**
- SEE ELEVATION PLANS FOR COLOR SPEC/LOCATION

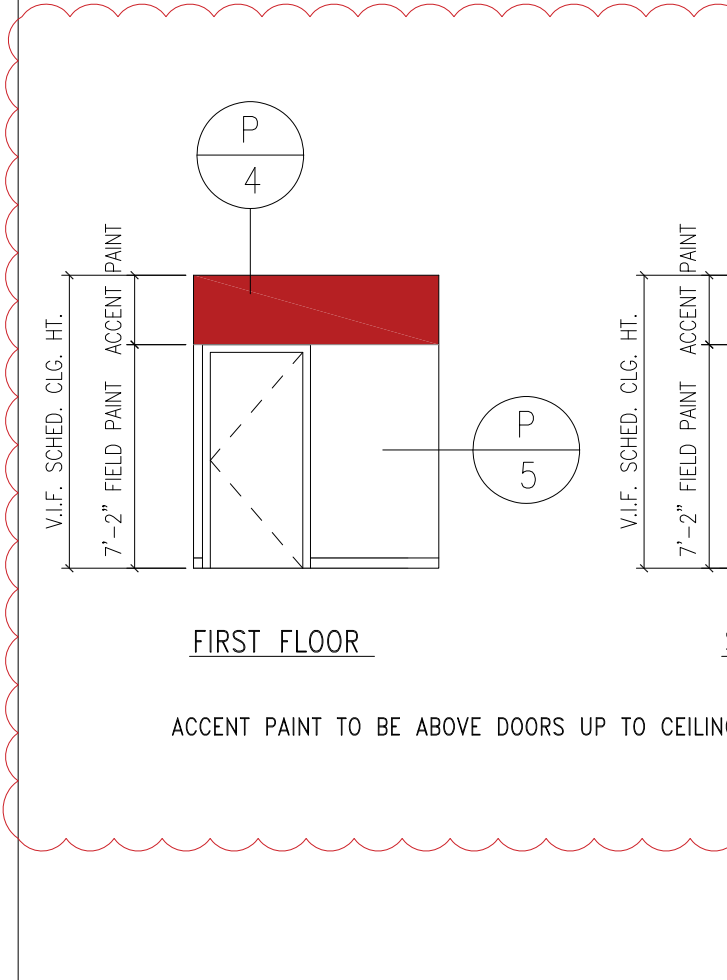
- RUBBER BASE**
- MFG.: BURKE
TYPE: 4" OVEDED
COLOR: 860 ROCKY
LOCATION: THROUGHOUT (U.O.N)
- PLASTIC LAMINATE**
- MFG.: FORMICA
COLOR: 86892-58 HARDROCK MAPLE
FINISH: MATE
LOCATION: UPPER & LOWER CABINET WHERE SPECIFIED
- MFG.: FORMICA
COLOR: 8821-58 JUST BLUE
FINISH: MATE
LOCATION: UPPER & LOWER CABINET WHERE SPECIFIED
- QUARTZ STONE**
- MFG.: PENAL QUARTZ
TYPE: 3/4" SLAB
COLOR: B08812P JAVA NOIR POLISHED
BACKSPASH: 6" ALL WAY AROUND COUNTER
LOCATION: SEE CABINETWORK SHEETS
- MFG.: PENAL QUARTZ
TYPE: 3/4" SLAB
COLOR: B08806P HILAND POLISHED
BACKSPASH: 6" ALL WAY AROUND COUNTER
LOCATION: SEE CABINETWORK SHEETS

- VINYL COMPOSITION TILE**
- MFG.: ARMSTRONG - STANDARD EXCELON
COLOR: 51927 FIELD GRAY
SIZE: 12"x12"
LOCATION: FIELD THROUGHOUT (U.O.N)
- (RANDOM ACCENT 7% TOTAL)
- MFG.: ARMSTRONG - IMPERIAL TEXTURE
COLOR: 51915 CHARCOAL
SIZE: 12"x12"
LOCATION: ACCENT 7% RANDOM
- MFG.: ARMSTRONG - MULTICOLOR
COLOR: 52817 JESTER RED
SIZE: 12"x12"
LOCATION: ACCENT 7% RANDOM
- MFG.: ARMSTRONG - IMPERIAL TEXTURE
COLOR: 57508 BLUE DREAM
SIZE: 12"x12"
LOCATION: ACCENT 7% RANDOM
- MFG.: ARMSTRONG - IMPERIAL TEXTURE
COLOR: 51866 LITTLE GREEN APPLE
SIZE: 12"x12"
LOCATION: ACCENT

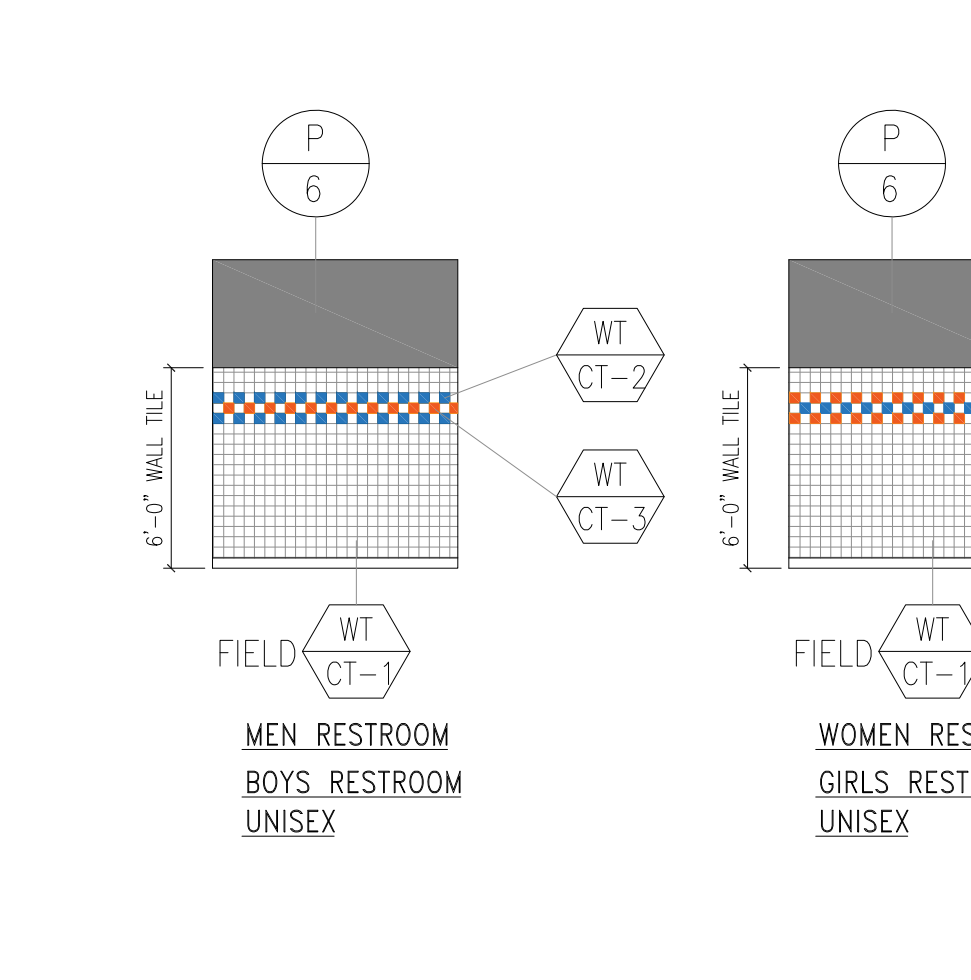
- FIBERGLASS REINFORCED PANEL**
- MFG.: KOROGUARD PROTECTIVE SHEET WALLCOVERING
COLOR: LIGHT GRAY
THICKNESS: 0.060"
LOCATION: JANITOR CLOSET SHEET #124 & #221 ALL WALLS
- CERAMIC TILE (WALLS)**
- MFG.: DALTILE
TYPE: SEMI-GLOSS
COLOR: 0193 ALMOND (1)
SIZE: 4" X 4"
LOCATION: RESTROOM WALLS (FIELD)
- MFG.: DALTILE
TYPE: SEMI-GLOSS
COLOR: 0169-WATERFALL (1)
SIZE: 4" X 4"
LOCATION: RESTROOM WALLS (ACCENT)
SEE RESTROOM TILE PATTERN ELEVATION
- MFG.: DALTILE
TYPE: SEMI-GLOSS
COLOR: 0092 CORAL BEAD (4)
SIZE: 4" X 4"
LOCATION: RESTROOM WALLS (ACCENT)
SEE RESTROOM TILE PATTERN ELEVATION
- EPOXY RESIN**
- MFG.: BURCON
COLOR: FLAT BLACK ONYX
LOCATION: CHEMISTRY TEACHER DEMONSTRATION DESK

- CERAMIC TILE BASE**
- MFG.: DALTILE
TYPE: KEYSTONES
COLOR: D208 SUEDE GRAY SPECKLE
BUILT UP BASE MB-58
SIZE: 2' X 2'
LOCATION: RESTROOM WALLS
- CERAMIC TILE (FLOOR)**
- MFG.: DALTILE
TYPE: KEYSTONES
COLOR: D208 SUEDE GRAY SPECKLE
SIZE: 2' X 2'
LOCATION: RESTROOM FLOORS
- TILE GROUT**
- MFG.: CUSTOM BUILDING PRODUCTS
COLOR: #101 QUARTZ
LOCATION: WALLS
- MFG.: CUSTOM BUILDING PRODUCTS
COLOR: #19 PEWTER
LOCATION: FLOOR & WALL BASE ONLY
- STAIR TREAD/RISER/LANDING**
- MFG.: BURKE UNI-STEP STAIR SYSTEM
COLOR: 010 SHELL GRAY
STYLE: ENDURA FLECKSHIBLES ONE STEP TREAD RISER VISUALLY IMPAIRED COLOR: BRICK
LOCATION: ALL INTERIOR STAIR TREAD/RISER/LANDING

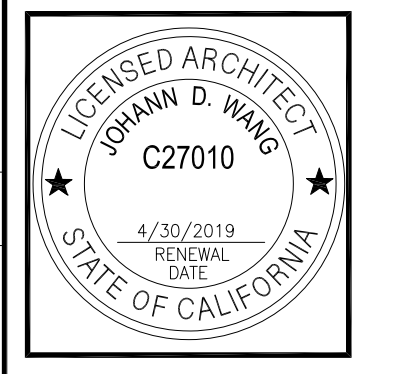
TYPICAL CORRIDOR WALLS



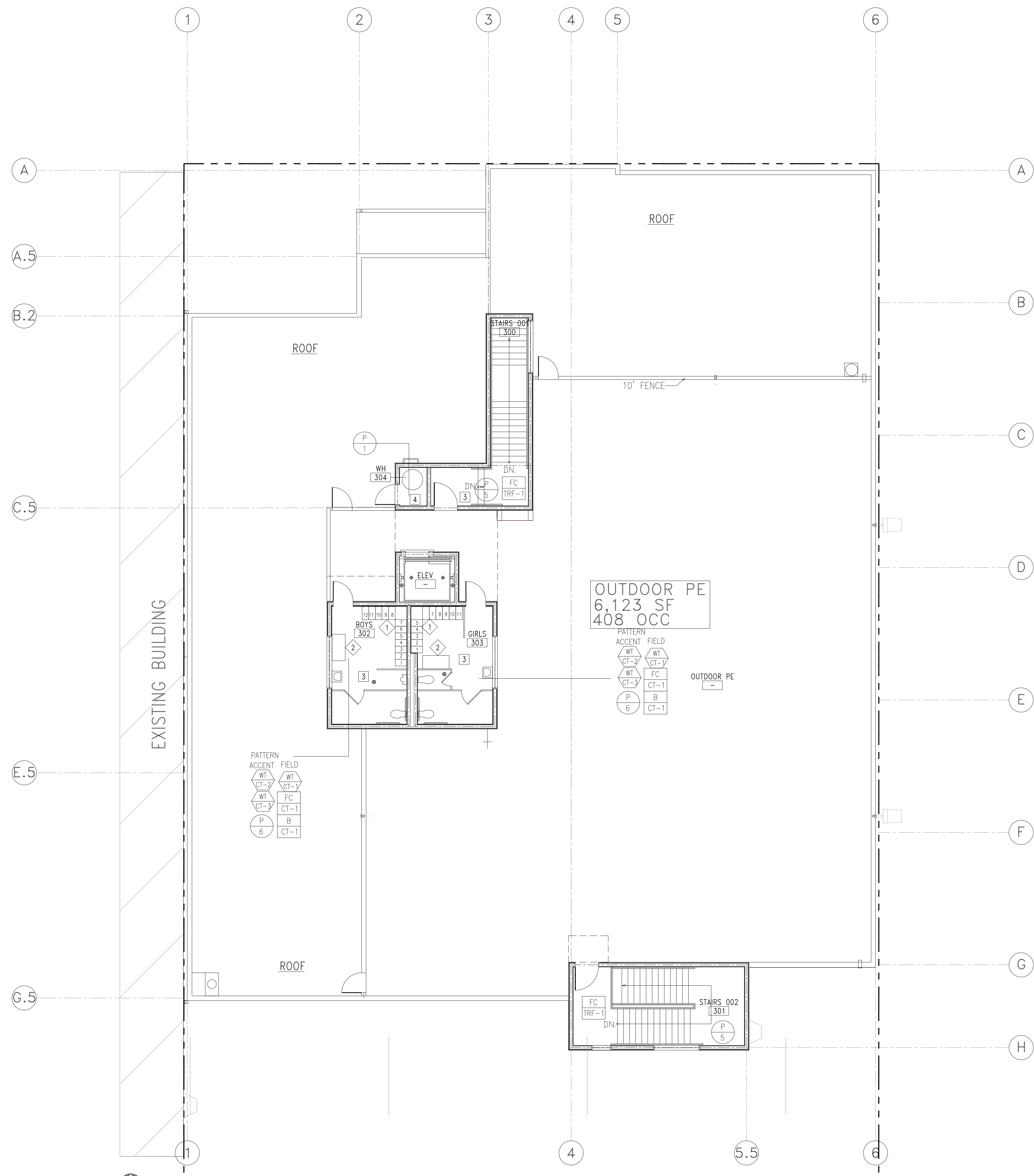
RESTROOM WALL DESIGN DETAIL- TYPICAL



REV	DESCRIPTION	DATE
1	PLAN CHECK #1	6/14/2017
2	PD PLAN CHECK	10/31/2017
3	PD PLAN CHECK	12/14/2017



PROJECT		MAGNOLIA SCIENCE ACADEMY	
PROJECT ADDRESS		18220 SHERMAN WAY, RESEDA, CA 91335	
DESIGN TITLE	DATE	DATE	DATE
SECOND FLOOR FINISH PLAN	02/28/2019		
DRAWN BY	SCALE	DATE	DATE
	AS NOTED		
CHECKED BY			
DATE			



ROOF FINISH PLAN
SCALE: 1/8" = 1'-0"

FINISH SPECIFICATIONS:
PAINT—INTERIOR

P 3 MFG: DUNN EDWARDS
COLOR: DEW341 SWISS COFFEE
FINISH: SEMI GLOSS
LOCATION: WHERE IS SPECIFIED

P 5 MFG: DUNN EDWARDS
COLOR: DEB381 SILVER BULLET
FINISH: SEMI GLOSS
LOCATION: ACCENT—RESTROOMS

RUBBER BASE
MFG: BURKE
TYPE: 4" COVED
COLOR: 660 ROCKY
LOCATION: THROUGHOUT (U.O.N.)

VINYL COMPOSITION TILE
MFG: ARMSTRONG—STANDARD EXCELON
COLOR: 51927 FIELD GRAY
SIZE: 12"x12"
LOCATION: FIELD THROUGHOUT (U.O.N.)

CERAMIC TILE (WALLS)
MFG: DALTILE
TYPE: SEMI-GLOSS
COLOR: 0156 ALMOND (1)
SIZE: 4" x 4"
LOCATION: RESTROOM WALLS (FIELD)

MFG: DALTILE
TYPE: SEMI-GLOSS
COLOR: 016B-WATERFALL (1)
SIZE: 4" x 4"
LOCATION: RESTROOM WALLS (ACCENT)
SEE RESTROOM TILE PATTERN ELEVATION

MFG: DALTILE
TYPE: SEMI-GLOSS
COLOR: 0092 CORAL BEAD (4)
SIZE: 4" x 4"
LOCATION: RESTROOM WALLS (ACCENT)
SEE RESTROOM TILE PATTERN ELEVATION

CERAMIC TILE BASE
MFG: DALTILE
TYPE: KEYSTONES
COLOR: D208 SWIDE GRAY SPECKLE
BUILT UP BASE MB-08
SIZE: 2' x 2'
LOCATION: RESTROOM WALLS

CERAMIC TILE (FLOOR)
MFG: DALTILE
TYPE: KEYSTONES
COLOR: D208 SWIDE GRAY SPECKLE
SIZE: 2' x 2'
LOCATION: RESTROOM FLOORS

TILE GROUT
MFG: CUSTOM BUILDING PRODUCTS
COLOR: #101 QUARTZ
LOCATION: WALLS

MFG: CUSTOM BUILDING PRODUCTS
COLOR: #15 PEWTER
LOCATION: FLOOR & WALL BASE ONLY

STAIR TREAD/RISER/LANDING
MFG: BURKE UNI-STEP STAIR SYSTEM
COLOR: 010 SHELL GRAY
STYLE: ENDURA FLECKSIBLES ONE STEP TREAD RISER
VISUALLY IMPAIRED COLOR: BRICK
LOCATION: ALL INTERIOR STAIR TREAD/RISER/LANDING

LOCKER/BENCH SPECS:

1 MANUFACTURER: HADRIAN
TYPE: FOUR TIER ATHLETIC LOCKERS—72 HIGH
DIMENSION: 12"W x 21"D
MODEL #/COLOR: 609 COLONIAL BLUE FOR BOYS (07Y.12) / 607 BORDEAUX FOR GIRLS (07Y.11)
OPTION: EXPANSION TUB, FLAT TOP CORNER FILLER, DRESS ENDS
INDIVIDUAL GALVANNEAL BOX BASES

2 MANUFACTURER: HADRIAN
TYPE: ADA BENCH OPTION
DIMENSION: 48"L x 24"W
HARDWARE: STATIONARY

SK-018C-R
REF. TRN-093
ROOF FINISH PLAN
2/27/2019

FINISH NOTES

- CONTRACTOR SHALL SUBMIT 8"x8" SAMPLES OF ALL FINISHES TO ARCHITECT FOR APPROVAL AT LEAST 2 WEEKS PRIOR TO INSTALL.
- CONTRACTOR SHALL FOLLOW ALL MANUFACTURERS RECOMMENDATIONS & INSTRUCTIONS FOR THE INSTALL. OF ANY FINISHES OR PRODUCTS.
- ALL MATERIAL AND ITS INSTALLATION SHALL COMPLY W/ ALL BUILDING FIRE & ADA CODES IN EFFECT IN THE CITY OF LOS ANGELES.
- U.O.N. ALL ACCESS DOORS & PANELS SHALL BE PAINTED TO MATCH ADJ. SURFACE COLOR & FINISH.
- G.C. AND THEIR SUBS SHALL BE RESPONSIBLE FOR ANY WALLCOVERING INSTALLATIONS.
- ALL PRIMING & OR SIZING OF WALLS TO RECEIVE WALLCOVERING SHALL BE DONE BY THE SUB CONTRACTOR INSTALLING THE WALLCOVERING.
- CONTRACTOR SHALL SUBMIT A CARPET SEAMING DIAGRAM & DIRECTION OF CARPET TO ARCHITECT AT LEAST 2 WEEKS PRIOR TO INSTALL.
- FLOORING SUB SHALL PRE-INSPECT EXIST. FLOOR SLAB TO CHECK FOR CRACKS & UNEVENNESS. FLOAT FLOORS FOR PROPER INSTALLATIONS OF FLOOR FINISHES AS REQD. CONTRACTOR SHALL INCLUDE ALL COSTS TO PROPERLY PREPARE SLAB FOR SPECIFIED FINISH.
- NO SUBSTITUTIONS OF FINISHES SHALL BE MADE W/OUT PRIOR WRITTEN APPROVAL FROM ARCHITECT.
- PAINT INSIDE FACE OF ANY LIGHT COVERS. FLAT FINISH.
- ALL DRYWALL CEILINGS SHALL BE PREPARED TO RECEIVE FLAT LATEX PAINT FINISH WITHOUT ANY APPARENT SEAMS OR IMPERFECTIONS.
- CABINET SUB CONTRACTOR SHALL BE RESPONSIBLE FOR ALL FINISHES ON CABINETRY AS SHOWN ON MILLWORK PLANS.
- WASH ALL REMAINING FLOORING.
- INTERIOR FINISH SHALL BE PROVIDED IN ACCORDANCE TO TITLE 24, SECTION 804, AS FOLLOWS: CLASS I—VERTICAL ENCLOSURES; CLASS II—CORRIDORS; CLASS III—ROOMS.
ALL DRAPES, HANGINGS, CURTAINS, DROPS AND ALL OTHER DECORATIVE MATERIAL TO COMPLY WITH FIRE CODE SECTION 1103.3.3.
- PROVIDE ANTI-GRAFFITI FINISH AT THE FIRST 9 FEET, MEASURED FROM GRADE, AT EXTERIOR WALLS AND DOORS. (PAINTED SURFACE — LARR #2560IT, UNFINISHED SURFACE — LARR #25286T)
- INTERIOR WALL AND CEILING FINISHES SHALL BE PROVIDED IN ACCORDANCE WITH BUILDING CODE 801 AND TABLE 803.3.
- CURTAINS, DRAPERIES, HANGINGS AND OTHER DECORATIVE MATERIALS SUSPENDED FROM WALLS OR CEILINGS SHALL MEET THE FLAME PROPAGATION PERFORMANCE CRITERIA OF NFPA 701, IN ACCORDANCE WITH BUILDING CODE 806.2 OR BE NONCOMBUSTIBLE. BUILDING CODE 806.1.
- ALL FLOORING TO BE SLIP-RESISTANT PER ADA CODE
- TOILET ROOM FLOORS SHALL HAVE A SMOOTH, HARD NON ABSORBENT SURFACE SUCH AS PORTLAND CEMENT, CERAMIC TILE OR OTHER APPROVED MATERIAL THAT EXTENDS UPWARD ONTO THE WALLS AT LEAST 4" (1210.2.1)
- WALLS WITHIN 2 FEET (610 MM) OF THE FRONT AND SIDES OF URINALS AND WATER CLOSETS SHALL HAVE A SMOOTH, HARD NON-ABSORBENT SURFACE OF PORTLAND CEMENT, CONCRETE, CERAMIC TILE OR OTHER SMOOTH, HARD NON-ABSORBENT SURFACE TO A HEIGHT OF 4 FEET (1219 MM), AND EXCEPT FOR STRUCTURAL ELEMENTS, THE MATERIALS USED IN SUCH WALLS SHALL BE OF A TYPE THAT IS NOT ADVERSELY AFFECTED BY MOISTURE. (1210.2.2)
- CEMENT, FIBER-CEMENT OR GLASS MAT GYPSUM BACKERS IN COMPLIANCE WITH ASTM C1178, C1288 OR C1325 SHALL BE USED AS A BASE FOR WALL TILE IN TUB AND SHOWER AREAS AND WALL AND CEILING PANELS IN SHOWER AREAS. WATER-RESISTANCE GYPSUM BACKING BOARD SHALL BE USED AS A BASE FOR TILE IN WATER CLOSET COMPARTMENT WALLS WHEN INSTALLED IN ACCORDANCE WITH GA-216 OR ASTM C840. REGULAR GYPSUM WALLBOARD IS PERMITTED UNDER TILE OR WALL PANELS IN OTHER WALL AND CEILING AREAS WHEN INSTALLED IN ACCORDANCE WITH GA-216 OR ASTM C840. WATER-RESISTANT GYPSUM BOARD SHALL NOT BE USED IN THE FOLLOWING LOCATIONS: SECTION 2506.1.
a. OVER A VAPOR RETARDER.
b. IN AREAS SUBJECT TO CONTINUOUS HIGH HUMIDITY SUCH AS SAUNAS, STEAM ROOMS OR GANG SHOWER ROOMS.
c. ON CEILING WHERE FRAME SPACING EXCEEDS 12 INCHES O.C. FOR 1/2 INCH THICK AND MORE THAN 16 INCHES O.C. FOR 5/8 INCH THICK.
- EVERY SPACE INTENDED FOR HUMAN OCCUPANCY SHALL BE PROVIDED WITH NATURAL LIGHT BY MEANS OF EXTERIOR GLAZED OPENINGS IN ACCORDANCE WITH SECTION 1205.2 OR SHALL BE PROVIDED WITH ARTIFICIAL LIGHT THAT IS ADEQUATE TO PROVIDE AN AVERAGE ILLUMINATION OF 10 FOOT-CANDELES OVER THE AREA OF THE ROOM AT A HEIGHT OF 30 INCHES ABOVE THE FLOOR LEVEL. (1205.1 AND 1205.3)
- ANY DECORATIONS SHALL BE NONCOMBUSTIBLE OR FLAME-RETARDANT TREATED IN AN APPROVED MANNER (CURTAINS, DRAPES, SHADES, HANGINGS, ETC) (LARC 57.22)

FINISH PLAN NOTES

- INTERIOR FINISH MATERIALS APPLIED TO WALL AND CEILING SHALL BE TESTED AS SPECIFIED IN SECTION 802. OF THE CBC.
- IN JANITOR CLOSET INSTALL FRP 48" AFF AROUND MOP SINK, AND IN ALL WALL AROUND IT
- PROVIDE A LEVEL "5" SMOOTH FINISH FOR ALL DRYWALL
- PROVIDE A LEVEL "3" SMOOTH FINISH FOR ALL DRYWALL
- EXTERIOR STUCCO TO BE TROWEL APPLIED. PROVIDE DUNNE EDWARDS ENDURALASTIC 10 ELASTOMERIC FLAT FINISH PRIOR TO APPLYING FINAL ACRIBOND FLAT PAINT COLOR.

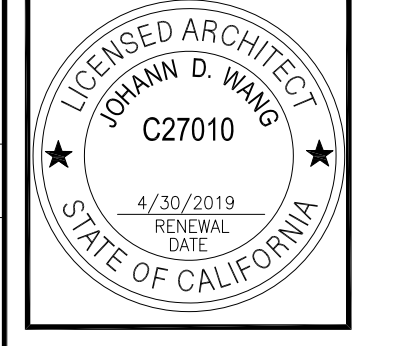
CA GREEN CODE NOTES

- ENVIRONMENTAL QUALITY**
- IF THE HVAC SYSTEM IS USED DURING CONSTRUCTION, PROVIDE RETURN AIR FILTERS WITH A MINIMUM EFFICIENCY REPORTING VALUE (MERV) OF 8, BASED ON ASHRAE 52.2-1999, OR AN AVERAGE EFFICIENCY OF 50 PERCENT, BASED ON ASHRAE 52.1-1992. REPLACE ALL FILTERS PRIOR TO THE CONCLUSION OF CONSTRUCTION.
 - AT THE TIME OF ROUGH INSTALLATION, OR DURING STORAGE ON THE CONSTRUCTION SITE AND UNTIL FINAL STARTUP OF THE HEATING AND COOLING EQUIPMENT, ALL DUCT AND OTHER RELATED AIR DISTRIBUTION COMPONENT OPENINGS SHALL BE COVERED WITH TAPE, PLASTIC, SHEET METAL, OR OTHER ACCEPTABLE METHODS TO REDUCE THE AMOUNT OF DUST OR DEBRIS WHICH MAY COLLECT IN THE SYSTEM. (5.504.3)
 - PROVIDE FINISH PLAN COMPLYING WITH THE FOLLOWING:
 - ADHESIVES, SEALANTS AND CAULKS, PAINTS AND COATINGS, AND AEROSOL PAINTS AND COATINGS SHALL MEET OR EXCEED THE STANDARDS OUTLINED IN SECTIONS 5.504.4.1, 5.504.4.3, AND 5.504.4.3.1 RESPECTIVELY. VERIFICATION OF COMPLIANCE WITH THESE SECTIONS MUST BE PROVIDED AT THE TIME OF INSPECTION.
 - ALL CARPET INSTALLED IN THE BUILDING INTERIOR SHALL MEET THE TESTING AND PRODUCT REQUIREMENTS OF ONE OF THE FOLLOWING: (5.504.4.4)
 - CARPET AND RUG INSTITUTE'S GREEN LABEL PLUS PROGRAM OR
 - CALIFORNIA DEPARTMENT OF PUBLIC HEALTH STANDARD PRACTICE FOR THE TESTING OF VOC'S (SPEC 01350) OR
 - NSF/ANSI 140 AT THE GOLD LEVEL OR
 - SCIENTIFIC CERTIFICATIONS SYSTEMS SUSTAINABLE CHOICE
 - ALL CARPET CUSHION INSTALLED IN THE BUILDING INTERIOR SHALL MEET THE REQUIREMENTS OF THE CARPET AND RUG INSTITUTE GREEN LABEL PROGRAM. CARPET ADHESIVES SHALL NOT EXCEED A VOC LIMIT OF 50 G/L. (5.504.4.4.1, 5.504.4.4.2)
 - COMPOSITE WOOD PRODUCTS (HARDWOOD PLYWOOD, PARTICLE BOARD, AND MDF COMPOSITE WOOD) INSTALLED ON THE INTERIOR OR EXTERIOR OF THE BUILDING SHALL MEET OR EXCEED THE STANDARDS OUTLINED IN TABLE 5.504.4.5. (5.504.4.5)
 - MINIMUM OF 50% OF FLOOR AREA RECEIVING RESILIENT FLOORING SHALL COMPLY WITH THE VOC EMISSION LIMITS DEFINED IN THE CHIPS LOW-EMITTING MATERIALS LIST OR CERTIFIED UNDER THE RFCI FLOORSCORE PROGRAM. VERIFICATION OF COMPLIANCE WITH THESE SECTIONS MUST BE PROVIDED AT THE TIME OF INSPECTION. (5.504.4.6)

RESTROOM WALL DESIGN DETAIL— TYPICAL



REV	DESCRIPTION	DATE
1	PLAN CHECK #1	6/14/2017
2	PD PLAN CHECK	10/31/2017
3	PD PLAN CHECK	12/14/2017



PROJECT	MAGNOLIA SCIENCE ACADEMY
PROJECT ADDRESS	18220 SHERMAN WAY, RESEDA, CA 91335
DRAWING TITLE	ROOF FINISH PLAN
DATE	02/28/2019
SCALE	AS NOTED
DRAWING NUMBER	A3.5