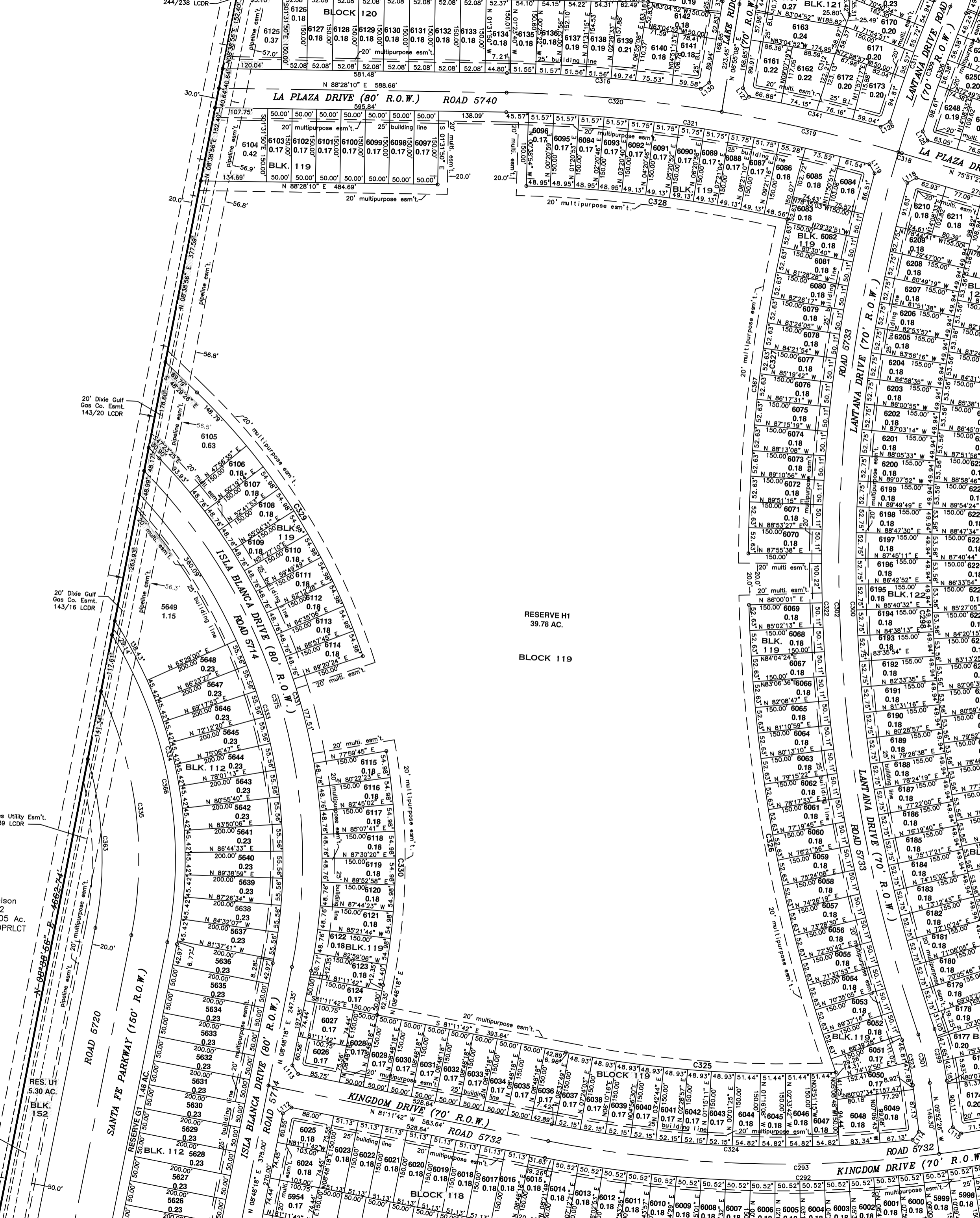


01

Authorize administration to close on two additional parcels of donated land for MSG Ramirez K-8 and Liberty HS in Cleveland, Texas to accommodate needed groundwater control - Santa Fe 8, Lots 6046 and 6086 adjoining Reserve H1 (second lot subject to change to 6087, 6088, or 6082).



LA PLAZA DRIVE (80' R.O.W.) ROAD 5740

ISLA BLANCA DRIVE (80' R.O.W.) ROAD 5714

KINGDOM DRIVE (70' R.O.W.) ROAD 5732

KINGDOM DRIVE (70' R.O.W.) ROAD 5732

RESERVE H1
39.78 AC.
BLOCK 119

SANTA FE PARKWAY (150' R.O.W.) ROAD 5720

LANTANA DRIVE (70' R.O.W.) ROAD 5733

LANTANA DRIVE (70' R.O.W.) ROAD 5733

RESERVE G1
1.48 AC.

RES. U1
5.30 AC.

BLK. 152

BLK. 112

BLK. 112

BLK. 112

BLK. 112

BLK. 112

BLK. 112

BLK. 112

BLK. 112

BLK. 112

BLK. 112

BLK. 112

BLK. 112

BLK. 112

BLK. 112

BLK. 112

BLK. 112

BLK. 112

BLK. 112

BLK. 112

BLK. 112

BLK. 112

BLK. 112

BLK. 112

BLK. 112

BLK. 112

BLK. 112

BLK. 112

BLK. 112

BLK. 112

BLK. 112

BLK. 112

BLK. 112

BLK. 112

BLK. 112

BLK. 112

BLK. 112

BLK. 112

BLK. 112

BLK. 112

BLK. 112

BLK. 112

BLK. 112

BLK. 112

BLK. 112

BLK. 112

BLK. 112

BLK. 112

BLK. 112

BLK. 112

BLK. 112

BLK. 112