

**03**

Authorize administration to contract with Pref-Tech for Windmill Lakes-Orem HS MCJROTC access control for \$38,340.40 and not to exceed \$45,000 with change orders.

# Proposal



To:  
**Charles Klein**  
**International Leadership of Texas**  
1651 N. Glenville Dr., Ste. 216  
Richardson, TX 75081

Submitted by:

**Preferred Technologies, LLC**  
3709 Promontory Point Drive, Ste. 106  
Austin, TX 78744  
Telephone: (281) 442-0550  
Facsimile: (281) 449-5597

Title: International Leadership of Texas, Windmill Lakes JROTC Access Control

Contract Number: DIR-CPO-4742

Date Submitted: 7/11/2022

Point of Contact: Alan Ham  
*Sales and Design Professional*

Proposal Amount: \$38,340.40

Signed:

---

Alan Ham  
*Sales and Design Professional*  
Preferred Technologies, LLC  
(346) 262-3792  
[alanham@pref-tech.com](mailto:alanham@pref-tech.com)



## Overview

Preferred Technologies, LLC. (Pref-Tech) will add access control doors for International Leadership of Texas at their Windmill Lakes JROTC facility. Pref-Tech's work will be compliant with manufacturer requirements, applicable codes, and the highest industry standards.

## Scope of Work

Preferred Technologies, LLC. will perform the following tasks:

- Head End Equipment and Licensing
  - Pref-Tech will provide and install (1) Genetec Streamvault SV-2020E-R4-48T-16-236 Server appliance inside of the IDF. This server will operate as the archiver for the VMS. The HQ directory and access manager will be utilized to operate this facility.
    - This server will require a data drop which will be provided by others.
  - Pref-Tech will provide and configure (6) Genetec access control door licenses to bring doors into Genetec Synergis.
  - Pref-Tech will provide and configure (13) Genetec camera connection licenses to bring cameras into Genetec Omnicast.
  - Pref-Tech will provide and install (1) Life Safety Power Unified 8-door Access Control Enclosure. This enclosure will be equipped with the following:
    - (1) Genetec Cloudlink G2
    - (1) Mercury LP1502 Intelligent Controller
    - (2) Mercury MR52 Reader Boards
- Pref-Tech will provide and install (5) access control doors. (4) of these doors will be single doors and (1) will be a double door.
  - Single Door
    - Each single door will be equipped with the following:
      - (1) Request-to-exit motion sensor
      - (1) Recessed door contact
      - Proper Resistance
      - Composite cabling to support power to the door devices
      - Note: The door hardware includes an integrated HID card reader that will facilitate card reads to allow/deny access. Pref-Tech will coordinate with door hardware contractor to complete installation of the devices above.
  - Double Door
    - The double door will be equipped with the following:
      - (1) Request-to-exit motion sensor
      - (2) Recessed door contacts
      - Proper Resistance
      - Composite cabling to support power to the door devices
      - Note: The door hardware includes an integrated HID card reader that will facilitate card reads to allow/deny access. Pref-Tech will coordinate with door hardware contractor to complete installation of the devices above.



- Pref-Tech will provide and install (2) monitored doors. (1) of these doors will be a single door and (1) will be a double door.
  - Single Door
    - Each single door will be equipped with the following:
      - (1) Recessed door contact
      - Proper Resistance
      - Composite cabling to support power to the door devices
  - Double Door
    - The double door will be equipped with the following:
      - (2) Recessed door contacts
      - Proper Resistance
      - Composite cabling to support power to the door devices
- Pref-Tech will provide and install (2) Bosch DS9370 360-degree motion sensors.
  - The motions will be connected to the auxiliary inputs on the reader boards.
  - Pref-Tech will program an event-to-action in Genetec to send an alarm to the site administrator of IL Texas' choosing.
- Pref-Tech Labor Service
  - Pref-Tech will provide project management services to include proper project facilitation and close out documentation to International Leadership of Texas.
  - Pref-Tech will provide programming services to properly configure the server, configure doors, and bring the cameras into Genetec Omnicast.

## Assumptions

The below assumptions were applied when pricing this project. The pricing in this proposal is contingent upon the validity of these assumptions. Additional charges may result if these assumptions be found false.

- Pref-Tech's work is limited to the installation of the bill of materials listed in the Pricing Sheet.
- Others will provide all required 120VAC power.
- Others will provide all necessary network access, server and workstation permissions, and IP information.
- Others will provide physical access to all work locations.
- Others will provide necessary wall space.
- Others will provide necessary rack space.
- Doors are prepared and read for door devices prior to date of installation.
- All data drops are provided by others.
- All material shipments will be standard ground. If expedited shipping is required, then extra charges may apply.
- Taxes are excluded. If taxes apply, then Pref-Tech will apply the required taxes to each invoice.



# Bill of Material

DIR ITEM TYPE	MANUF	PART NUMBER	DESCRIPTION	QTY OF KITS	QTY PER KIT	TOTAL QTY	UNIT	MSRP			DISCOUNT		SUBTOTAL		DIR FEE		TOTAL	
								UNIT MSRP	TOTAL MSRP	% OFF MSRP	UNIT RETAIL	TOTAL RETAIL	DIR FEE %	DIR FEE TOTAL	DIR FEE TOTAL	DIR UNIT RETAIL	DIR TOTAL RETAIL	
DIR KIT	PREFERRED TECHNOLOGIES, LLC	ILT-WL-WL-JR0TC-07112022	DIR KIT WL-JR0TC	1.00	NA	1.00	EA	\$ 43,352.03	\$ 43,352.03	15.00%	\$ 36,849.74	\$ 36,849.74	0.75%	\$ 276.37	\$ 276.37	\$ 37,126.11	\$ 37,126.11	
<b>GENETEC SOFTWARE AND LICENSING</b>																		
DIR KIT COMPONENT			<b>SYNERGIS</b>															
DIR KIT COMPONENT	GENETEC	GSC-EDU-SY-1R	1 SYNERGIS EDUCATION READER CONNECTION FOR K12. MUST PURCHASE SYNERGIS™ EDUCATION K12 PACKAGE (GSC-EDU-SY-BASE) INCLUDES GENETEC™ ADVANTAGE FOR 1 SYNERGIS EDUCATION READER CONNECTION FOR K12 - 5 YEARS.	NA	6.00	6.00	EA	\$ -	\$ -	28.50%	\$ -	\$ -	0.75%	\$ -	\$ -	\$ -	\$ -	
DIR KIT COMPONENT			<b>OMNICAST</b>															
DIR KIT COMPONENT	GENETEC	GSC-EDU-OM-1C	1 OMNICAST EDUCATION CAMERA CONNECTION FOR K12. MUST PURCHASE OMNICAST™ EDUCATION K12 PACKAGE (GSC-EDU-OM-BASE) INCLUDES GENETEC™ ADVANTAGE FOR 1 OMNICAST EDUCATION CAMERA CONNECTION FOR K12 - 5 YEARS.	NA	13.00	13.00	EA	\$ -	\$ -	28.50%	\$ -	\$ -	0.75%	\$ -	\$ -	\$ -	\$ -	
DIR KIT COMPONENT			<b>STREAMVAULT</b>															
DIR KIT COMPONENT	GENETEC	SV-2020E-R4-40T-16-236	STREAMVAULT™ 2020E SERIES - 1U 4-BAY APPLIANCE (8TB RAW RAID 5, 1X HDD E-2208, 16GB RAM 2X 240GB M.2 SSD 3X 10TB NLSAS 2X 1GBE RJ45 2X 350W PSU WINDOW'S SERVER 2019 STANDARD 5YR NBD KYHD WARRANTY - GENETEC™ SECURITY CENTER PRE-INSTALLED. LICENSE SOLD SEPARATELY.	NA	1.00	1.00	EA	\$ -	\$ -	28.50%	\$ -	\$ -	0.75%	\$ -	\$ -	\$ -	\$ -	
<b>ACS HEAD END EQUIPMENT</b>																		
DIR KIT COMPONENT			<b>LIFESAFETY POWER - 800 MERCURY, 12V &amp; 24V, 150W MAX. ESM ENCLOSURE 30H X 23W X 6.5D. NETWORK MANAGED.</b>	NA	1.00	1.00	EA	\$ -	\$ -	0.00%	\$ -	\$ -	0.75%	\$ -	\$ -	\$ -	\$ -	
DIR KIT COMPONENT	LSP	FP0150-B100DPMNL4E6M		NA	1.00	1.00	EA	\$ -	\$ -	0.00%	\$ -	\$ -	0.75%	\$ -	\$ -	\$ -	\$ -	
DIR KIT COMPONENT	GENETEC	SY-CLOUDLINK-G2	SYNERGIS™ CLOUD LINK WITH 8GB OF RAM, 16GB FLASH SECOND GENERATION, INSTALLED WITH SYNERGIS™ ACCESS CONTROL FIRMWARE, FOUR RS-485 PORTS, 3YR.	NA	1.00	1.00	EA	\$ -	\$ -	28.50%	\$ -	\$ -	0.75%	\$ -	\$ -	\$ -	\$ -	
DIR KIT COMPONENT	MERCURY	SY-LP1502-SCS	MERCURY INTELLIGENT CONTROLLER, LINUX BASED, (BIN4OUT)2RD (SOFTWARE CONNECTIONS INCLUDED).	NA	1.00	1.00	EA	\$ -	\$ -	0.00%	\$ -	\$ -	0.75%	\$ -	\$ -	\$ -	\$ -	
DIR KIT COMPONENT	MERCURY	SY-MRS2-S3-SCS	MERCURY MRS2-READER INTERFACE MODULE SERIES 3 (8 INPUTS, 6 RELAYS, PCB ONLY, SOFTWARE CONNECTIONS INCLUDED).	NA	2.00	2.00	EA	\$ -	\$ -	0.00%	\$ -	\$ -	0.75%	\$ -	\$ -	\$ -	\$ -	
DIR KIT COMPONENT	PREF-TECH	PT-MISC-ACS	MISCELLANEOUS CONSUMABLES TO INSTALL HEAD END ACS EQUIPMENT	NA	1.00	1.00	EA	\$ -	\$ -	0.00%	\$ -	\$ -	0.75%	\$ -	\$ -	\$ -	\$ -	
DIR KIT COMPONENT	PREF-TECH	PT-TECH-LABOR	LABOR TO INSTALL HEAD END ACS EQUIPMENT	NA	1.00	1.00	EA	\$ -	\$ -	0.00%	\$ -	\$ -	0.75%	\$ -	\$ -	\$ -	\$ -	
<b>DOOR PORTAL EQUIPMENT</b>																		
DIR KIT COMPONENT			<b>ACS PORTALS - SINGLE DOOR</b>															
DIR KIT COMPONENT	DITEK	DTK-4LVLPCR	4 PAIR CARD READER SURGE PROTECTION- 1 PAIR EACH 12V POWER, 24V POWER, 5V DATA, 1V SIGNAL.	NA	4.00	4.00	EA	\$ -	\$ -	0.00%	\$ -	\$ -	0.75%	\$ -	\$ -	\$ -	\$ -	
DIR KIT COMPONENT	BOSCH	DS150I	BOSCH REQUEST TO EXIT SENSOR	NA	4.00	4.00	EA	\$ -	\$ -	0.00%	\$ -	\$ -	0.75%	\$ -	\$ -	\$ -	\$ -	
DIR KIT COMPONENT	MAGNASPHERE	MSS-302C-W	1" RECESSED STEEL DOOR CONTACT	NA	4.00	4.00	EA	\$ -	\$ -	0.00%	\$ -	\$ -	0.75%	\$ -	\$ -	\$ -	\$ -	
DIR KIT COMPONENT	GRI GEORGE	6644	RESISTOR	NA	4.00	4.00	EA	\$ -	\$ -	0.00%	\$ -	\$ -	0.75%	\$ -	\$ -	\$ -	\$ -	
DIR KIT COMPONENT	PREF-TECH	PT-MISC-DP	MISCELLANEOUS HARDWARE TO INSTALL DOOR PORTAL EQUIPMENT	NA	4.00	4.00	EA	\$ -	\$ -	0.00%	\$ -	\$ -	0.75%	\$ -	\$ -	\$ -	\$ -	
DIR KIT COMPONENT	PREF-TECH	PT-TECH-LABOR	TECHNICIAN LABOR TO INSTALL SINGLE DOOR PORTAL EQUIPMENT W/ READERS	NA	4.00	4.00	EA	\$ -	\$ -	0.00%	\$ -	\$ -	0.75%	\$ -	\$ -	\$ -	\$ -	
DIR KIT COMPONENT	PREF-TECH	PT-DOOR-COORD	DOOR COORDINATION WITH DIVISION 8 CONTRACTOR	NA	4.00	4.00	EA	\$ -	\$ -	0.00%	\$ -	\$ -	0.75%	\$ -	\$ -	\$ -	\$ -	
DIR KIT COMPONENT			<b>ACS PORTALS - DOUBLE DOOR</b>															
DIR KIT COMPONENT	DITEK	DTK-4LVLPCR	4 PAIR CARD READER SURGE PROTECTION- 1 PAIR EACH 12V POWER, 24V POWER, 5V DATA, 1V SIGNAL.	NA	1.00	1.00	EA	\$ -	\$ -	0.00%	\$ -	\$ -	0.75%	\$ -	\$ -	\$ -	\$ -	
DIR KIT COMPONENT	BOSCH	DS150I	BOSCH REQUEST TO EXIT SENSOR	NA	1.00	1.00	EA	\$ -	\$ -	0.00%	\$ -	\$ -	0.75%	\$ -	\$ -	\$ -	\$ -	
DIR KIT COMPONENT	MAGNASPHERE	MSS-302C-W	1" RECESSED STEEL DOOR CONTACT	NA	2.00	2.00	EA	\$ -	\$ -	0.00%	\$ -	\$ -	0.75%	\$ -	\$ -	\$ -	\$ -	
DIR KIT COMPONENT	GRI GEORGE	6644	RESISTOR	NA	1.00	1.00	EA	\$ -	\$ -	0.00%	\$ -	\$ -	0.75%	\$ -	\$ -	\$ -	\$ -	
DIR KIT COMPONENT	PREF-TECH	PT-MISC-DP	MISCELLANEOUS HARDWARE TO INSTALL DOOR PORTAL EQUIPMENT	NA	1.00	1.00	EA	\$ -	\$ -	0.00%	\$ -	\$ -	0.75%	\$ -	\$ -	\$ -	\$ -	
DIR KIT COMPONENT	PREF-TECH	PT-TECH-LABOR	TECHNICIAN LABOR TO INSTALL DOUBLE DOOR PORTAL EQUIPMENT W/ READERS	NA	1.00	1.00	EA	\$ -	\$ -	0.00%	\$ -	\$ -	0.75%	\$ -	\$ -	\$ -	\$ -	
DIR KIT COMPONENT	PREF-TECH	PT-DOOR-COORD	DOOR COORDINATION WITH DIVISION 8 CONTRACTOR	NA	1.00	1.00	EA	\$ -	\$ -	0.00%	\$ -	\$ -	0.75%	\$ -	\$ -	\$ -	\$ -	
DIR KIT COMPONENT			<b>DOOR CONTACT ONLY - SINGLE DOOR</b>															
DIR KIT COMPONENT	MAGNASPHERE	MSS-302C-W	1" RECESSED STEEL DOOR CONTACT	NA	1.00	1.00	EA	\$ -	\$ -	0.00%	\$ -	\$ -	0.75%	\$ -	\$ -	\$ -	\$ -	
DIR KIT COMPONENT	GRI GEORGE	6644	RESISTOR	NA	1.00	1.00	EA	\$ -	\$ -	0.00%	\$ -	\$ -	0.75%	\$ -	\$ -	\$ -	\$ -	
DIR KIT COMPONENT	PREF-TECH	PT-MISC-DP	MISCELLANEOUS HARDWARE TO INSTALL DOOR PORTAL EQUIPMENT	NA	1.00	1.00	EA	\$ -	\$ -	0.00%	\$ -	\$ -	0.75%	\$ -	\$ -	\$ -	\$ -	
DIR KIT COMPONENT	PREF-TECH	PT-TECH-LABOR	TECHNICIAN LABOR TO INSTALL SINGLE DOOR PORTAL EQUIPMENT W/ DOOR CONTACTS ONLY	NA	1.00	1.00	EA	\$ -	\$ -	0.00%	\$ -	\$ -	0.75%	\$ -	\$ -	\$ -	\$ -	
DIR KIT COMPONENT	PREF-TECH	PT-DOOR-COORD	DOOR COORDINATION WITH DIVISION 8 CONTRACTOR	NA	1.00	1.00	EA	\$ -	\$ -	0.00%	\$ -	\$ -	0.75%	\$ -	\$ -	\$ -	\$ -	



DOOR CONTACT ONLY - DOUBLE DOOR																	
DIR KIT COMPONENT	MAGNASPHERE	MSS-302C-W	1" RECESSED STEEL DOOR CONTACT	NA	2.00	2.00	EA	\$ -	\$ -	0.00%	\$ -	\$ -	0.75%	\$ -	\$ -	\$ -	\$ -
DIR KIT COMPONENT	GRV GEORGE	6844	RESISTOR	NA	1.00	1.00	EA	\$ -	\$ -	0.00%	\$ -	\$ -	0.75%	\$ -	\$ -	\$ -	\$ -
DIR KIT COMPONENT	PREF-TECH	PT-MISC-DP	MISCELLANEOUS HARDWARE TO INSTALL DOOR PORTAL EQUIPMENT	NA	1.00	1.00	EA	\$ -	\$ -	0.00%	\$ -	\$ -	0.75%	\$ -	\$ -	\$ -	\$ -
DIR KIT COMPONENT	PREF-TECH	PT-TECH-LABOR	TECHNICIAN LABOR TO INSTALL DOUBLE DOOR PORTAL EQUIPMENT W/ DOOR CONTACTS ONLY	NA	1.00	1.00	EA	\$ -	\$ -	0.00%	\$ -	\$ -	0.75%	\$ -	\$ -	\$ -	\$ -
DIR KIT COMPONENT	PREF-TECH	PT-DOOR-COORD	DOOR COORDINATION WITH DIVISION 8 CONTRACTOR	NA	1.00	1.00	EA	\$ -	\$ -	0.00%	\$ -	\$ -	0.75%	\$ -	\$ -	\$ -	\$ -
EDGE DEVICES																	
DIR KIT COMPONENT			MOTION DETECTOR 360 DEGREE														
DIR KIT COMPONENT	BOSCH	D89370	MOTION DETECTOR 360 CEILING MOUNT	NA	2.00	2.00	EA	\$ -	\$ -	0.00%	\$ -	\$ -	0.75%	\$ -	\$ -	\$ -	\$ -
DIR KIT COMPONENT	PREF-TECH	PT-MISC-MD	MISCELLANEOUS CONSUMABLES SCREWS, TOGGLES, ANCHORS, FITTINGS,	NA	2.00	2.00	EA	\$ -	\$ -	0.00%	\$ -	\$ -	0.75%	\$ -	\$ -	\$ -	\$ -
CABLING AND CONSUMABLES																	
DIR KIT COMPONENT	WCW	4461050	4 ELEMENT ACCESS CONTROL CABLE 18-04 + 22-3P + 22-02 + 22-04 PLENUM PURPLE JACKS	NA	1000.00	1000.00	FT	\$ -	\$ -	0.00%	\$ -	\$ -	0.75%	\$ -	\$ -	\$ -	\$ -
DIR KIT COMPONENT	WCW	4423650	18-04 UNS STR CMP PUR JKT	NA	1000.00	1000.00	FT	\$ -	\$ -	0.00%	\$ -	\$ -	0.75%	\$ -	\$ -	\$ -	\$ -
DIR KIT COMPONENT	PREF-TECH	PT-CABLE-LABOR	TECHNICIAN LABOR FOR CABLE RUNS	NA	1.00	1.00	EA	\$ -	\$ -	0.00%	\$ -	\$ -	0.75%	\$ -	\$ -	\$ -	\$ -
DIR KIT COMPONENT			CONSUMABLES														
DIR KIT COMPONENT	ARLINGTON	TL20	2' CABLING LOOP	NA	200.00	200.00	EA	\$ -	\$ -	0.00%	\$ -	\$ -	0.75%	\$ -	\$ -	\$ -	\$ -
DIR KIT COMPONENT	HILTI	2149820	WIRE HANGERS, PCK100	NA	2.00	2.00	EA	\$ -	\$ -	0.00%	\$ -	\$ -	0.75%	\$ -	\$ -	\$ -	\$ -
DIR KIT COMPONENT	3M	7100169254	ELECTRICAL TAPE	NA	2.00	2.00	EA	\$ -	\$ -	0.00%	\$ -	\$ -	0.75%	\$ -	\$ -	\$ -	\$ -
DIR KIT COMPONENT	VELCRO	31086	3/4" VELCRO 75 FT	NA	4.00	4.00	EA	\$ -	\$ -	0.00%	\$ -	\$ -	0.75%	\$ -	\$ -	\$ -	\$ -
DIR KIT COMPONENT	ARLINGTON	430	JET LINE	NA	0.50	0.50	EA	\$ -	\$ -	0.00%	\$ -	\$ -	0.75%	\$ -	\$ -	\$ -	\$ -
PERMITTING																	
DIR KIT COMPONENT	PREF-TECH	PT-DOC	DOCUMENTATION	NA	1.00	1.00	EA	\$ -	\$ -	0.00%	\$ -	\$ -	0.75%	\$ -	\$ -	\$ -	\$ -
DIR KIT COMPONENT	PREF-TECH	PT-PJCT	PROJECT MANAGEMENT & CX	NA	1.00	1.00	EA	\$ -	\$ -	0.00%	\$ -	\$ -	0.75%	\$ -	\$ -	\$ -	\$ -
DIR KIT COMPONENT	PREF-TECH	PT-PRG	PROGRAMMING	NA	1.00	1.00	EA	\$ -	\$ -	0.00%	\$ -	\$ -	0.75%	\$ -	\$ -	\$ -	\$ -
DIR KIT COMPONENT	PREF-TECH	PT-PERM-FEES	PERMITTING FEES	NA	1.00	1.00	EA	\$ -	\$ -	0.00%	\$ -	\$ -	0.75%	\$ -	\$ -	\$ -	\$ -
DIR MATERIAL	PREF-TECH	ILT-WL-LIFT-07152022	EQUIPMENT														
			LIFT	NA	NA	1.00	WK	\$ 1,205.25	\$ 1,205.25	0.00%	\$ 1,205.25	\$ 1,205.25	0.75%	\$ 9.04	\$ 9.04	\$ 1,214.29	\$ 1,214.29
								<b>MSRP TOTAL</b>					<b>SUB TOTAL</b>				
								\$ 44,557.88					\$ 38,054.99				
												<b>DIR FEE</b>			<b>TOTAL</b>		
												\$ 285.41			\$ 38,340.40		



## *Acceptance of Proposal*

The Pref-Tech team thanks you for allowing us the opportunity to work with you on this project. To accept this proposal and allow Pref-Tech to proceed with the scope of work outlined above, please sign below and fax or email to your account executive.

My signature below constitutes acceptance of this proposed scope of work and the Terms and Conditions provided.

---

Signature

---

Name and Title

---

Company

---

Date



## Terms and Conditions

**This proposal is valid for 30 days.**

**This Proposal is subject to change based on unknown items that may occur as result of COVID-19** such as material delays, labor shortages, jobsite disruptions or governmental intervention. Even as the US is experiencing a wind-down, manufactures and production facilities are feeling the impacts limited by international imports (such as chip shortages), health and safety concerns, as well as economic impacts to their business. Lead times and production may be extended without warning. Projects with critical completion schedules should be coordinated with your **Pref-Tech SDP**.

### **Invoicing:**

- **Pref-Tech will Order and Invoice for 100% of the materials for the total contract amount.** This includes (but is not limited to) all material, software, consumables, and other items deemed necessary for the project.
- **Customer expressly allows Pref-Tech to invoice for stored materials.** Pref-Tech will store materials at the customer location or in the Pref-Tech bonded and insured warehouse and provide backup documentation with inventories by part number, pictures, etc., as requested by the Customer.
- **Customer expressly allows Pref-Tech to submit progressive invoices based upon completed work percentage or other production milestone.**

Payment terms are NET 30 days from the date of invoice. Past due amounts shall incur interest at 8% per annum, accrued daily from the date due (NET 30) until paid in full.

Pref-Tech may elect to preserve our right to perfect a bond or lien by sending notices in accordance with statutory requirements.

Any change to the scope of work or materials described in this proposal involving extra cost will only be effective upon the execution of a written change order by involved parties.

Pricing is conditional upon unrestricted access to all applicable areas where work is to be performed or access to and from areas where work is to be performed. Unless otherwise noted, the scope of work shown in this proposal is to be performed without delays. Additional trip charges may apply if delays caused by reasons outside of Pref-Tech's control are incurred.

Pref-Tech will guarantee all material and workmanship for a period of one year from the completion of the work included in this proposal. The warranty will commence upon final project acceptance and will terminate the 365<sup>th</sup> day beyond the date of final acceptance, regardless of warranty work conducted during the warranty period. The Owner is responsible for troubleshooting and identifying faults covered under this warranty. Additional fees may apply if Pref-Tech must troubleshoot issues for the Owner and/or if, during the course acting on a warranty request, Pref-Tech determines that the issue was not generated by failures in material or workmanship. Except for the foregoing warranty, Preferred Technologies specifically disclaims all other warranties, express or implied, including but not limited to the warranties of merchantability and of fitness for a particular purpose.

Pref-Tech shall not be liable for any special, consequential, incidental or exemplary damages or loss. Pref-Tech will not be responsible for equipment or parts which are in disrepair due to misuse, accident or mishandled by others not authorized to service this equipment during our agreement time. Pref-Tech will not be responsible for damages caused by fire, the elements, civil commotion, and malicious mischief, negligence of the customer, its agents or acts of God.

This proposal is the property of Pref-Tech. It is not for publication and is issued expressly on the condition that it is not to be copied, reprinted or reproduced in any manner; nor is it to be disclosed to any third party, either wholly or in part without the express written consent of Pref-Tech.





- 1 DATA CABLE FOR EXTERIOR WALL MOUNTED VIDEO SURVEILLANCE CAMERA. DATA CABLE SHALL BE TERMINATED WITH A SURFACE MOUNTED BOX. PROVIDE PATCH CABLE TO CAMERA. REFER TO SECURITY DRAWINGS FOR EXACT LOCATION AND CONDUIT ROUGH-IN REQUIREMENTS.
- 2 DATA CABLE FOR INTERIOR CEILING / WALL MOUNTED VIDEO SURVEILLANCE CAMERA. DATA CABLE SHALL BE TERMINATED WITH A SURFACE MOUNTED BOX. PROVIDE PATCH CABLE TO CAMERA. REFER TO SECURITY DRAWINGS FOR EXACT LOCATION AND CONDUIT ROUGH-IN REQUIREMENTS.
- 3 DATA CABLE FOR WIRELESS ACCESS POINT. DATA CABLE SHALL BE TERMINATED WITH A SURFACE MOUNTED. PROVIDE PATCH CABLE TO WIRELESS ACCESS POINT. OWNER PROVIDED / CONTRACTOR INSTALLED WAP.
- 4 DATA CABLE WITH 20 FEET OF SLACK TERMINATED TO FACERPLATE BEHIND DISPLAY REFER TO AUDIOVISUAL DRAWINGS FOR EXACT LOCATION AND CONDUIT ROUGH-IN REQUIREMENTS.
- 5 ROUGH-IN FOR AIR RIFLE RANGE SYSTEM.
- 6 EXISTING FIBER TERMINATION LOCATION. CONTRACTOR TO PROVIDE 12 STRANDS OM4 TO NEW IDF LOCATION AND TERMINATE ON NEW FIBER PATCH PANEL.

PIVOT NORTH ARCHITECTURE, PLLC.  
1101 W. GROVE STREET  
BOISE, ID 83702  
www.pivotnorthdesign.com

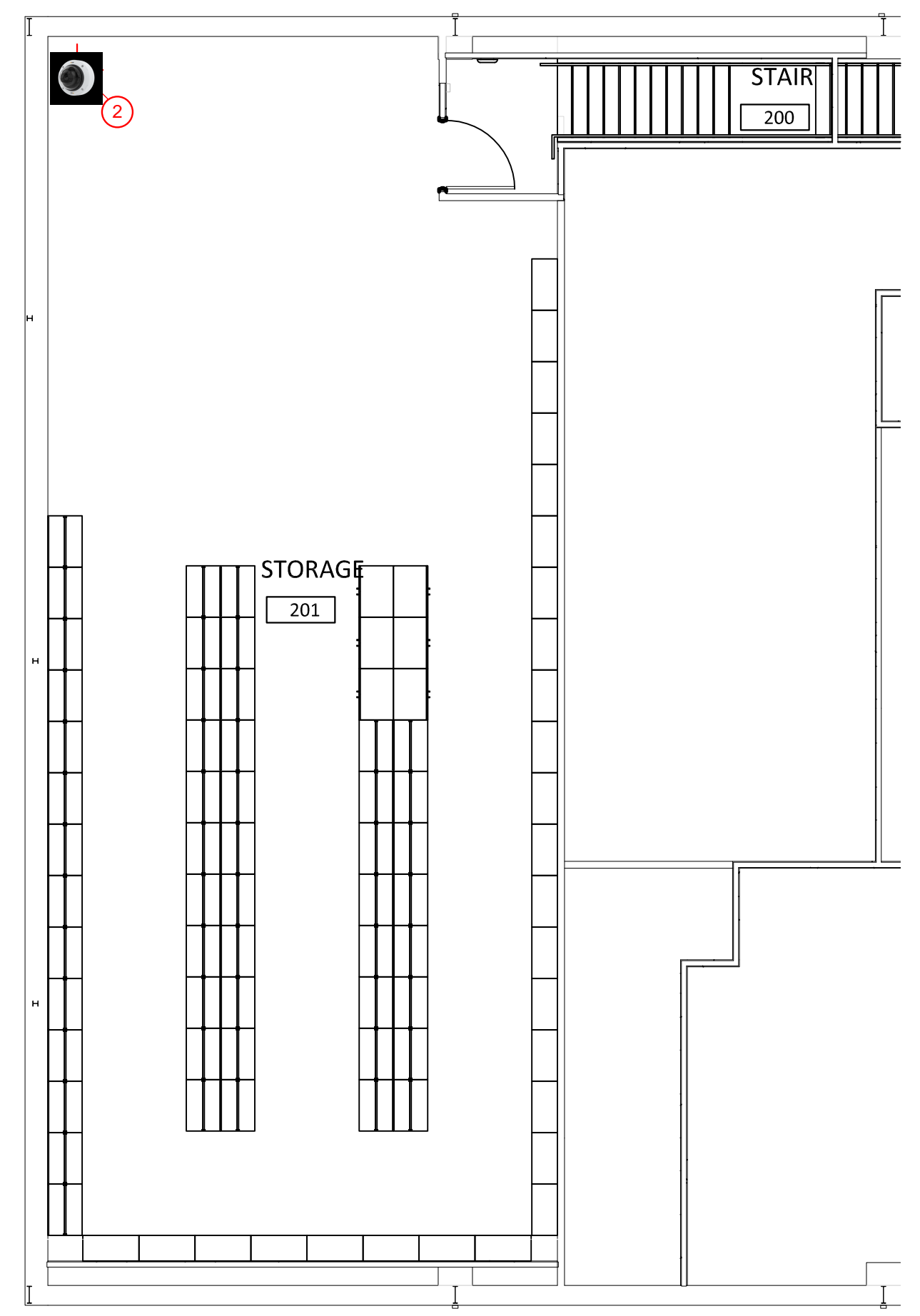
STAMP  
:

Project:  
IL TEXAS WINDMILL LAKES-OREM HS - PHASE 6 - NEW SCHOOL  
9901 WINDMILL LAKES BLVD, HOUSTON, TEXAS, 77075

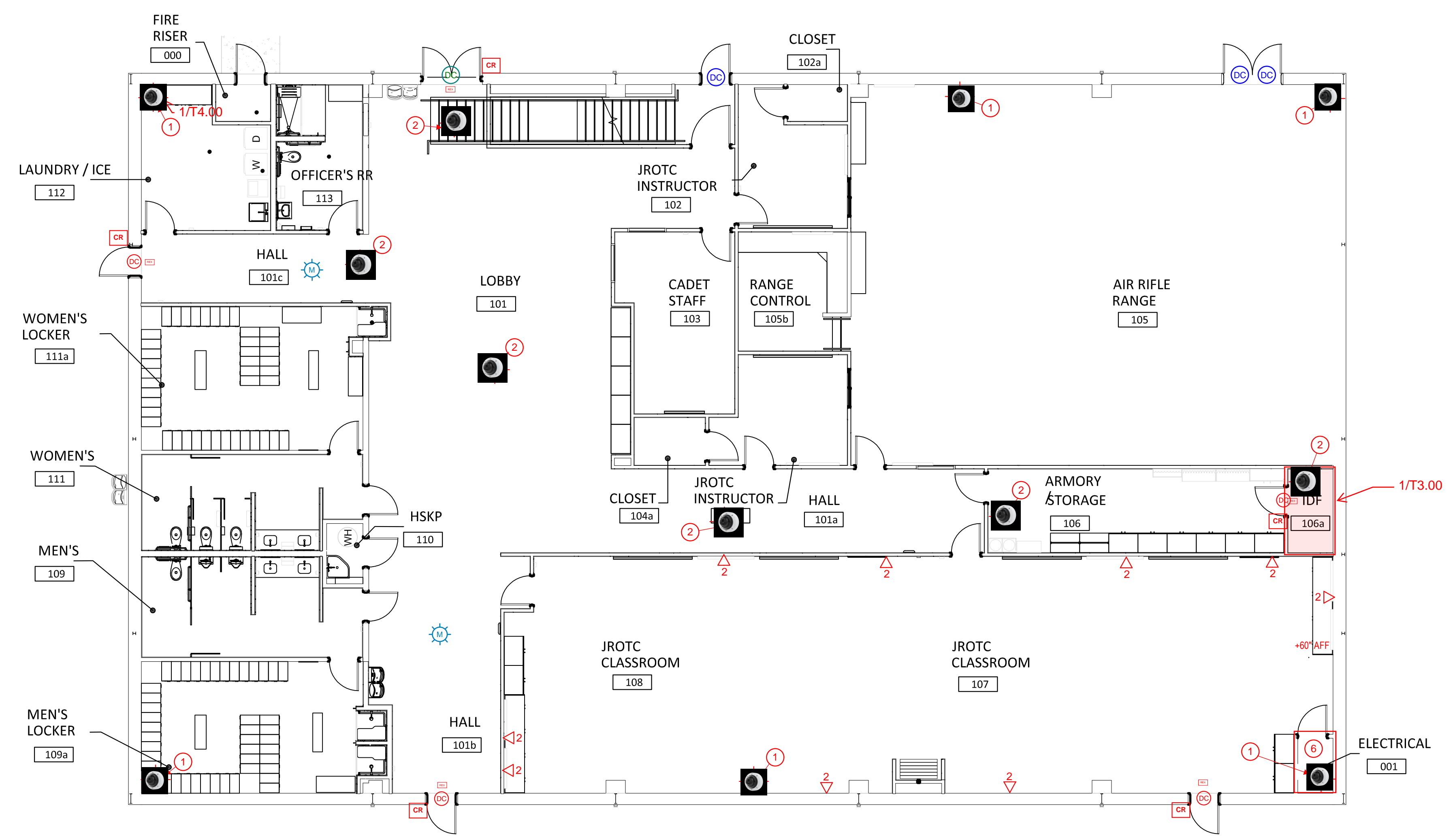
Project No: 20-0028  
Date: 06/16/22  
Checked By: DG  
Drawn By: PM

Sheet Name:  
TECHNOLOGY  
COMPOSITE FLOOR  
PLANS

Sheet No:  
T2.01



1 TECHNOLOGY LEVEL 2 - COMPOSITE FLOOR PLAN  
T2.01 SCALE: 1/8" = 1'-0"



1 TECHNOLOGY LEVEL 1 - COMPOSITE FLOOR PLAN  
T2.01 SCALE: 1/8" = 1'-0"

ACS LEGEND			
Description	Quantity	UserDefined	
CARD READER	5		
DC ONLY	3		
DOUBLE DOOR RECESSED DC	1		
MOTION SENSOR	2		
REQUEST TO EXIT	5		
SINGLE DOOR RECESSED DC	4		

VMS LEGEND			
Description	Quantity	MOUNT	
P3265-LVE	6	WALL	
P3265-LV	7	WALL	

A

B

C

D

E

J101

Heading 18 (Set 1 SELP10)			
Qty	Description	Part Number	Notes
1	Pair, Both Active	J101	
6' 0" X 7' 0" X 1 3/4" Equal Pair HMF/HMD Jamb Depth: 0"			
Leaf 1: 3' 0" X 7' 0" X 1 3/4" HG2 Leaf 2: 3' 0" X 7' 0" X 1 3/4"			

Qty	Description	Part Number
1	Continuous Hinge	CFM835LF-HD1
1	Continuous Hinge	CFM835LF-HD1 SER12
1	Mullion	L980A US28
1	Rim Exit Device, Exit Only	8810 EO US32D RHR/LHR
1	Access Control Rim Exit	70 M1-8876-24V BIPS-0E ETL US32D RHR/LHR
1	Cylinder	70 980C1 US26D
1	Small Format Inter Core	3360006N 26 GGK
2	Drop Plate	351D EN
1	Surface Closer	351 CPS EN RHR
1	Surface Closer	351 CPS EN LHR
1	Threshold	171A 36"
1	Gasketing	573BL 20"
1	Gasketing	588BL 20"
2	Sweep	315CN 48"
1	ElectroLynx Harness	QC-C006
1	ElectroLynx Harness	QC-C306P
1	ElectroLynx Harness	QC-C1500P

Heading 9 (Set 4 SELP10)

Heading 9 (Set 4 SELP10)			
Qty	Description	Part Number	Notes
1	Single	J101B	
1	Single	J101C	
3' 0" X 7' 0" X 1 3/4" Single F HMD/HMF Jamb Depth: 0"			

Qty	Description	Part Number
2	Hinge, Full Mortise, Hwy Wt	HT4A3386 QC12 4-1/2" x 4-1/2" US32D RHR
4	Hinge, Full Mortise, Hwy Wt	HT4A3386 NRP 4-1/2" x 4-1/2" US32D RHR
2	Access Control Mort Exit	70 M1-8974-24V BIPS-0E ETL US32D RHR
2	Small Format Inter Core	3360006N 26 GGK
2	Surface Closer	351 CPS EN RHR
2	Threshold	2009APK 36" MSES2555
2	Gasketing	544BL 20"
2	ElectroLynx Harness	QC-C1500P
2	ElectroLynx Harness	QC-C300P
2	ElectroLynx Harness	QC-C006

Heading 8 (Set 4 SELP10)

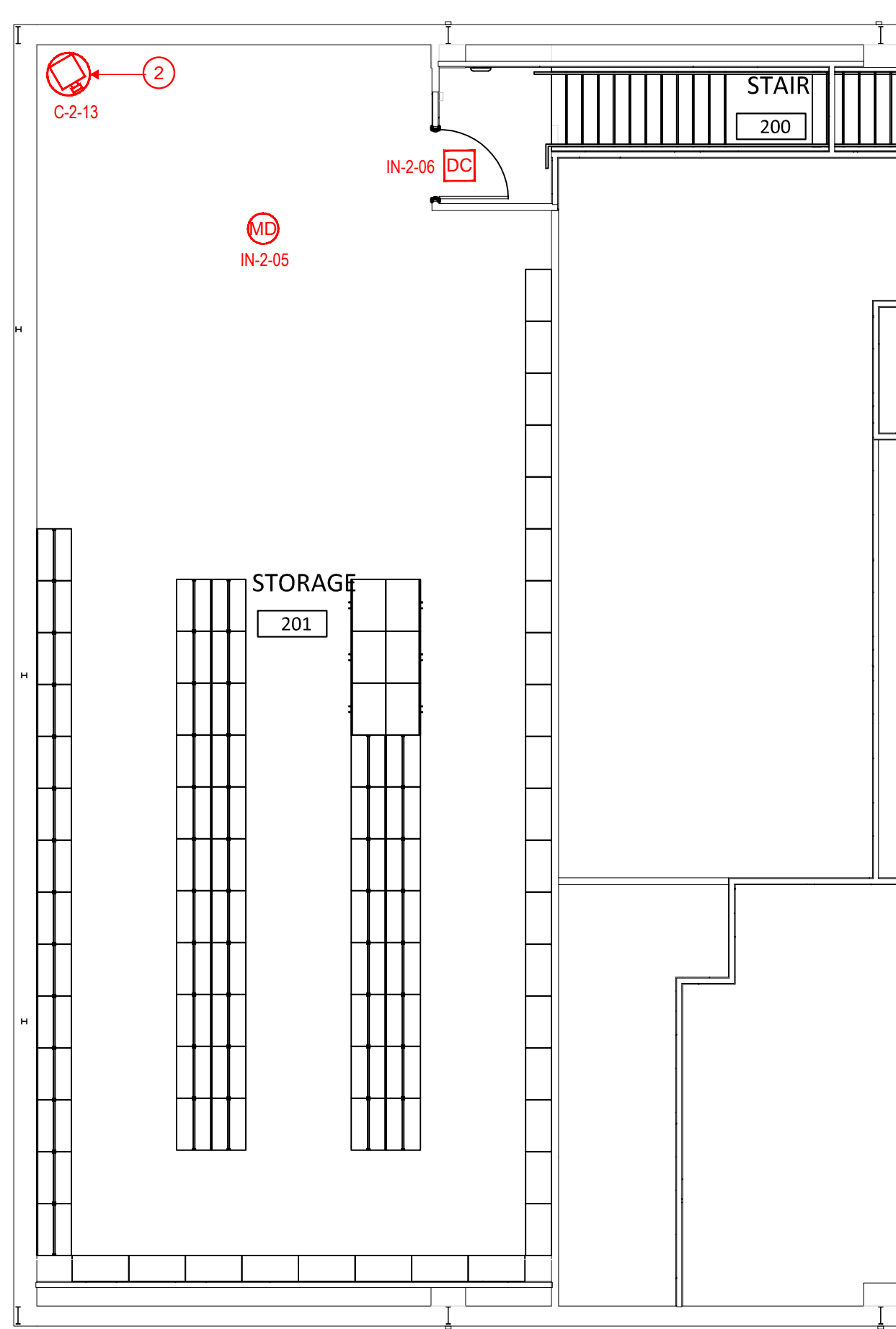
Heading 8 (Set 4 SELP10)			
Qty	Description	Part Number	Notes
1	Single	J107A	
3' 0" X 7' 0" X 1 3/4" Single F HMD Jamb Depth: 0"			

Qty	Description	Part Number
1	Hinge, Full Mortise, Hwy Wt	HT4A3386 QC12 4-1/2" x 4-1/2" US32D RHR
2	Hinge, Full Mortise, Hwy Wt	HT4A3386 NRP 4-1/2" x 4-1/2" US32D RHR
1	Access Control Mort Exit	70 M1-8974-24V BIPS-0E ETL US32D RHR
1	Small Format Inter Core	3360006N 26 GGK
1	Surface Closer	351 CPS EN RHR
1	Threshold	2009APK 36" MSES2555
1	Gasketing	544BL 20"
1	ElectroLynx Harness	QC-C1500P
1	ElectroLynx Harness	QC-C300P
1	ElectroLynx Harness	QC-C006

Heading 11 (Set 5 SELP10)

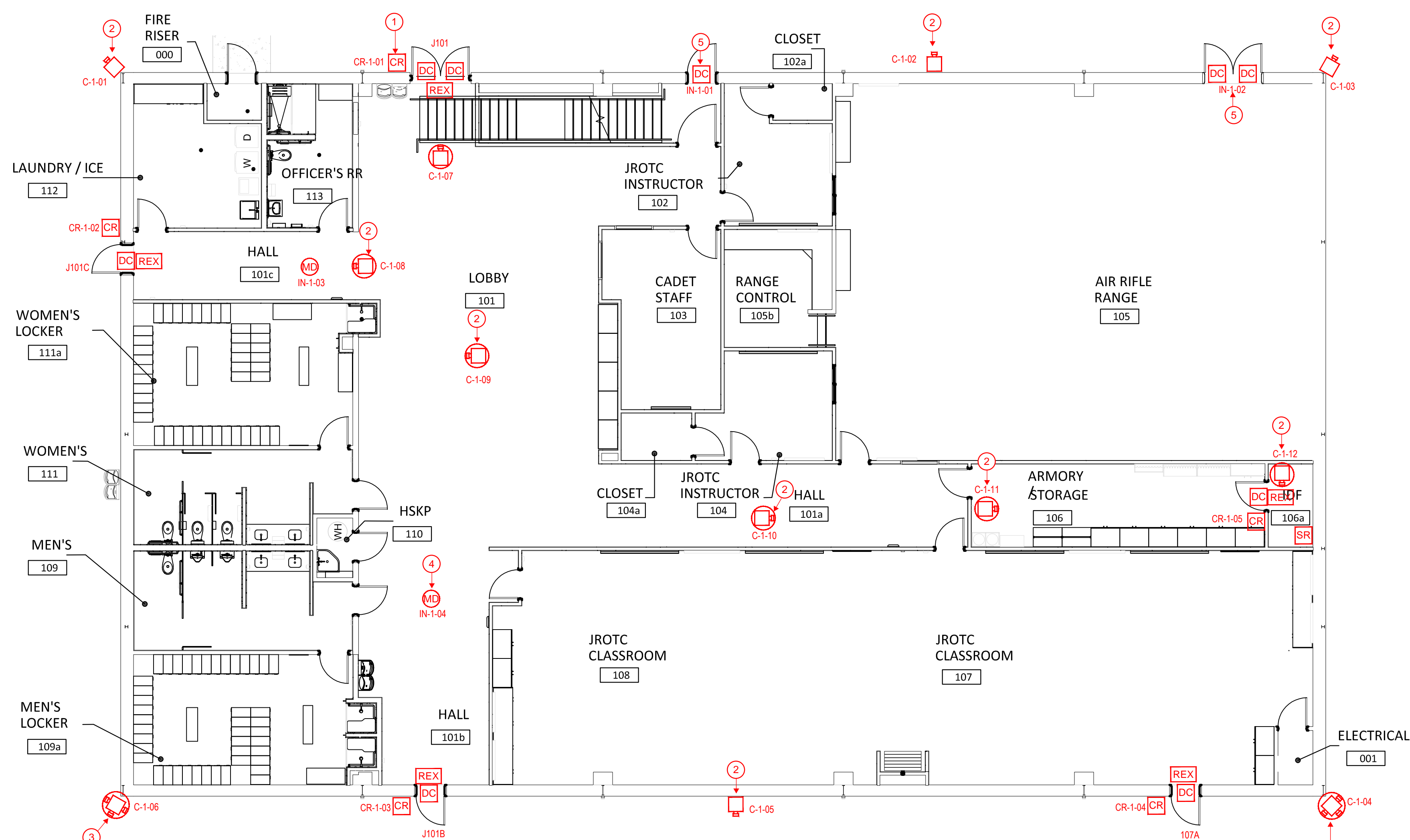
Heading 11 (Set 5 SELP10)			
Qty	Description	Part Number	Notes
1	Single	106a	
3' 0" X 7' 0" X 1 3/4" Single F WDD/HMF Jamb Depth: 5.7			

Qty	Description	Part Number
2	Hinge, Full Mortise	TA2714 4-1/2" x 4-1/2" US26D RHR
1	Electric Hinge	TA2714-QC12 4-1/2" x 4-1/2" US26D RHR
1	Storeroom/Closet Lock	28 70 10G04 LL US26D RHR
1	Access Control Cyl Lock	28 M1-10G271-24V LL US26D RHR
1	Small Format Inter Core	3360006N 26 GGK
1	Surface Closer	TB 351 P9 EN RHR
1	Wall Stop	409 US26D
3	Silencer	608-RWV
1	ElectroLynx Harness	QC-C206P
1	ElectroLynx Harness	QC-C1500P
2	Position Switch	DPS-M-8K



1 SECURITY LEVEL 2 - COMPOSITE FLOOR PLAN

SCALE: 1/8" = 1'-0"



1 SECURITY LEVEL 1 - COMPOSITE FLOOR PLAN

SCALE: 1/8" = 1'-0"

GENERAL NOTES:

1. ALL CONDUIT PATHWAYS, ROUGH-INS, CONDUIT SLEEVES, ETC. INDICATED ON THE SECURITY DRAWINGS ARE TO BE PROVIDED AND INSTALLED BY DIVISION 26.
2. ALL POWER INDICATED ON THE SECURITY DRAWINGS SHALL BE PROVIDED AND INSTALLED (BY DIVISION 26).
3. CONTRACTOR SHALL RESTORE ALL PENETRATIONS PROVIDED THROUGH FIRE RATED WALLS/STRUCTURES FOR DATA, VOICE, AND SECURITY CABLING BACK TO THE ORIGINAL RATING (BY DIVISION 26).
4. CONTRACTOR SHALL RESTORE ALL PENETRATIONS PROVIDED THROUGH NON-RATED WALLS/STRUCTURES FOR DATA, VOICE, AND SECURITY CABLING FOR SOUND TO REDUCE NOISE TRAVELING THROUGH PENETRATIONS (BY DIVISION 26).
5. CABLING FOR DATA, VOICE, AND SECURITY SHALL BE ROUTED IN SEPARATE PATHWAYS IN J-HOOKS, CONDUITS, CONDUIT SLEEVES, CORES, ETC. THROUGHOUT THE ENTIRE PATHWAY. DIFFERENT MEDIA TYPES (DATA, VOICE, SECURITY, ETC.) SHALL NOT SHARE THE SAME J-HOOK, CONDUIT, CONDUIT SLEEVE, CORE, ETC. (BY DIVISION 26).
6. ALL CONDUITS FOR DATA, VOICE, AND SECURITY DEVICES SHALL ROUTE FROM THE DEVICE LOCATION AND TERMINATE ABOVE AN ACCESSIBLE CEILING IN THE SAME ROOM WHERE THE DEVICE IS LOCATED. IF THE ROOM WHERE THE DEVICE IS LOCATED DOES NOT HAVE AN ACCESSIBLE CEILING, THE CONDUIT SHALL ROUTE TO THE NEAREST ACCESSIBLE CEILING OFF OF A MAIN CORRIDOR. CONDUIT PATHWAY SHALL TAKE THE SHORTEST ROUTE TO THE APPLICABLE DATA ROOM TO MINIMIZE THE CABLE LENGTH (BY DIVISION 26).
7. CONDUIT SEGMENTS SHALL BE NO MORE THAN 100-FEET IN LENGTH WITH NO MORE THAN THE EQUIVALENT OF (2) 90 DEGREE BENDS BETWEEN PULLING POINTS (BY DIVISION 26).
8. CONDUITS SHALL MAINTAIN A BEND RADIUS OF 6 TIMES THE DIAMETER OF THE CONDUIT FOR CONDUITS 2-INCHES OR SMALLER AND 10 TIMES THE DIAMETER OF THE CONDUIT FOR CONDUITS GREATER THAN 2-INCHES (BY DIVISION 26).
9. ALL CONDUITS SHALL HAVE A PULL STRING INSTALLED FOR PULLING OF CABLE. CLEARLY LABEL AS "PULL STRING" INDICATING OPPOSITE END LOCATION (BY DIVISION 26).
10. ALL SPARE CONDUITS OR CONDUITS FILLED WITH

KEYED NOTES:

1. CARD READER INTEGRATED WITH NEW DOOR, PROVIDED AND INSTALLED BY DOOR HARDWARE CONTRACTOR. SECURITY CONTRACTOR TO TIE IN ACCESS CONTROL CABLING AND TERMINATIONS FROM SECURITY PANEL. TYPICAL.
2. EXISTING OWNER PROVIDED CAMERA TO BE CONTRACTOR INSTALLED.
3. NEW CAMERA TO BE PROVIDED AND INSTALLED BY CONTRACTOR.
4. MOTION DETECTOR TO BE CABLED TO ACCESS CONTROL SYSTEM AS ALARM INPUT. COORDINATE SCHEDULE FOR ALARMS WITH OWNER. TYPICAL.
5. DOOR POSITION SWITCH TO BE CABLED TO ACCESS CONTROL SYSTEM AS ALARM INPUT. COORDINATE SCHEDULE FOR ALARMS WITH OWNER. TYPICAL.

PIVOT NORTH ARCHITECTURE, PLLC.  
1101 W. GROVE STREET  
BOISE, ID 83702  
www.pivnorthdesign.com

STAMP

Project:  
IL TEXAS WINDMILL LAKES-OREM HS - PHASE 6 - NEW SCHOOL  
9901 WINDMILL LAKES BLVD., HOUSTON, TEXAS, 77075

Project No: 20-0028  
Date: 06/16/22  
Checked By: DG  
Drawn By: PM

Sheet Name:  
SECURITY COMPOSITE FLOOR PLANS

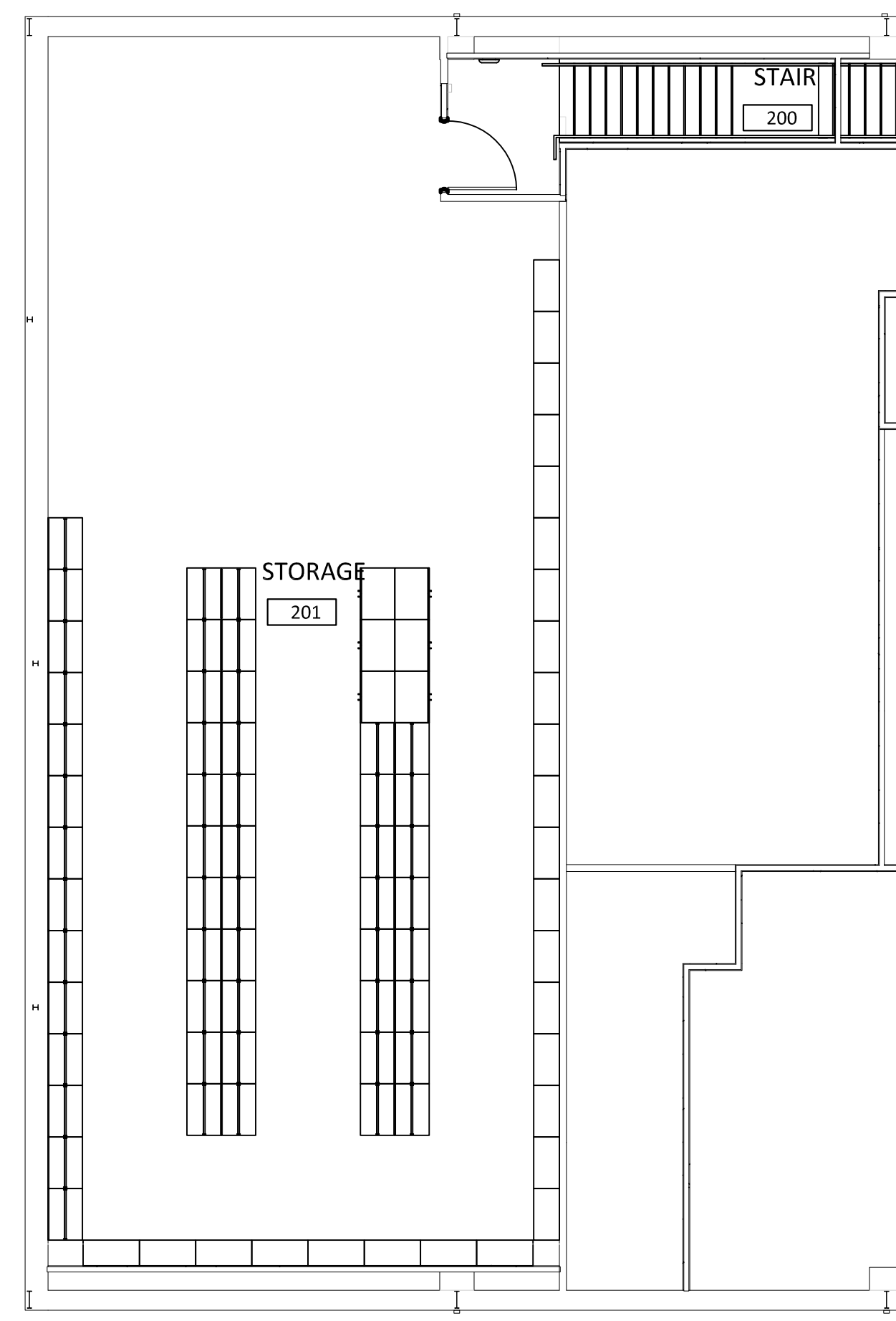
Sheet No:

TS2.01

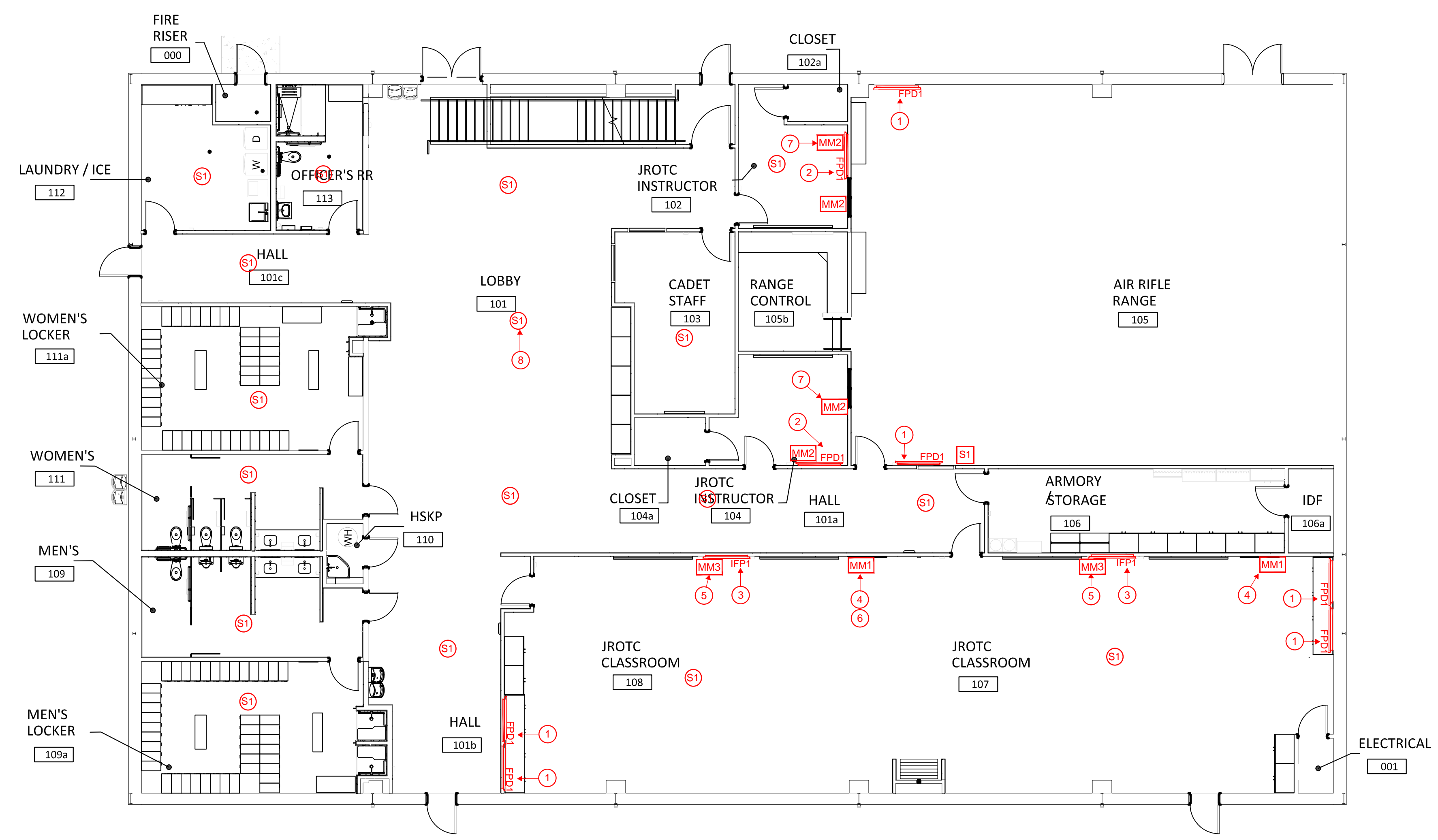
- 1. FLAT PANEL DISPLAY PROVIDED BY AIR RIFLE RANGE SYSTEM. CONTRACTOR INSTALLED. SOURCE INPUT VIA NETWORK CONNECTION FROM AIR RIFLE RANGE SYSTEM.
- 2. FLAT PANEL DISPLAY. OWNER PROVIDED / CONTRACTOR INSTALLED.
- 3. INTERACTIVE FLAT PANEL DISPLAY. OWNER PROVIDED / CONTRACTOR INSTALLED.
- 4. PROVIDE HDMI AND USB SINGLE GANG FACEPLATE. CABLE TO FLAT PANEL INTERACTIVE DISPLAY.
- 5. PROVIDE HDMI AND USB SINGLE GANG FACEPLATE. PROVIDE PATCH CABLES TO DISPLAY.
- 6. SOURCE INPUT SHALL PROVIDE CONTENT FOR ROOM IN DIVISIBLE SPACE AND PROVIDE CONTENT FOR BOTH DISPLAYS WHEN COMBINED SPACE.
- 7. PROVIDE POINT-TO-POINT HDMI CONNECTION FOR DISPLAY.
- 8. OVERHEAD PAGING SPEAKER, TYPICAL S1 LOCATIONS.

PIVOT NORTH ARCHITECTURE, PLLC.  
1101 W. GROVE STREET  
BOISE, ID 83702  
www.pivotnorthdesign.com

STAMP  
:



1 AUDIO/VISUAL LEVEL 2 - COMPOSITE FLOOR PLAN  
TA2.01 SCALE: 1/8" = 1'-0"



1 AUDIO/VISUAL LEVEL 1 - COMPOSITE FLOOR PLAN  
TA2.01 SCALE: 1/8" = 1'-0"

Project: IL TEXAS WINDMILL LAKES-OREM HS - PHASE 6 - NEW SCHOOL

9901 WINDMILL LAKES BLVD., HOUSTON, TEXAS, 77075

Project No: 20-0028  
Date: 06/16/22  
Checked By: DG  
Drawn By: PM

Sheet Name:  
**AUDIO/VISUAL  
COMPOSITE FLOOR  
PLANS**

Sheet No:  
**TA2.01**