



**ATLANTA NEIGHBORHOOD
CHARTER SCHOOL**

helping students learn to use their minds well

Changes to CCRPI for 2017-18 School Year
October 2017

What is CCRPI & how is it used?

- Georgia's [College and Career Ready Performance Index \(CCRPI\)](#) was first implemented in 2012 as an alternative to No Child Left Behind's Adequate Yearly Progress (AYP) as federally-required single statewide accountability system
- All K-12 public schools receive a single CCRPI score annually
- All start-up charter schools--like ANCS--must meet CCRPI-related performance goals
 - Meet/exceed authorizing district CCRPI average and state CCRPI average
 - ["Beat the odds"](#) by having higher CCRPI score than predicted based on student and school-based factors

Why is CCRPI changing and how?

- GA has changed CCRPI calculations slightly each year since 2012, however, much larger changes coming in 2017
- Passage of the Every Student Succeeds Act (ESSA) allowed Georgia to revise CCRPI, and here is summary of changes
 - Elementary and middle schools now have four categories instead of three; High schools have five categories
 - The overall number of indicators has been reduced to 11 for elementary and middle schools and 15 for high schools
 - All “Exceeding the Bar” (ETB) indicators have been removed (SLDS, STEM, STEAM, Innovative Practice, Personalized Climate, etc.)
 - Career Lessons, Portfolios, Inventories, and Individual Graduation Plan are no longer factored into CCRPI.

It is possible that additional changes could occur during the next 120 days.



2017 College and Career Ready Performance Index Elementary School Grades K - 5

CONTENT MASTERY

1. Weighted percent of students scoring at Developing Learner or above on the Georgia Milestones English Language Arts EOG (required participation rate \geq 95%)
2. Weighted percent of students scoring at Developing Learner or above on the Georgia Milestones mathematics EOG (required participation rate \geq 95%)
3. Weighted percent of students scoring at Developing Learner or above on the Georgia Milestones science EOG (required participation rate \geq 95%)
4. Weighted percent of students scoring at Developing Learner or above on the Georgia Milestones social studies EOG (required participation rate \geq 95%)

*Developing Learners are weighted at 0.5, Proficient Learners are weighted at 1.0, and Distinguished Learners are weighted at 1.5.

POST ELEMENTARY SCHOOL READINESS

5. Percent of English Learners with positive movement from one Performance Band to a higher Performance Band as measured by the ACCESS for ELLs
- ✗ Percent of Students With Disabilities served in general education environments at least 80% of the school day
7. Percent of students in grade 3 achieving a Lexile measure equal to or greater than 650 on the Georgia Milestones ELA EOG
8. Percent of students in grade 5 achieving a Lexile measure equal to or greater than 850 on the Georgia Milestones ELA EOG
- ✗ Percent of students in grades 1-5 completing the identified number of grade specific career awareness lessons aligned to Georgia's 17 Career Clusters
- ✗ Percent of 5th grade students with a complete career portfolio by the end of grade 5
11. Percent of students missing fewer than 6 days of school

PREDICTOR FOR HIGH SCHOOL GRADUATION

- ✗. Percent of students' assessments scoring at Proficient or Distinguished Learner on all Georgia Milestones EOGs



Georgia Department of Education
Richard Woods, Georgia's School Superintendent
"Ensuring Georgia's Future"

2017 College and Career Ready Performance Index Middle School Grades 6 - 8

CONTENT MASTERY

1. Weighted percent of students scoring at Developing Learner or above on the Georgia Milestones English Language Arts EOG (required participation rate $\geq 95\%$)
2. Weighted percent of students scoring at Developing Learner or above on the Georgia Milestones mathematics EOG or EOC (required participation rate $\geq 95\%$)
3. Weighted percent of students scoring at Developing Learner or above on the Georgia Milestones science EOG or EOC (required participation rate $\geq 95\%$)
4. Weighted percent of students scoring at Developing Learner or above on the Georgia Milestones social studies EOG (required participation rate $\geq 95\%$)

*Developing Learners are weighted at 0.5, Proficient Learners are weighted at 1.0, and Distinguished Learners are weighted at 1.5.

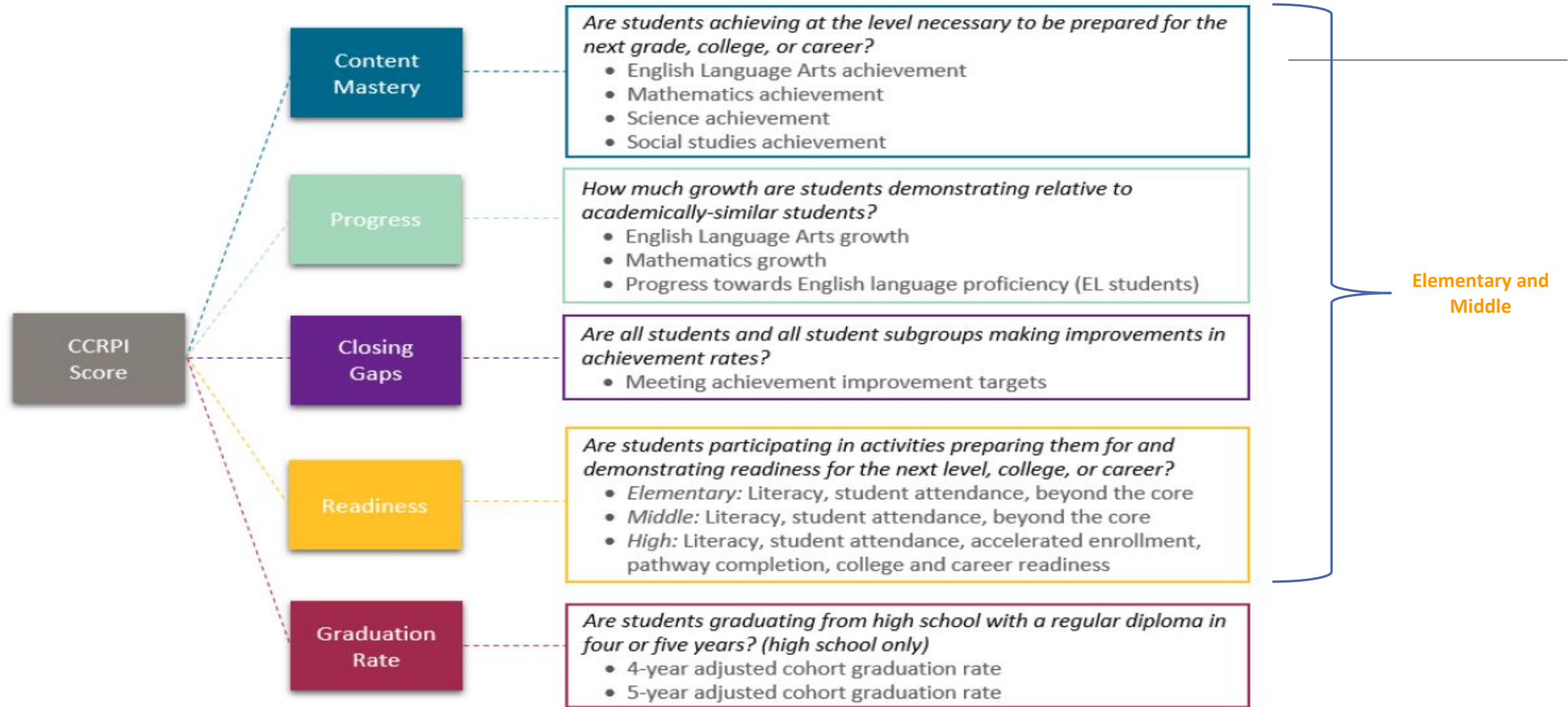
POST MIDDLE SCHOOL READINESS

5. Percent of English Learners with positive movement from one Performance Band to a higher Performance Band as measured by the ACCESS for ELLs
- ✗ Percent of Students With Disabilities served in general education environments at least 80% of the school day
7. Percent of students in grade 8 achieving a Lexile measure equal to or greater than 1050 on the Georgia Milestones ELA EOG
- ✗ Percent of students completing 2 or more state defined career related assessments/inventories and a state defined Individual Graduation Plan by the end of grade 8
9. Percent of students missing fewer than 6 days of school

PREDICTOR FOR HIGH SCHOOL GRADUATION

- ✗. Percent of students' assessments scoring at Proficient or Distinguished Learner on Georgia Milestones EOGs or EOCs

CCRPI is simpler and has fewer indicators



Category weights have been redistributed

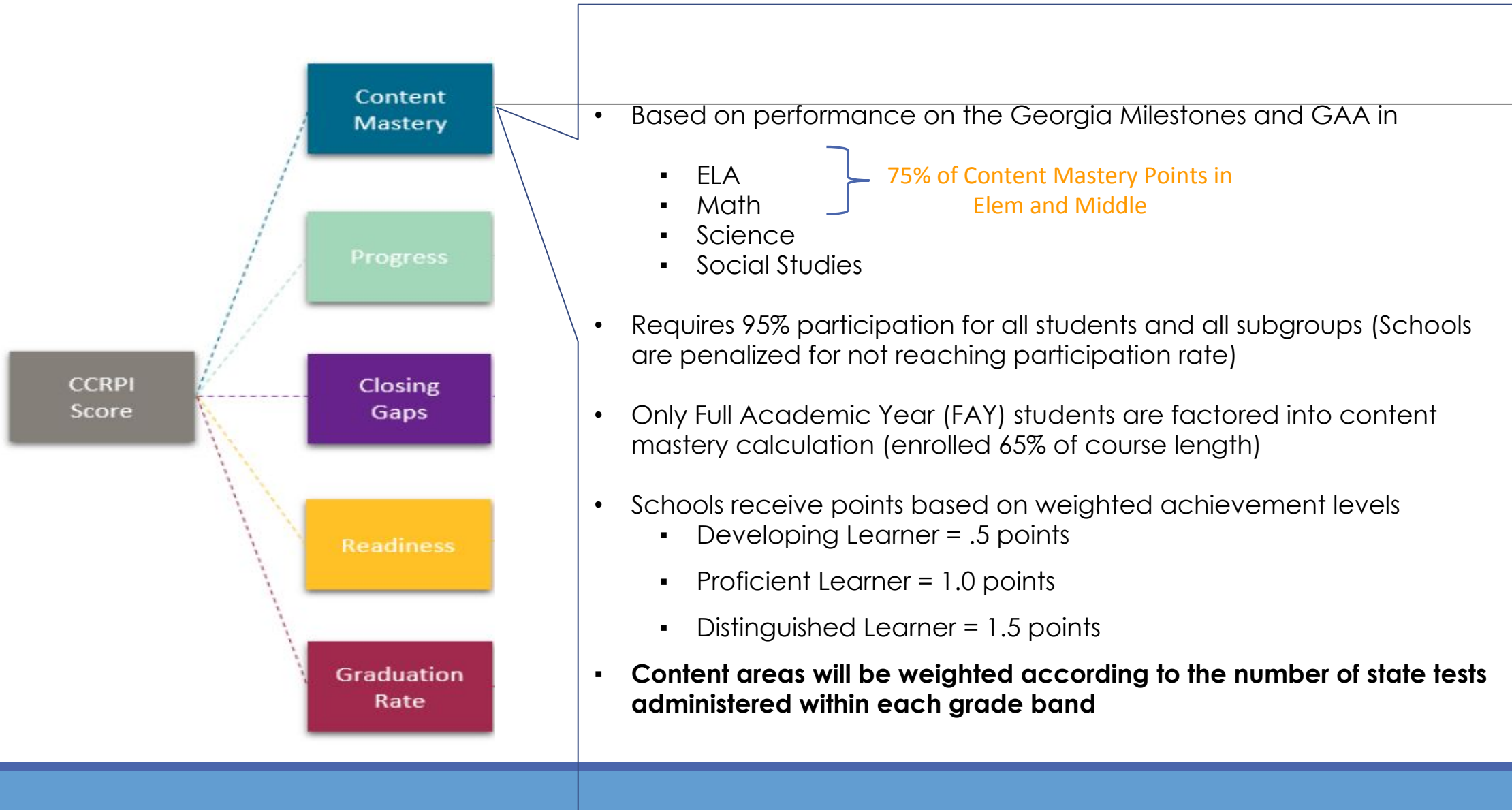
	Elementary	Middle	High
Content Mastery	30%	30%	30%
Progress	35%	35%	30%
Closing Gaps	15%	15%	10%
Readiness	20%	20%	15%
Graduation Rate	*	*	15%
Total	100%	100%	100%

ELA and Math have increased value on CCRPI

CCRPI Component	CCRPI Indicator	ES	MS	HS
Content Mastery	ELA Achievement	11.25	11.25	7.50
Content Mastery	Mathematics Achievement	11.25	11.25	7.50
Closing Gaps	ELA and Mathematics	7.50	7.50	5.00
Progress	ELA growth			13.50
Progress	Mathematics growth			13.50
Progress	ELA growth	15.75	15.75	
Progress	Mathematics growth	15.75	15.75	
Graduation Rate	4-Year Adjusted Cohort Graduation Rate			10.00
Graduation Rate	5-Year Adjusted Cohort Graduation Rate			5.00
Progress	Progress Towards English Language Proficiency	3.50	3.50	3.00
Content Mastery	Science Achievement	3.75	3.75	7.50
Content Mastery	Social Studies Achievement	3.75	3.75	7.50
Closing Gaps	Science and Social Studies	7.50	7.50	5.00
Readiness	Literacy	6.67	6.67	3.00
Readiness	Student Attendance	6.67	6.67	3.00
Readiness	Beyond the Core	6.67	6.67	
Readiness	Accelerate Enrollment			3.00
Readiness	Pathways			3.00
Readiness	College and Career Readiness			3.00

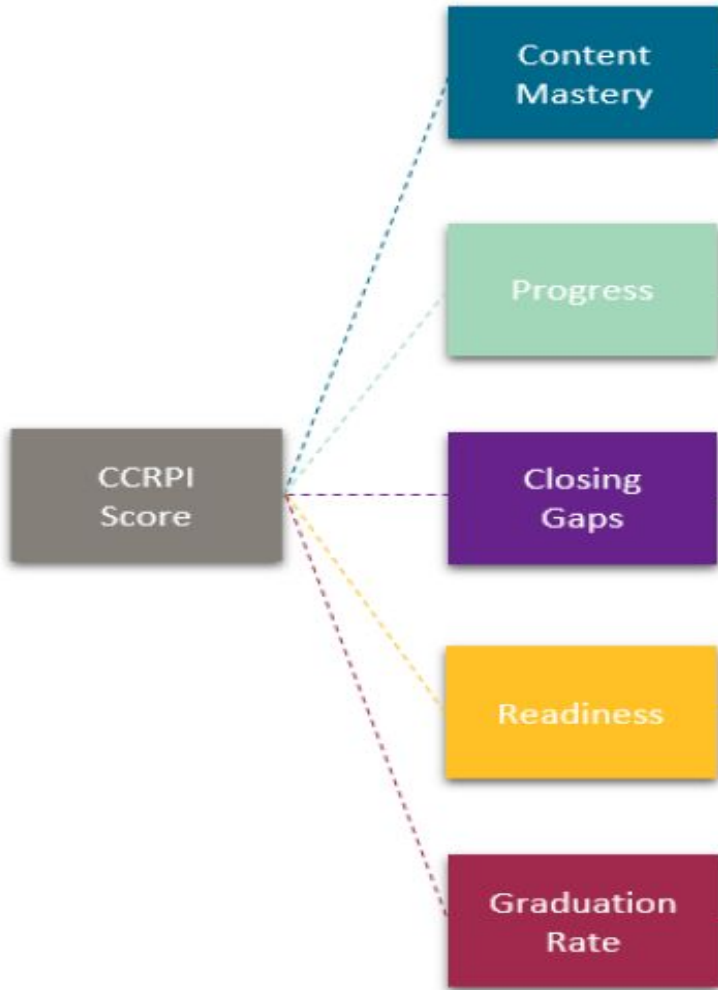
Content Mastery

Are students achieving at the level necessary to be prepared for the next grade, college, or career?



Progress

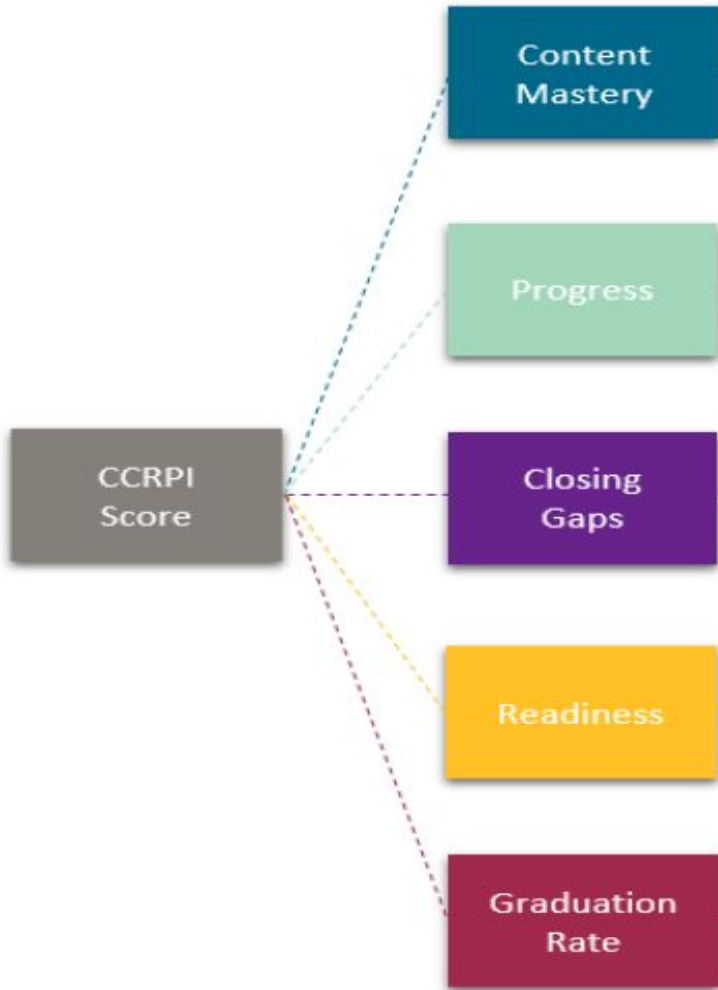
How much growth are students demonstrating relative to similar students?



- Uses Student Growth Percentiles (SGP) to measure progress in ELA and Math only.
- SGPs describe the growth a student has demonstrated relative to academically similar students.
 - Low growth (1-34)
 - Typical growth (35-65)
 - High growth (66-99)
- Progress points are weighted similar to Content Mastery
 - SGP 1-29 = 0 points
 - SGP 30-40 = .5 points
 - SGP 41-65 = 1 point
 - SGP 66-99 = 1.5 points
- ES and MS Progress towards proficiency for English Learners (EL) will be measured using performance bands on the ACCESS for ELLs.
 - No progress = 0 points
 - Less than one band = .5 points
 - One band = 1 point
 - More than one band = 1.5 points
- **ELA and mathematics will receive 90% of the weight and progress towards English language proficiency will receive 10% of the weight.**

Closing Gaps

Are all students and all student subgroups making improvements in achievement rates?



- Based on CCRPI improvement targets for academic achievement for all subgroups.
- Improvement flags will represent progress towards achievement goals
- Improvement targets are calculated by **school** and **subgroup**

$$\text{Improvement target} = (100 - \text{baseline}) * 3\%$$

- No improvement = 0 points
- Progress made, target not met = .5 points
- Target met = 1 point
- **ED, EL, and SWD subgroups can earn 1.5 points if a 6% improvement target is met.**

Closing Gaps

Subgroup Performance	End of Grade			
	English Language Arts	Mathematics	Science	Social Studies
American Indian/Alaskan	NA	NA	NA	NA
Asian/Pacific Islander	P-S	P	P	P-S
Black	P	P-SG	P-SG	P
Hispanic	P	P	P	P
Multi-Racial	P	P	P	P
White	P	P	P	P
Economically Disadvantaged	P	P	P-SG	P-SG
English Learners	P	P	P	P
Students With Disability	P-SG	P-SG	P	P

Readiness

Are students participating in activities preparing them for and demonstrating readiness for the next level, college, or career?

