



# EBIA Academic Report

1

# SBAC - Spring 2023



# SBAC ELA/Math Achievement Levels 2022-2023

**SBAC ELA Achievement Levels**

|                | Level 1 | Level 2 | Level 3 | Level 4 | On or Above Grade Level (3 or 4) | Totals |
|----------------|---------|---------|---------|---------|----------------------------------|--------|
| <b>Grade 6</b> |         |         |         |         |                                  |        |
| Students       | 16      | 18      | 18      | 18      | 36                               | 70     |
| % Students     | 23%     | 26%     | 26%     | 26%     | 51%                              | 100%   |

**SBAC ELA Achievement Levels**

|                | Level 1 | Level 2 | Level 3 | Level 4 | On or Above Grade Level (3 or 4) | Totals |
|----------------|---------|---------|---------|---------|----------------------------------|--------|
| <b>Grade 7</b> |         |         |         |         |                                  |        |
| Students       | 33      | 27      | 29      | 16      | 45                               | 105    |
| % Students     | 31%     | 26%     | 28%     | 15%     | 43%                              | 100%   |

**SBAC ELA Achievement Levels**

|                | Level 1 | Level 2 | Level 3 | Level 4 | On or Above Grade Level (3 or 4) | Totals |
|----------------|---------|---------|---------|---------|----------------------------------|--------|
| <b>Grade 8</b> |         |         |         |         |                                  |        |
| Students       | 17      | 29      | 38      | 9       | 47                               | 93     |
| % Students     | 18%     | 31%     | 41%     | 10%     | 51%                              | 100%   |

**SBAC ELA Achievement Levels**

|                 | Level 1 | Level 2 | Level 3 | Level 4 | On or Above Grade Level (3 or 4) | Totals |
|-----------------|---------|---------|---------|---------|----------------------------------|--------|
| <b>Grade 11</b> |         |         |         |         |                                  |        |
| Students        | 4       | 7       | 13      | 9       | 22                               | 33     |
| % Students      | 12%     | 21%     | 39%     | 27%     | 67%                              | 100%   |

**SBAC Math Achievement Levels**

|                | Level 1 | Level 2 | Level 3 | Level 4 | On or Above Grade Level (3 or 4) | Totals |
|----------------|---------|---------|---------|---------|----------------------------------|--------|
| <b>Grade 6</b> |         |         |         |         |                                  |        |
| Students       | 18      | 18      | 14      | 20      | 34                               | 70     |
| % Students     | 26%     | 26%     | 20%     | 29%     | 49%                              | 100%   |

**SBAC Math Achievement Levels**

|                | Level 1 | Level 2 | Level 3 | Level 4 | On or Above Grade Level (3 or 4) | Totals |
|----------------|---------|---------|---------|---------|----------------------------------|--------|
| <b>Grade 7</b> |         |         |         |         |                                  |        |
| Students       | 41      | 28      | 21      | 15      | 36                               | 105    |
| % Students     | 39%     | 27%     | 20%     | 14%     | 34%                              | 100%   |

**SBAC Math Achievement Levels**

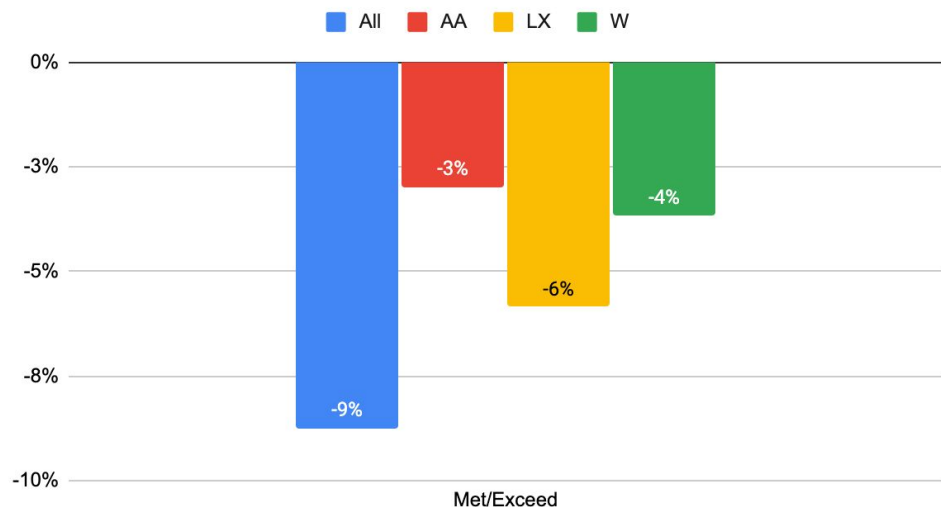
|                | Level 1 | Level 2 | Level 3 | Level 4 | On or Above Grade Level (3 or 4) | Totals |
|----------------|---------|---------|---------|---------|----------------------------------|--------|
| <b>Grade 8</b> |         |         |         |         |                                  |        |
| Students       | 50      | 19      | 16      | 8       | 24                               | 93     |
| % Students     | 54%     | 20%     | 17%     | 9%      | 26%                              | 100%   |

**SBAC Math Achievement Levels**

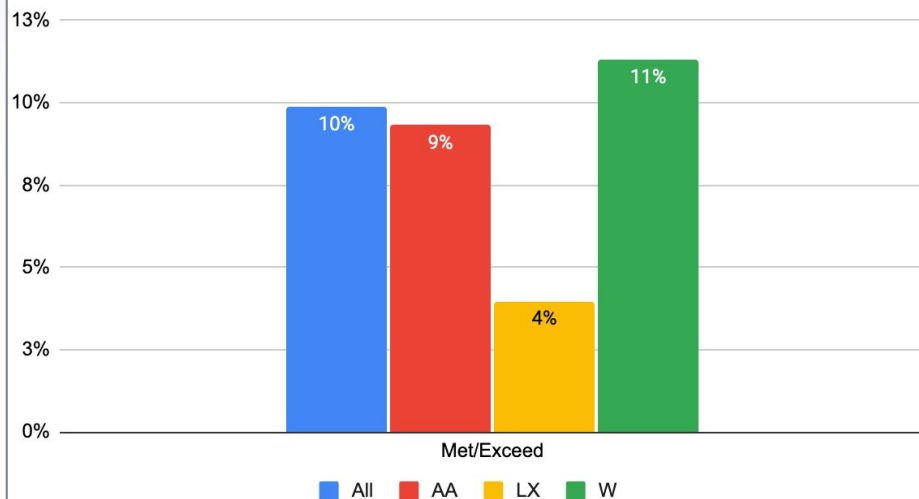
|                 | Level 1 | Level 2 | Level 3 | Level 4 | On or Above Grade Level (3 or 4) | Totals |
|-----------------|---------|---------|---------|---------|----------------------------------|--------|
| <b>Grade 11</b> |         |         |         |         |                                  |        |
| Students        | 12      | 9       | 4       | 8       | 12                               | 33     |
| % Students      | 36%     | 27%     | 12%     | 24%     | 36%                              | 100%   |

# SBAC Math Proficiency Changes

SBAC Math Proficiency Change 18/19 - 21/22

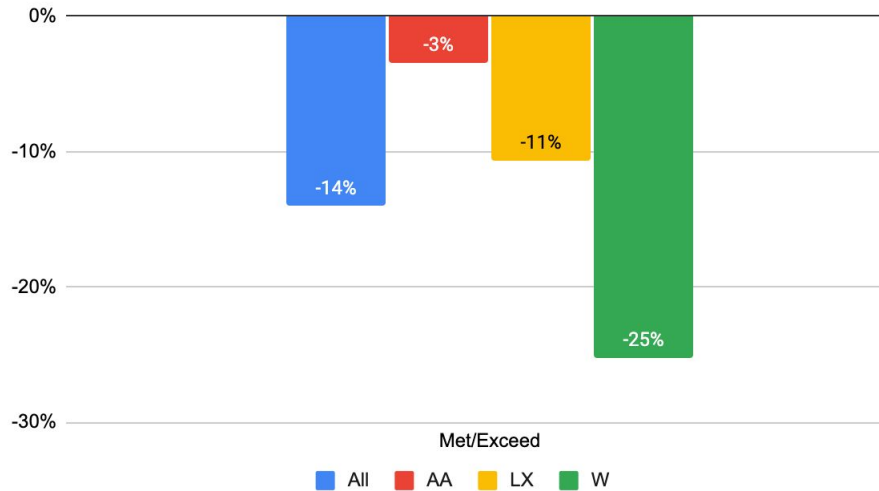


SBAC Math Proficiency Change 21/22 - 22/23

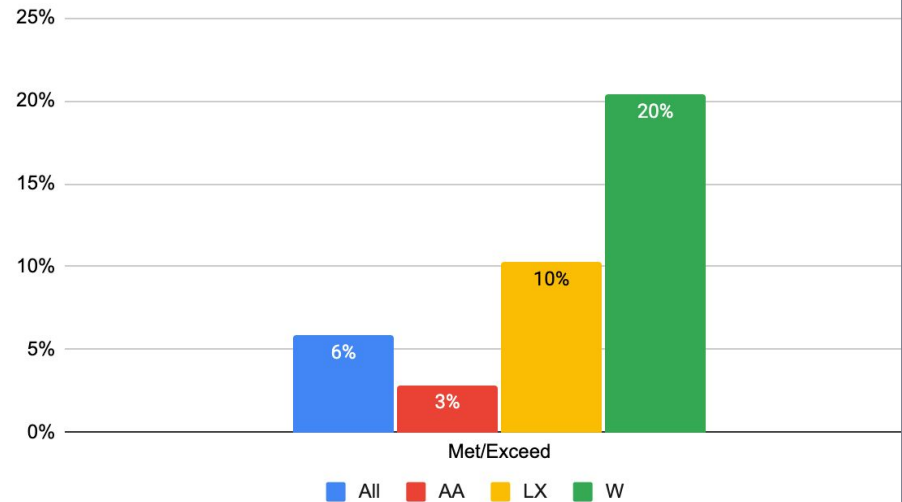


# SBAC ELA Proficiency Changes

SBAC ELA Proficiency Change 18/19-21/22



SBAC ELA Proficiency Change 21/22 - 22/23

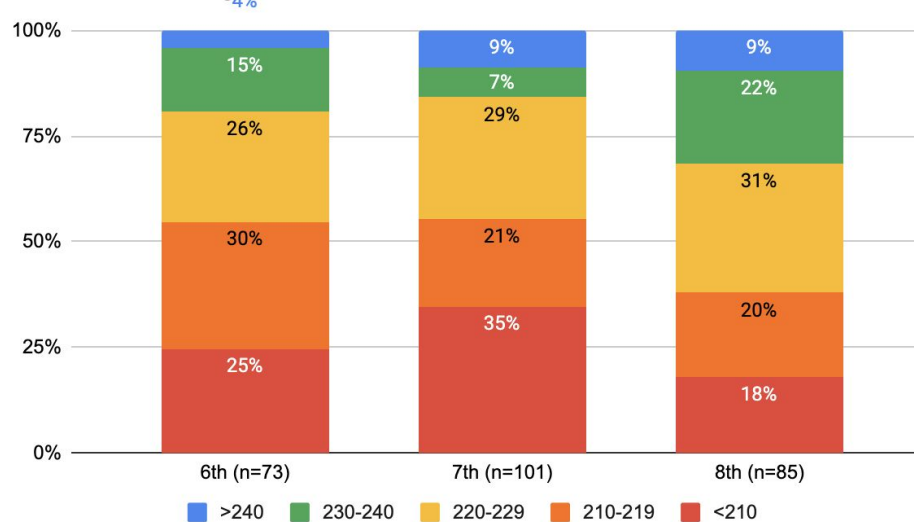




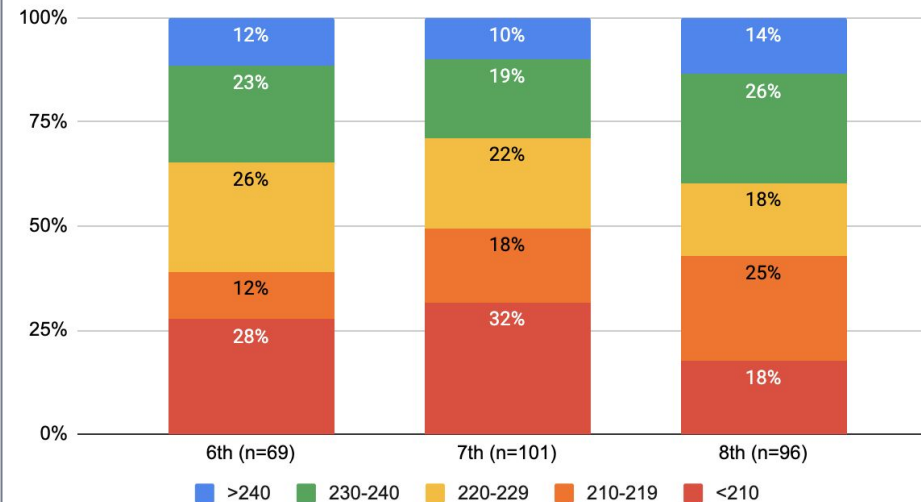
# MAP - Winter 2023

# LS MAP Data Winter 2023

LS MAP Reading Data W2023

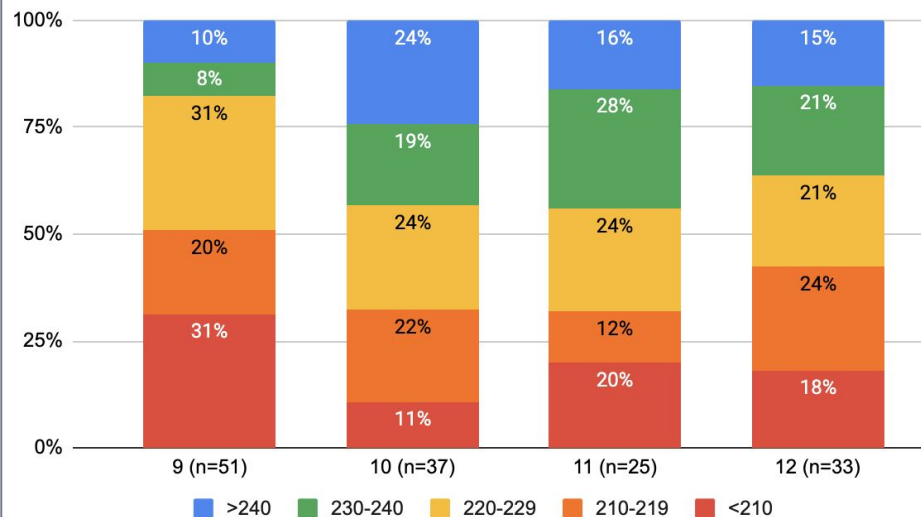


LS MAP Math Data W2023

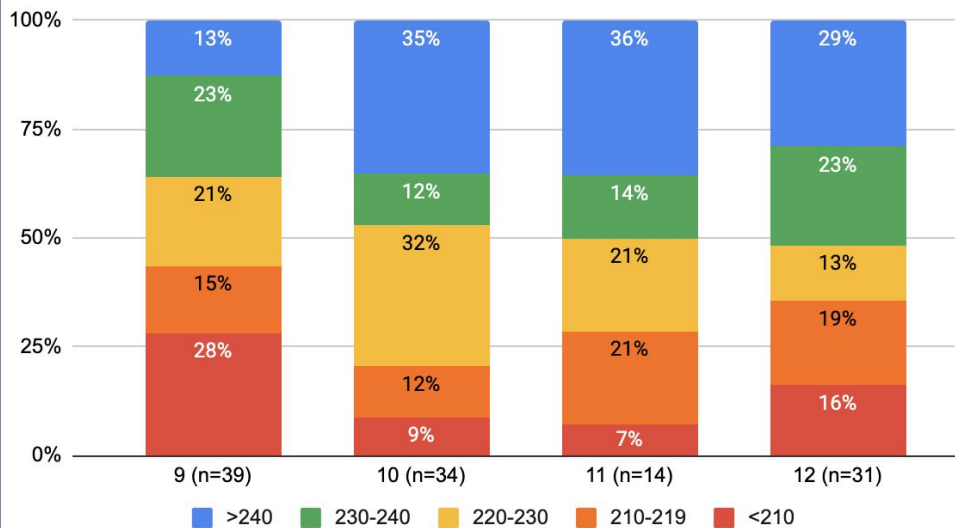


# US MAP Data Winter 2023

## US MAP Reading Data W2023



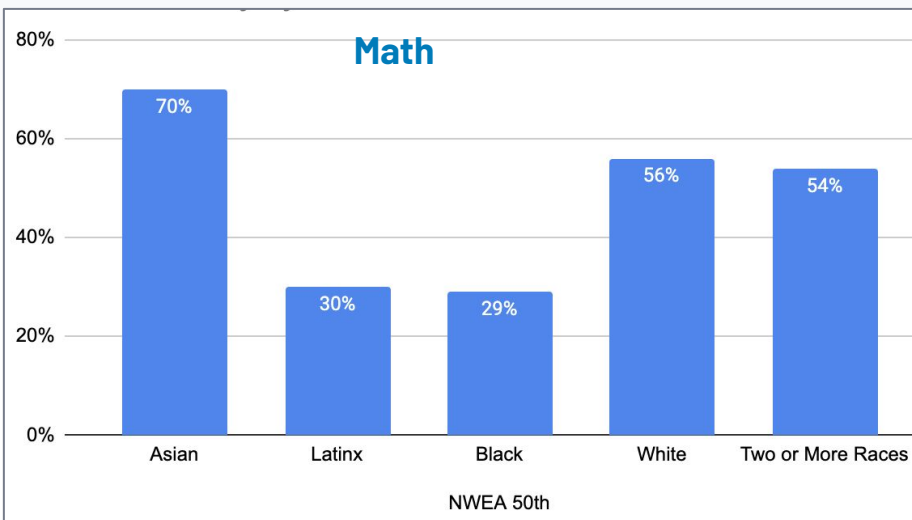
## US MAP Math Data W2023



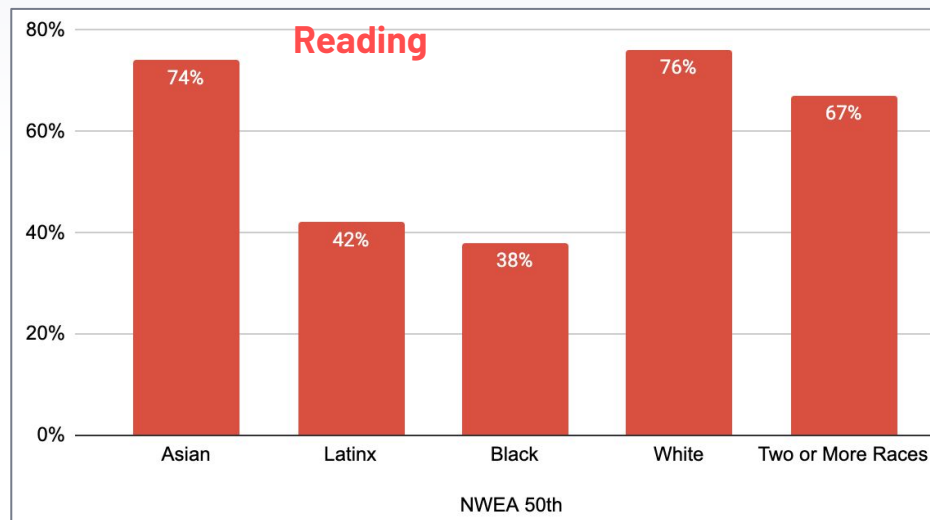


# MAP Proficiency by Subgroups Winter 2023

**Math**

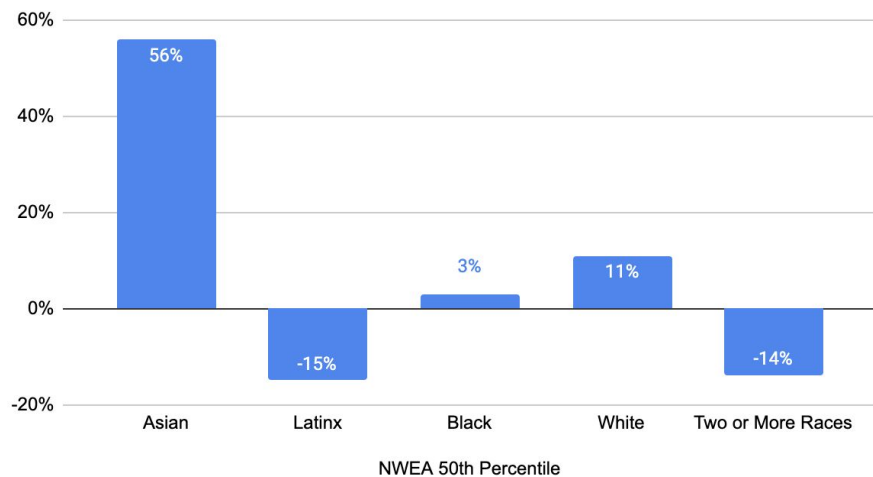


**Reading**

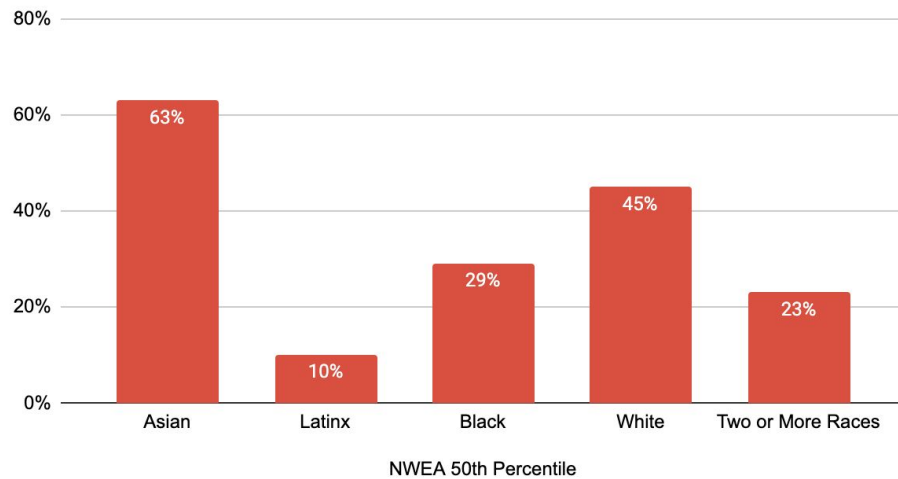


# MAP Proficiency Changes Winter 2022-Winter 2023

Math Proficiency Changes Winter 2022 to Winter 2023



ELA Proficiency Changes Winter 2022 to Winter 2023





# AP Scores - Spring 2023

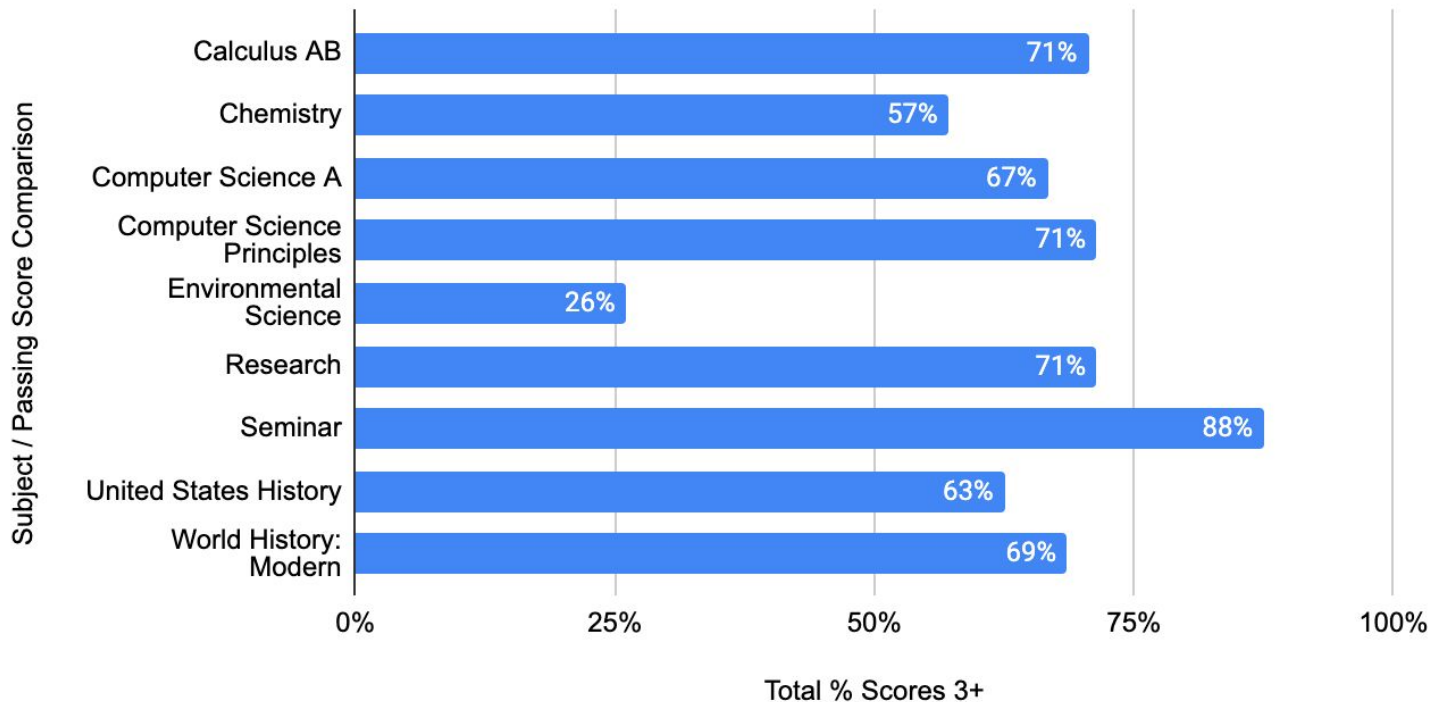
# AP Exams Scores 1-5 by Course

| SUM of Score  | Subject     |           |                    |                    |                       |          |         |            |               |
|---------------|-------------|-----------|--------------------|--------------------|-----------------------|----------|---------|------------|---------------|
| Score         | Calculus AB | Chemistry | Computer Science A | Computer Science P | Environmental Science | Research | Seminar | US History | World History |
| 1             | 12%         | 14%       | 0%                 | 14%                | 39%                   | 7%       | 13%     | 13%        | 9%            |
| 2             | 18%         | 29%       | 33%                | 14%                | 35%                   | 21%      | 0%      | 25%        | 23%           |
| 3             | 29%         | 43%       | 33%                | 43%                | 17%                   | 29%      | 50%     | 38%        | 34%           |
| 4             | 18%         | 0%        | 33%                | 14%                | 9%                    | 36%      | 25%     | 13%        | 26%           |
| 5             | 24%         | 14%       | 0%                 | 14%                | 0%                    | 7%       | 13%     | 13%        | 9%            |
| % Score 3 +   | 71%         | 57%       | 67%                | 71%                | 26%                   | 71%      | 88%     | 63%        | 69%           |
| Student Total | n=17        | n=7       | n=3                | n=14               | n=23                  | n=14     | n=8     | n=8        | n=35          |

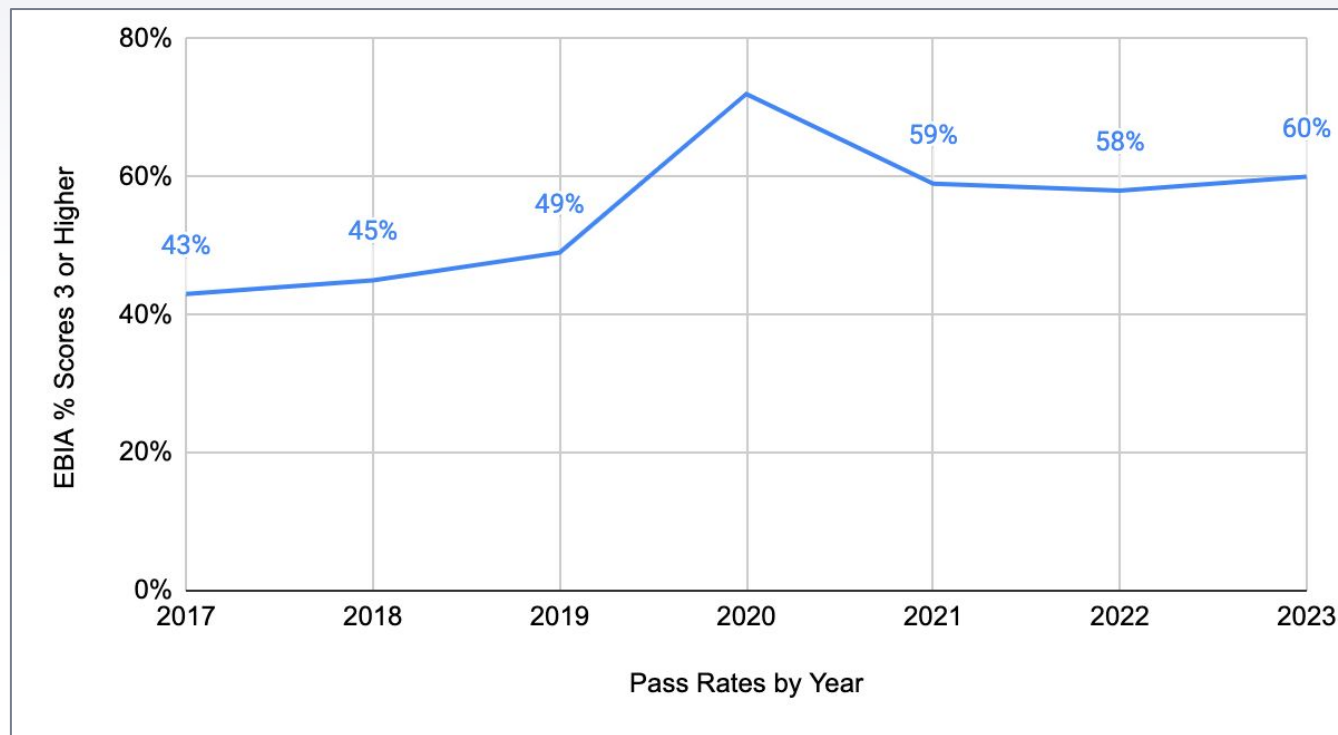
# AP Exams Passing Score % 3+

## EBIA AP Exams Passing Score Comparison

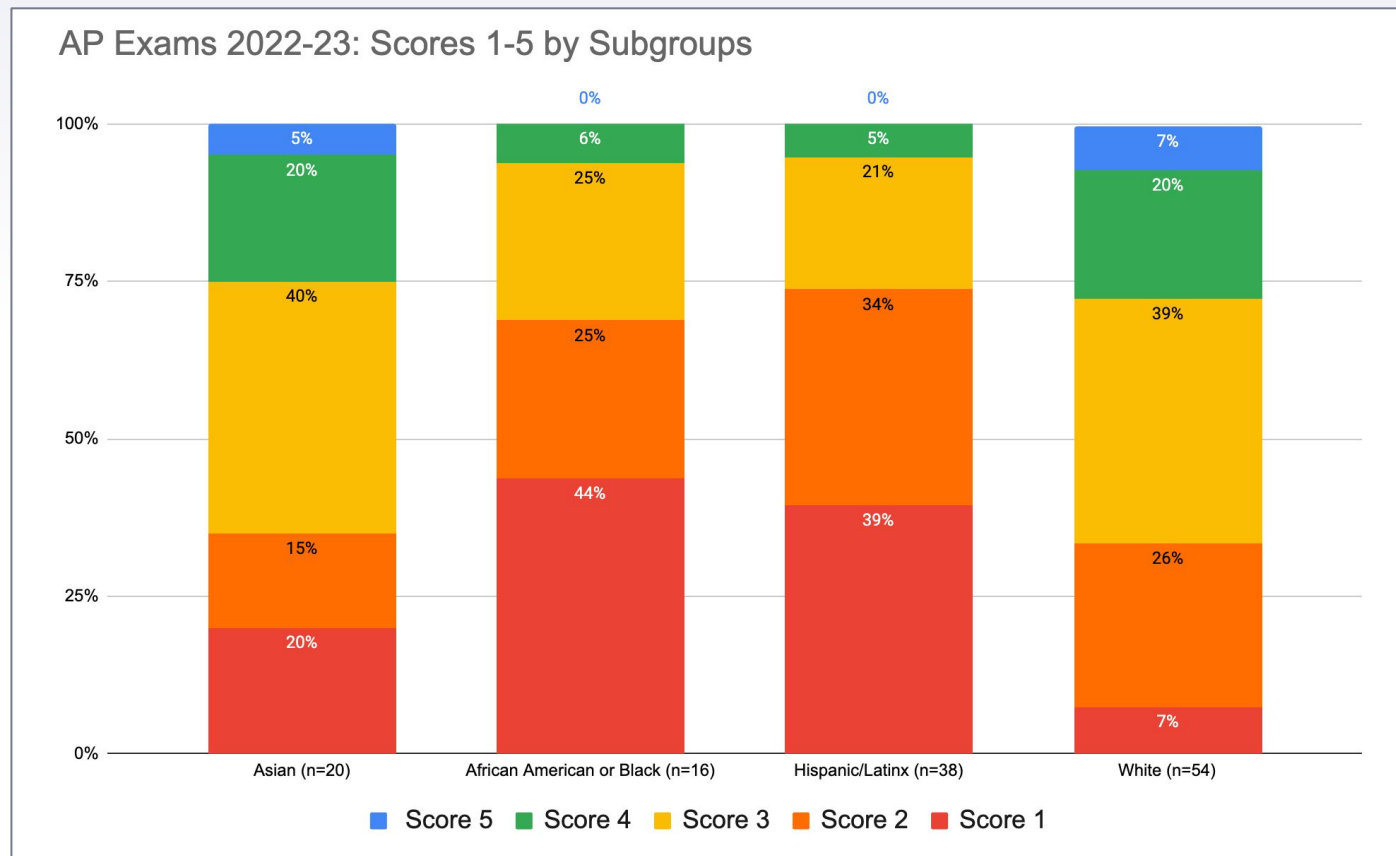
% Scores 3 or Higher 2022-2023



# AP Pass Rates by Year



# AP Exams Scores by Subgroups



# Key Action Steps in Response to Data

- Academic Support
  - Lexia pilot in 6th ELA
  - 6th pilot for Open Up Resources curriculum for Math
- Increase AP opportunities
  - AP Language, AP Physics, AP Spanish Language
- Increase focus on building identity safety and belonging
  - Professional Development - Identity Safe Classrooms
  - Focus on advisory/SEL curriculum
- Miranda to examine ILT time and Tier 2 intervention practices

