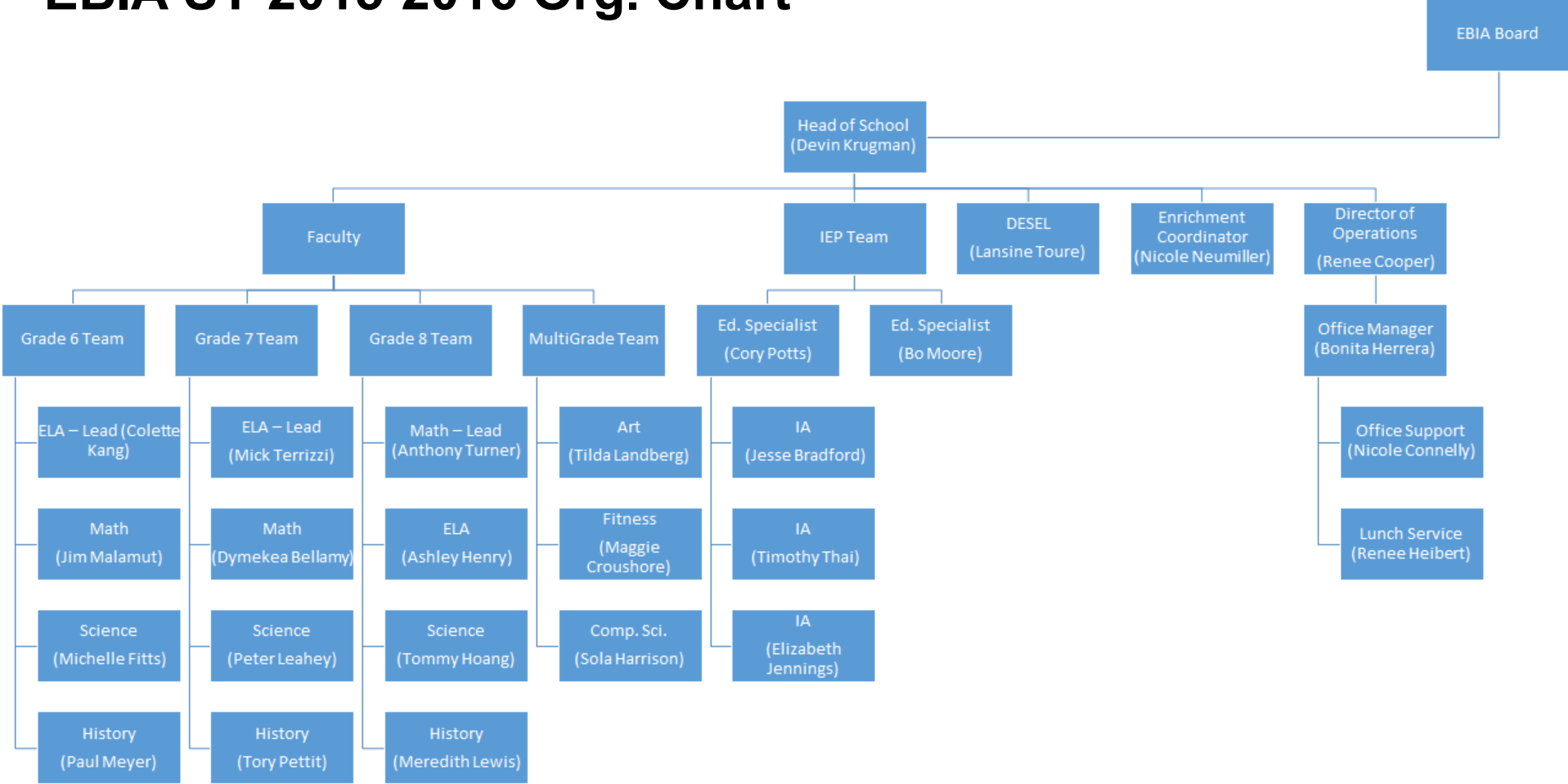


EBIA Team Updates

School Year 2015-2016

EBIA SY 2015-2016 Org. Chart



Summer Professional Development Goals & Objectives

- **Onboarding:** Mission, Vision and Model for New Staff
- **Collaborative Planning Time:** Grade Level, Department and Advisory Teams
- **SEL:** Advisory, PBIS and Restorative Justice Policies and Practices
- **HR:** Performance Management, Benefits and Systems
- **Emergency Training:** CPI, CPR, Emergency Drills
- **Orientation Week:** Activities Planning



2015-2016 Professional Development Plan

	2015					2016					
	August	September	October	November	December	January	February	March	April	May	June
Curricular Planning and Instructional Practice	UbD Yearlong Backmapping (Individual, GLT and Dept.)	Goal-Based Coaching and Evaluation									
		Department Specific PD - Text Selection, Practices Infusion, etc.									
		Curriculum Design: Inquiry and Questioning		Revisit and Revise Spring Plans Based on Fall Performance			Capstone Planning, Execution and Reflection				
		Year 3 Planning									
Model Implementation (PBL, BL, DT)	Model Overview	Student Collaboration and Communication	Design Thinking Integration	Building PBL into Daily Instruction		Student-Driven Project Design			Coaching Self-Directed Learners		
	Blended Learning Use and Troubleshooting										
Equity, Community and Inclusion	Teambuilding and Culture Setting	Supporting Personalized Need - PLPs, SSTs, IEP/504s, ELs, etc.			Health, Wellness and Sex Ed. Curriculum Development and Implementation			Coaching to the Finish: Ensuring Growth for All Students			
		Project Management and Self-Directed Learning Support		Culturally Relevant and Responsive Teaching (Identity Based Conversations)							

Academic Schedule Updates

School Year 2015-2016

Academic Growth Targets: Year 2

- **Reading Growth:** Increased comprehension growth for all students
 - Updated bell schedule
 - Achieve 3000 Purchase
- **Design Thinking Integration:** More consistent infusion across courses
 - Updated bell schedule
 - Science course redesign
- **SEL Inclusion:** More consistent and inclusive practices
 - DESEL hire
- **Intersession Alignment:** Stronger connection to mission and vision
 - Enrichment Coordinator hire

Academic Schedule Updates

School Year 2015-2016

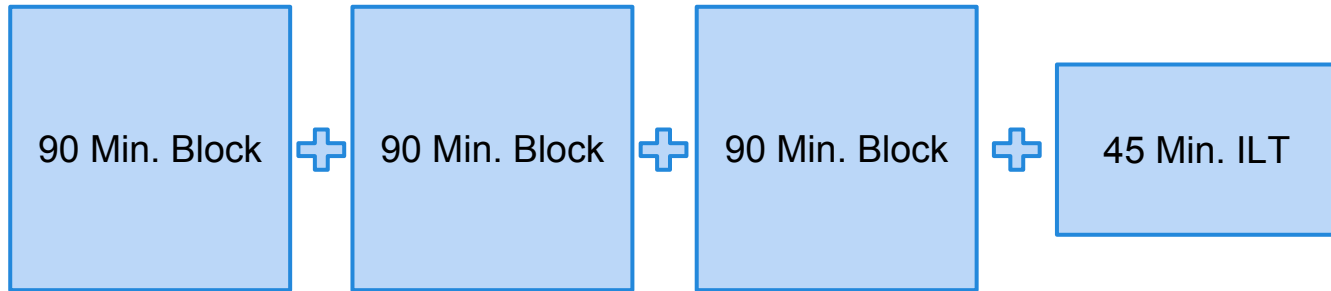
Sample Cohort Week

6A	Monday	Tuesday	Wednesday	Thursday	Friday
Advisory (9:00-9:25)	Advisory	Advisory	Advisory	Morning Meeting	Advisory
Period 1 (9:30-10:15)	Math - Room 6	Math - Room 6	SEL - Advisory	Science - Room 8	History - Room 4
Period 2 (10:15-11:00)			Math ILT - Room 6		
Period 3 (11:00-11:45)	LUNCH	LUNCH	LUNCH	LUNCH	LUNCH
Period 4 (11:45-12:30)	Science - Room 8	ELA ILT - Room 2	CS - Room 1	Hist. ILT - Room 4	ELA - Room 2
Period 5 (12:30-1:15)		CS - STEAM Room	ELA - Room 2	ELA - Room 2	
Period 6 (1:15-2:00)	CS - STEAM Room	Fit. - Great Hall			
Period 7 (2:00-2:45)	History - Room 4	Sci. ILT - Room 8	History - Room 4	Math - Room 6	Science - Room 8
Period 8 (2:45-3:30)		Inn. Lab - Room 1			

Overview

- **What's built into a week...**

- 25 min. advisory each morning (+ 45 min. SEL on Wednesday)
- Per cohort in a week for math, science, ELA, history...



- 2-3 45 min. periods per cohort a week for computer science, art and fitness
- Instructional aides push into blocks
- Differentiated blended learning platforms are used during ILT

Sample Teacher Week

	Monday	Tuesday	Wednesday	Thursday	Friday
Faculty (8:00-8:45)	GLT	Advisory Team	Department	GLT	All Faculty
Advisory (9-9:25)	Advisory	Advisory	Advisory	Morning Meeting	Advisory
Period 1 (9:30-10:15)	MB6A	MB6A	SEL	MB6C	Prep
Period 2 (10:15-11:00)			MI6A		MI6D
Period 3 (11:00-11:45)	LU	LU	LU	LU	LU
Period 4 (11:45-12:30)	Prep	MI6B	MB6C	MB6D	Prep
Period 5 (12:30-1:15)	MB6D	Prep			MB6B
Period 6 (1:15-2:00)		MI6C	Prep	Prep	
Period 7 (2:00-2:45)	MB6B	MB6D	MB6B	MB6A	MB6C
Period 8 (2:45-3:30)					
After-School (3:45-4:45)		Office Hours		Office Hours	

Why use a block schedule?

- Teachers see fewer students in a day, offering more time for individualized attention.
- Teachers and students have enough time for prepping, engaging in, reflecting on projects.
- Students have more reflection and less information to process over the course of a day.
- Model is a stronger alignment to college and career model.
- Provides enough time to flex between various instructional models.