



Compass Charter Schools

Regular Board Meeting
December 3, 2022

Our Mission and Vision

MISSION STATEMENT

Our mission is to inspire and develop innovative, creative, self-directed learners, one scholar at a time.

VISION STATEMENT

Our vision is to create a collaborative virtual learning community, inspiring scholars to appreciate the ways in which arts and sciences nurture a curiosity for life-long learning, and prepare scholars to take responsibility for their future success.



Opening Items

Call the Meeting to Order (Thomas Arnett)

Record Attendance and Guess (J.J. Lewis)

Welcoming Inclusion Activity (Lainie Rowell)

Board Packet: page 1



Welcoming Inclusion Activity

1. Please locate a **photo, song, video, or app** from your phone or mobile device that best represents you.
(We will share these shortly)
2. Find **someone you don't regularly talk to** in the room and introduce yourself if you don't already know them. (name, site and assignment)
3. **Take turns explaining why** you selected the photo, song, video or app (about 90 seconds each)



Consent Items

- Approval of the December 3, 2022 Regular Meeting Agenda
- Approval of the September 24, 2022 Special Meeting Minutes
- Approval of the October 24, 2022 Special Meeting Minutes
- Approval of the November 3, 2022 Special Meeting Minutes
- Approval of the November 14, 2022 Special Meeting Minutes
- Approval of the November 17, 2022 Special Meeting Minutes
- Approval of the Check Registry for September & October 2022
- Approval of Donations to Compass

Board Packet: pages 7-224



Organization of the Board

Confirmation of Scholar Representative

Board Packet: pages 225-226



Public Comment

Addressing the Board – Board meetings are meetings of the Board of Directors and will be held in a civil, orderly and respectful manner. All public comments or questions should be addressed to the Board through the Chair of the Board. To ensure an orderly meeting and an equal opportunity for each speaker, persons wishing to address the Board must complete a Speaker Request Card and submit it to Josue Garcia, Executive Assistant to the Superintendent. The Speaker Request Card must contain speaker name, contact number or email, and subject matter and submitted to the Executive Assistant to the Superintendent prior to the start of the meeting. Members of the public may address the Board on any matter within the Board's jurisdiction and have two (2) minutes each to do so. The total time of each subject will be fifteen (15) minutes, unless additional time is requested by a Board Member and approved by the Board.

The Board may not deliberate or take action on items that are not on the agenda. However, the Board may give direction to staff following a presentation. The Chair is in charge of the meeting and will maintain order, set the time limits for the speakers and the subject matter, and will have the prerogative to remove any person who is disruptive of the Board meeting. The Board of Directors may place limitations on the total time to be devoted to each topic if it finds that the numbers of speakers would impede the Board's ability to conduct its business in a timely manner. The Board of Directors may also allow for additional public comment and questions after reports and presentations if it deems necessary.



Guest Speaker

Marcy Kearney, Partner, Christy White Associates



Communications

Board Member Communication



Communications

Parent Advisory Council Update (Samantha Herrod)

Proud Parent
Compass Charter Schools

<https://www.compasscharters.org/about-us/parent-advisory-council/>

Board Packet: pages 228-230



Communications

Scholar Advisory Council Update (J.J. Lewis)

Proud Scholar

Compass Charter Schools

<https://www.compasscharters.org/about-us/scholar-leadership-council/>

Board Packet: pages 230-231



Superintendent's Report

Superintendent's Report



J.J. Lewis
[@lewis1jj](https://www.instagram.com/lewis1jj)

<https://www.compasscharters.org/about-us/superintendent-of-schools/>

Board Packet: pages 232-262



Presentations

Academic Support Department



Board Packet: pages 263-284



Questions?



Contact:

Erin Smith | Director of Academic Support

(805) 807-8176

esmith@compasscharters.org



Presentations

Special Education Department



Board Packet: pages 285-307



Questions?



Contact:

Amy Foody| Director of Special Education

(805) 917-6021

afoody@compasscharters.org



Academic Services Division

Academic Services Update



Dr. Aviva Ebner
[@aviva_ebner](https://twitter.com/aviva_ebner)

<https://www.compasscharters.org/about-us/academic-services/>

Board Packet: pages 308-310



Operations Division

Operations Division Update



Lisa Fishman
[@CCSCOO](https://twitter.com/CCSCOO)

<https://www.compasscharters.org/about-us/financial-services/>

Board Packet: pages 311-339



Operations Division

Review and Approval of the October Financial
Statements

Board Packet: pages 340-356



Operations Division

Review and Approval of the First Interim Reports

Board Packet: pages 357-370



Average Daily Attendance Driving Revenue

1st Interim

Enrollment reduction of 21, ADA increase of 62.87

	Yolo	San Diego	Los Angeles	Total
Enrollment By Grade				
Total Enrollment	672	819	888	2,379
Average Daily Attendance by Grade Range				
ADA Grades TK-3	258.77	283.71	305.32	847.80
ADA Grades 4-6	194.08	210.09	189.98	594.14
ADA Grades 7-8	107.82	126.64	139.57	374.03
ADA Grades 9-12	98.02	183.58	225.84	507.44
Average Overall Daily Attendance	658.68	804.02	860.71	2,323.41



	Yolo	San Diego	Los Angeles	Total
Enrollment By Grade				
Total Enrollment	681	816	903	2,400
Average Daily Attendance by Grade Range				
ADA Grades TK-3	250.35	270.24	280.46	801.05
ADA Grades 4-6	198.55	211.15	187.27	596.98
ADA Grades 7-8	106.47	123.98	132.09	362.54
ADA Grades 9-12	97.84	185.00	217.13	499.97
Average Overall Daily Attendance	653.22	790.38	816.94	2,260.54



	Yolo	San Diego	Los Angeles	Total
Average Daily Attendance by Grade Range				
ADA Grades TK-3	305.98	328.36	328.41	962.75
ADA Grades 4-6	172.66	224.72	218.03	615.40
ADA Grades 7-8	113.19	127.86	146.56	387.60
ADA Grades 9-12	84.41	204.37	200.84	489.63
Average Overall Daily Attendance	676.24	885.30	893.84	2,455.38



Current ADA %s used, driving ADA increases

1st Interim Budget Summary

FY23

Variance from FY23 September
Revise: \$295,814

Compass Charter Schools Budget Summary

2022-23 Budget- 1st Interim 12.84% COLA

75,417	42,329	112,011
Ending position after transfer	Ending position after transfer	Ending position after transfer



				ADA
FY23 Adopted Budget Ending Position	\$ (74,539)	\$ 6,385	\$ (202,489)	\$ (270,643)
				2,455,38
				\$ - Enrollment
				\$ -
				2,379,00
				2,323,41

	Yolo	San Diego	Los Angeles	Total
Revenue	27.00%	33.70%	39.29%	**Excludes OCLC revenues for % calc**
State	7,523,507	9,839,224	10,411,330	27,774,062
Federal	348,366	954,619	1,114,606	2,417,591
Local	551,143	724,450	730,194	2,005,786
Total Revenue	\$ 8,423,016	\$ 11,518,293	\$ 12,256,130	\$ 32,197,439

Expenses	Yolo	San Diego	Los Angeles	Total
1000 Certificated Salaries	3,421,163 40.7%	4,725,469 41.5%	4,790,615 40.2%	12,937,248 40.4%
2000 Classified Salaries	1,163,308 13.8%	1,507,559 13.2%	1,272,546 10.7%	4,299,834 13.4%
3000 Benefits	1,418,570 16.9%	1,977,258 17.3%	1,976,317 16.6%	5,321,493 16.6%
Total Personnel Expense	6,003,041 71.4%	8,210,287 72.0%	8,039,478 67.5%	22,558,575 70.5%
4000 Books and Supplies	1,192,501 14.2%	1,491,953 13.1%	1,925,435 16.2%	4,609,889 14.4%
5000 Services and Other Operating Expenses	1,207,796 14.4%	1,696,329 14.9%	1,948,040 16.4%	4,852,166 15.2%
6000 Capital Outlay				
7000 Other Outgoing				
Total Expenses	\$ 8,403,339	\$ 11,398,569	\$ 11,912,983	\$ 32,020,630

Surplus / (Deficit)	\$ 19,677	\$ 119,724	\$ 343,177	\$ 482,578
As a % of LCFF revenue	0.28%	1.33%	3.52%	
Estimated Beginning Balance	\$ 630,239	\$ 856,283	\$ 863,437	\$ 8,256,843
CMO (Contribution)/Draw down:	\$ 55,740	\$ (77,396)	\$ (231,166)	\$ (252,822)
Ending Balance	\$ 705,656	\$ 898,612	\$ 975,448	\$ 8,509,665
As a % of LCFF Revenue	10.0%	10.0%	10.0%	
Consolidated Fund Balance				\$ 11,089,380

Sb-740 Funding Determination Test:	Yolo	San Diego	Los Angeles
Certificated Salaries (40% req.):	69.25%	74.19%	70.15%
Instructional Costs (80% req.):	81.47%	81.20%	82.27%
Cert Salaries Met/Not Met:	Met	Met	Met
Instr. Costs Met/Not Met:	Met	Met	Met

Changes:
 LCFF Increase
 Enrollment decline (2379)
 Lower Options scholar (1792) cost in 4100
 Benefits savings \$150k- updated elections
 Arts and Music Grant offset STRs increase % \$55k
 PD reduction \$50k
 Assessment (5602) \$80k savings- virtual testing
 Prof Consulting \$50k savings
 Advertising \$50k savings
 Additional \$130k in ESSER 3 revenues- earned by in house Psych
 CSI adjustments \$350k
 Arts and Music Grant offset Stipends \$484k
 Updated ADA %s
 LCFF calculator 23.2c

1st Interim Budget: Los Angeles

FY23

ADA variance from September Revise: 43.77 increase

Compass Charter Schools Budget Summary		112,011
2022-23 Budget- 1st Interim 12.84% COLA		Ending position after transfer
FY23 Adopted Budget Ending Position		\$ (202,489)
Los Angeles		
Revenue		39.29% **Exc
State		10,411,330
Federal		1,114,606
Local		730,194
Total Revenue		\$ 12,256,130
Expenses		
1000	Certificated Salaries	4,790,615 40.2%
2000	Classified Salaries	1,272,546 10.7%
3000	Benefits	1,976,317 16.6%
	Total Personnel Expense	8,039,478 67.5%
4000	Books and Supplies	1,925,435 16.2%
5000	Services and Other Operating Expenses	1,948,040 16.4%
6000	Capital Outlay	
7000	Other Outgoing	
Total Expenses		\$ 11,912,953
Surplus / (Deficit)		\$ 343,177
As a % of LCFF revenue		3.52%
Estimated Beginning Balance		\$ 863,437
CMO (Contribution)/Draw down:		\$ (231,166)
Ending Balance		\$ 975,448
As a % of LCFF Revenue		10.0%
Consolidated Fund Balance		
Sb-740 Funding Determination Test:		
	Certificated Salaries (40% req.):	70.15%
	Instructional Costs (80% req.):	82.27%
	Cert Salaries Met/Not Met:	Met
	Instr. Costs Met/Not Met:	Met

	Yolo	San Diego	Los Angeles	Total
Enrollment By Grade				
Total Enrollment	672	819	888	2,379
Average Daily Attendance by Grade Range				
ADA Grades TK-3	258.77	283.71	305.32	847.80
ADA Grades 4-6	194.08	210.09	189.98	594.14
ADA Grades 7-8	107.82	126.64	139.57	374.03
ADA Grades 9-12	98.02	183.58	225.84	507.44
Average Overall Daily Attendance	658.68	804.02	860.71	2,323.41

	Yolo	San Diego	Los Angeles	Total
Enrollment By Grade				
Total Enrollment	681	816	903	2,400
Average Daily Attendance by Grade Range				
ADA Grades TK-3	250.35	270.24	280.46	801.05
ADA Grades 4-6	198.55	211.15	187.27	596.98
ADA Grades 7-8	106.47	123.98	132.09	362.54
ADA Grades 9-12	97.84	185.00	217.13	499.97
Average Overall Daily Attendance	653.22	790.38	816.94	2,260.54

	Yolo	San Diego	Los Angeles	Total
Average Daily Attendance by Grade Range				
ADA Grades TK-3	305.98	328.36	328.41	962.75
ADA Grades 4-6	172.66	224.72	218.03	615.40
ADA Grades 7-8	113.19	127.86	146.56	387.60
ADA Grades 9-12	84.41	204.37	200.84	489.63
Average Overall Daily Attendance	676.24	885.30	893.84	2,455.38

Current ADA %s used, driving ADA increases

FY23 Sept revise ADA

FY23 INITIAL ADA

1st Interim

1st Interim Budget: San Diego

FY23

ADA variance from September Revise: 13.64 increase

Compass Charter Schools Budget Summary		
	42,329	
2022-23 Budget- 1st Interim 12.84% COLA	Ending position after transfer	
FY23 Adopted Budget Ending Position	\$ 6,385	
San Diego		
Revenue	33.70%	
State	9,839,224	
Federal	954,619	
Local	724,450	
Total Revenue	\$ 11,518,293	
Expenses		
1000 Certificated Salaries	4,725,469	41.5%
2000 Classified Salaries	1,507,559	13.2%
3000 Benefits	1,977,258	17.3%
<i>Total Personnel Expense</i>	<i>8,210,287</i>	<i>72.0%</i>
4000 Books and Supplies	1,491,953	13.1%
5000 Services and Other Operating Expenses	1,696,329	14.9%
6000 Capital Outlay		
7000 Other Outgoing		
Total Expenses	\$ 11,398,569	
Surplus / (Deficit)	\$ 119,724	
As a % of LCFF revenue	1.33%	
Estimated Beginning Balance	\$ 856,283	
CMO (Contribution)/Draw down:	\$ (77,396)	
Ending Balance	\$ 898,612	
As a % of LCFF Revenue	10.0%	
Consolidated Fund Balance		
Sb-740 Funding Determination Test:		
Certificated Salaries (40% req.):	74.19%	
Instructional Costs (80% req.):	81.20%	
Cert Salaries Met/Not Met:	Met	
Instr. Costs Met/Not Met:	Met	

	Yolo	San Diego	Los Angeles	Total
Enrollment By Grade				
Total Enrollment	672	819	888	2,379
Average Daily Attendance by Grade Range				
ADA Grades TK-3	258.77	283.71	305.32	847.80
ADA Grades 4-6	194.08	210.09	189.98	594.14
ADA Grades 7-8	107.82	126.64	139.57	374.03
ADA Grades 9-12	98.02	183.58	225.84	507.44
Average Overall Daily Attendance	658.68	804.02	860.71	2,323.41



Current ADA %s used, driving ADA increases



	Yolo	San Diego	Los Angeles	Total
Enrollment By Grade				
Total Enrollment	681	816	903	2,400
Average Daily Attendance by Grade Range				
ADA Grades TK-3	250.35	270.24	280.46	801.05
ADA Grades 4-6	198.55	211.15	187.27	596.98
ADA Grades 7-8	106.47	123.98	132.09	362.54
ADA Grades 9-12	97.84	185.00	217.13	499.97
Average Overall Daily Attendance	653.22	790.38	816.94	2,260.54



	Yolo	San Diego	Los Angeles	Total
Average Daily Attendance by Grade Range				
ADA Grades TK-3	305.98	328.36	328.41	962.75
ADA Grades 4-6	172.66	224.72	218.03	615.40
ADA Grades 7-8	113.19	127.86	146.56	387.60
ADA Grades 9-12	84.41	204.37	200.84	489.63
Average Overall Daily Attendance	676.24	885.30	893.84	2,455.38

1st Interim Budget: Yolo

FY23

ADA variance from September Revise: 5.46 increase

Compass Charter Schools Budget Summary		75,417
2022-23 Budget- 1st Interim 12.84% COLA	Ending position after transfer	
	FY23 Adopted Budget Ending Position	\$ (74,539)
	Yolo	
Revenue	27.00%	
State		7,523,507
Federal		348,366
Local		551,143
Total Revenue		\$ 8,423,016
Expenses		
1000 Certificated Salaries	3,421,163	40.7%
2000 Classified Salaries	1,163,308	13.8%
3000 Benefits	1,418,570	16.9%
	Total Personnel Expense	6,003,041 71.4%
4000 Books and Supplies	1,192,501	14.2%
5000 Services and Other Operating Expenses	1,207,796	14.4%
6000 Capital Outlay		
7000 Other Outgoing		
Total Expenses	\$ 8,403,339	
Surplus / (Deficit)	\$ 19,677	
As a % of LCFF revenue		0.28%
Estimated Beginning Balance	\$ 630,239	
CMO (Contribution)/Draw down:	\$ 55,740	
Ending Balance	\$ 705,656	
As a % of LCFF Revenue		10.0%
Consolidated Fund Balance		
Sb-740 Funding Determination Test:		
Certificated Salaries (40% req.):	69.25%	
Instructional Costs (80% req.):	81.47%	
Cert Salaries Met/Not Met:	Met	
Instr. Costs Met/Not Met:	Met	

	Yolo	San Diego	Los Angeles	Total
Enrollment By Grade				
Total Enrollment	672	819	888	2,379
Average Daily Attendance by Grade Range				
ADA Grades TK-3	258.77	283.71	305.32	847.80
ADA Grades 4-6	194.08	210.09	189.98	594.14
ADA Grades 7-8	107.82	126.64	139.57	374.03
ADA Grades 9-12	98.02	183.58	225.84	507.44
Average Overall Daily Attendance	658.68	804.02	860.71	2,323.41



Current ADA %s used, driving ADA increases



	Yolo	San Diego	Los Angeles	Total
Enrollment By Grade				
Total Enrollment	681	816	903	2,400
Average Daily Attendance by Grade Range				
ADA Grades TK-3	250.35	270.24	280.46	801.05
ADA Grades 4-6	198.55	211.15	187.27	596.98
ADA Grades 7-8	106.47	123.98	132.09	362.54
ADA Grades 9-12	97.84	185.00	217.13	499.97
Average Overall Daily Attendance	653.22	790.38	816.94	2,260.54



	Yolo	San Diego	Los Angeles	Total
Average Daily Attendance by Grade Range				
ADA Grades TK-3	305.98	328.36	328.41	962.75
ADA Grades 4-6	172.66	224.72	218.03	615.40
ADA Grades 7-8	113.19	127.86	146.56	387.60
ADA Grades 9-12	84.41	204.37	200.84	489.63
Average Overall Daily Attendance	676.24	885.30	893.84	2,455.38

Operations Division

Review and Approval of the Arts, Music, and
Instructional Materials Discretionary Block Grant Plans

Board Packet: pages 371-389



Agenda

- Mission and Vision
- Values
- Arts, Music, and Instructional Materials
Discretionary Block Grant Plan Review
- Q & A



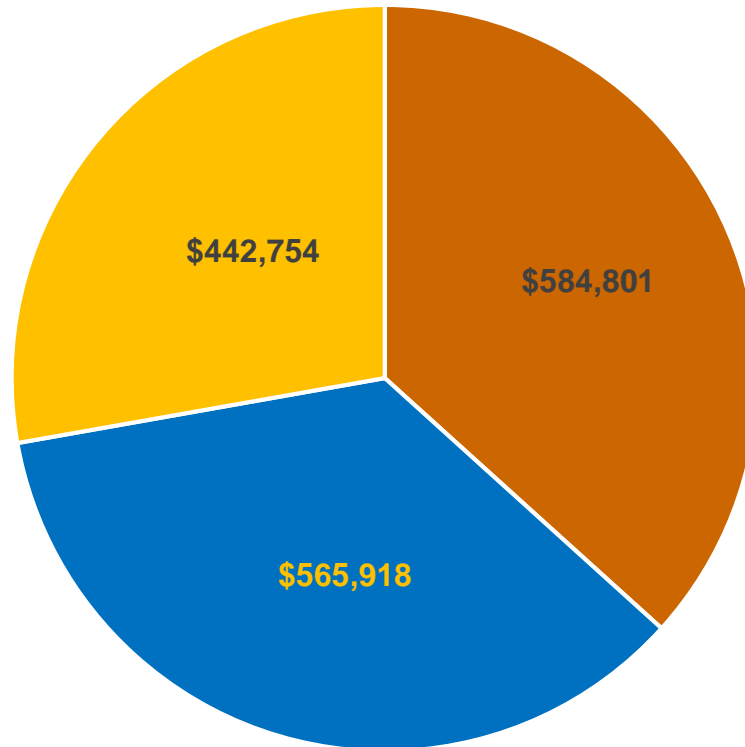
Arts, Music, and Instructional Materials Discretionary Block Grant Plan (AMIM)

AMIM Grant funds are allocated to LEAs for five (5) purposes enumerated in Section 134(a) of Chapter 2 of the Statutes of 2022, as amended by Section 56 of AB 185, which may be briefly summarized as: (1) obtaining standards-aligned professional development and instructional materials for specified subject areas; (2) obtaining professional development and instructional materials for improving school climate; (3) developing diverse, culturally relevant and multilingual school library book collections; (4) operational costs, including retirement and health care cost increases; and (5) COVID-19-related costs necessary to keep pupils and staff safe and schools open for in-person instruction.

Funds may be encumbered during the 2022–23, 2023–24, 2024–25, and 2025-26 fiscal years.



AMIM Plan Grant Allocations



■ Los Angeles ■ San Diego ■ Yolo



AMIM Planned Activity

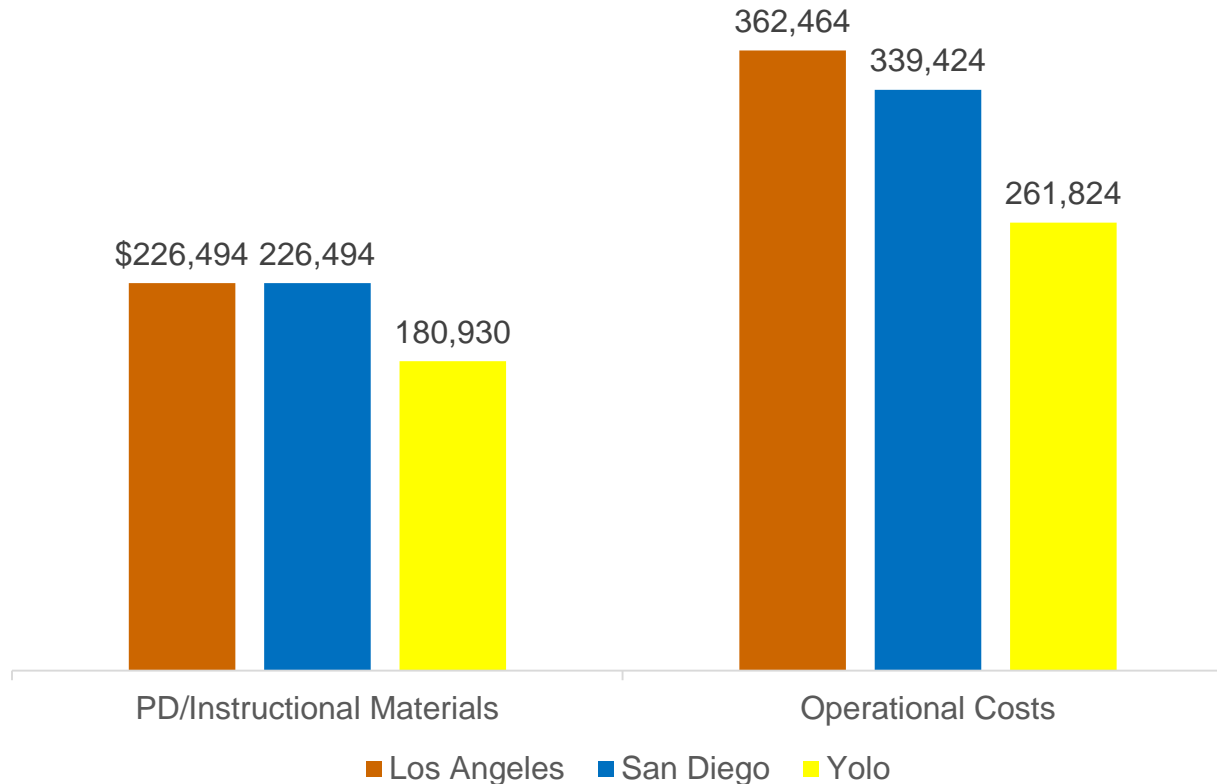
- Operational Costs - A portion of the grant in the 22-23 and 23-24 school years will be used to continue to offer staff longevity stipends in an effort to retain quality, committed staff. Currently, a longevity stipend is offered after 2 years of service with an increase after 5 years.

In the 24-25 and 25-26 School Years:

- Professional Development for Visual and Performing Arts
- Art Education Core curriculum instructional materials, the acquisition of standards - aligned instructional materials including but not limited to Accelerate Ed elementary art courses (or equivalent) plus art supply kits



AMIM Plan Grant Planned Expenditures



Questions?



Contact:

Lisa Fishman | Chief Operations Officer

(818) 732-4692

lfishman@compasscharters.org



People Division

People Division Update



Sophie Trivino
[@CCSHRGuru](https://www.compasscharters.org/about-us/hr-services/)

<https://www.compasscharters.org/about-us/hr-services/>

Board Packet: pages 390-392



Executive

Review and Approval of the 2021-22 Audit

Board Packet: pages 393-436



Executive

Review and Approval of the Marketing Agreement with
Charter School Capital

Board Packet: pages 437-495



Executive

Review and Approval of the 2023-2025 Fixed Term
Employment Agreement for the Superintendent

Board Packet: pages 496-501



Closing Items

The next regular meeting of the Board of Directors will be Saturday, December 3, 2022 at 10 am. Agenda items will include:

- Approve 2021-22 Audit
- Approve First Interim Reports
- Department Presentations
 - Academic Support Department
 - Special Education Department

Board Packet: pages 5-6



Special Presentation



Closing Items

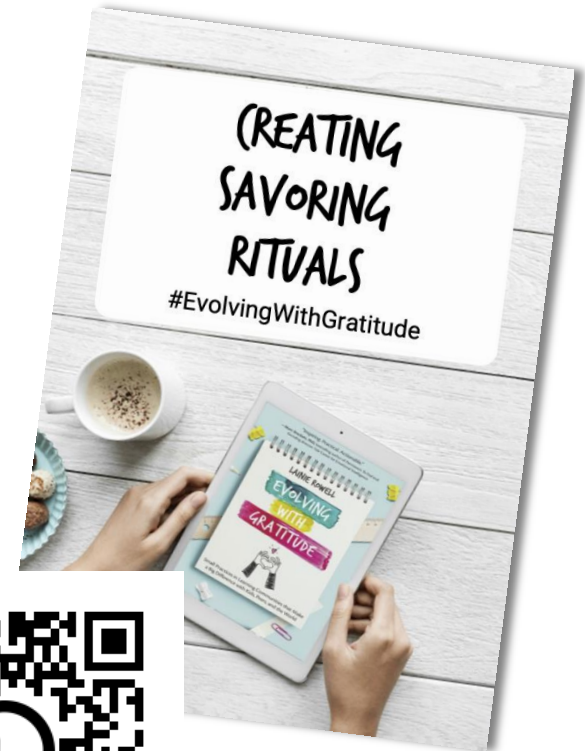
The next regular meeting of the Board of Directors will be Saturday, January 28, 2023 at 10 am. Agenda items will include:

- Approve 2021-22 School Accountability Report Cards
- Approve 2023-24 Academic Calendar
- Approve School Safety Plan Update
- Department Presentations
 - Counseling Services
 - Operations

Board Packet: page 6



Optimistic Closure Activity



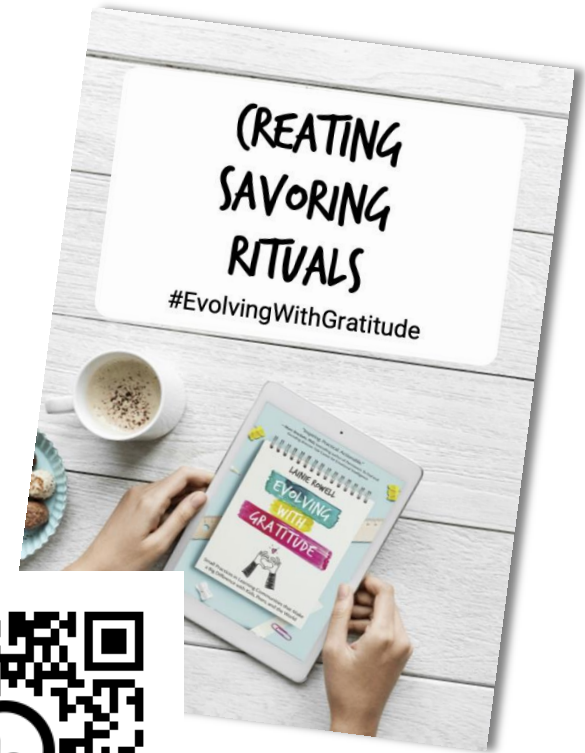
bit.ly/ewgsavor



Optimistic Closure Activity

Spend a couple moments thinking about the everyday things that bring you joy.

List those activities.



bit.ly/ewgsavor



Optimistic Closure Activity

Share at least one of the activities you listed with someone next to you and discuss...

If you committed to savoring this activity each day for at least two weeks, how might this impact your life?

