



## Project Proposal

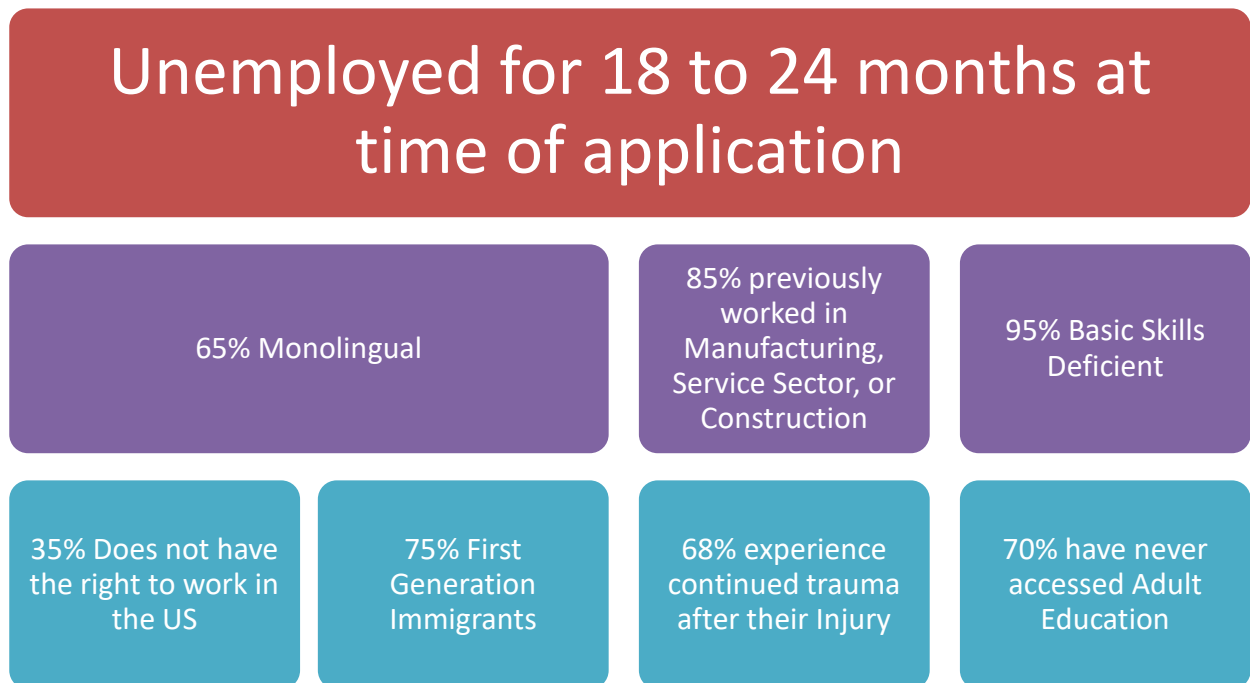
Pretzel Workforce Development is an organization that provides services that allow Local Educational Agencies (LEAs) to provide training to targeted vulnerable populations. Pretzel braids the resources of education and workforce development systems by bridging the gaps using a technology-based approach to service delivery.

Pretzel is seeking an LEA Educational Partner to enter into an agreement for service to provide online re-training for injured workers using Supplemental Job Displacement Benefits provided by the injured worker's insurance carrier.

### About Injured Workers

An injured worker is an individual who suffers a debilitating injury through the course of their routine job functions under the supervision of their employer. After suffering the physical trauma of a career-ending injury, an injured worker becomes disconnected from their social and familial communities. The diminished capacity to participate in the workforce often places extreme stress on every facet of an individual's life.

### Injured Worker Profile





## How We Serve Them

Pretzel creates a linkage between this disconnected population and public education partners. By designing course curricula that are delivered in a manner that addresses the barriers the injured worker population faces and providing intensive case management support through its workforce development specialists, Pretzel creates a unique opportunity for Injured workers to exercise their rights and receive all the benefits due to them under the Supplemental Job Displacement Benefit program and the Return to Work Supplement Program.

- The Supplemental Job Displacement Benefit (SJDB) comes in the form of a non-transferable voucher that can be used to pay for educational retraining or skill enhancement at state-approved or accredited schools.
- The voucher amount is \$4,500 for all levels of permanent disability and can be used for training at a California public school or any other provider listed on the state's eligible training provider list. Injured workers may also directly access up to \$1,500 to support the purchase computer equipment and other approved miscellaneous expenses.
- The Return To Work supplement is an additional \$5,000 payment made directly to the Injured Worker by the State of California for using their SJDB. Payments are made by the Division of Workers Compensation from a standalone fund set up by the governor's office.

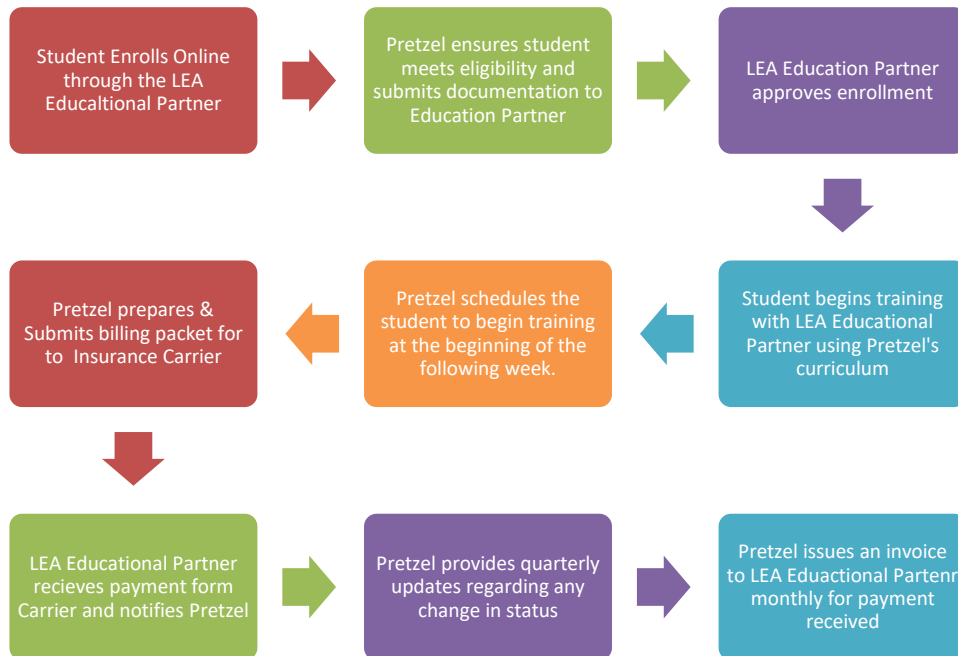
Using distributed teams and an expansive network of community partner organizations, Pretzel is able to expand our LEA Educational Partners service delivery area throughout California.



## Sample Training Programs



## Proposed Workflow





## Proposed Terms

- Two year term, 90-day notice of cancelation
- Pretzel Receives \$2,900 per student management fee
- Pretzel indemnifies LEA Educational Partner for any claims
- LEA Educational Partner maintains full access to all student records (cloud based)

## LEA Education Partner Responsibilities

- Approve student enrollment
- Receive payments
- Employ instructors
- Pay Pretzel management fee
- Maintain a refund reserve and issue refunds as requested
- Issue certificates of completion upon receiving supporting documents from Pretzel
- Maintain its status as a California Public School

## Sample Program Annual Budget

Revenue		Notes	
	Revenue	\$2,430,000	45 students x 12 months x \$4,500
Expense			
	Management fee to Pretzel	\$1,566,000	540 students x \$2,900
	Staff Salaries & Benefits	\$129,600	72 hours x 45 sessions = 3240 hours; 3240 hours x \$40
	<u>Net Income</u>	<u>\$734,400</u>	

## Contact Information

Pablo Artaza  
Executive Director  
Pretzel Workforce Development  
Email: [pablo@pretzelwd.com](mailto:pablo@pretzelwd.com)  
Direct: [\(323\) 973-0198](tel:(323)973-0198)