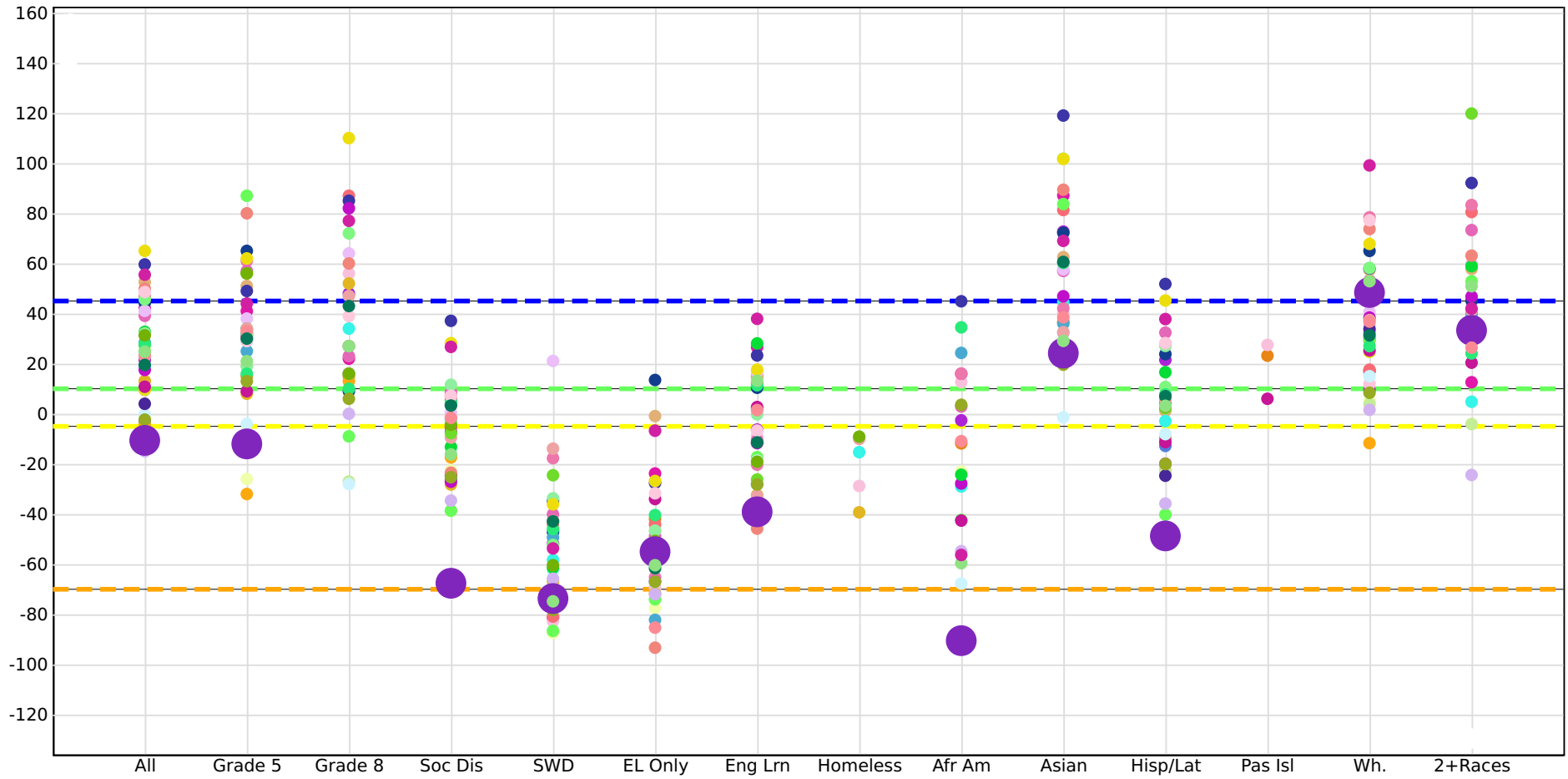




California Comparison Schools Report

English Language Arts: Urban Montessori Charter



English Language Arts: School Data

Attribute	All	Grade 5	Grade 8	Soc Dis	SWD	EL Only	Eng Lrn	Home less	Afr Am	Asian	Hisp/ Lat	Pas Isl	Wh.	2+ Races
Number of Students	195	36	8	63	28	38	49		41	14	51		61	26
Color 2019	O			O			O		R		O		B	
Points to Next Color	3			3			3		3		3			
Points to Next Status Level	-6			56	38	69	37		5	13	29			-8
Change 2018 to 2019	-12			-9	19	10	-2		-17	-7	-18		-2	-19
Status 2018	1			-61	-108	-74	-42		-75	32	-34		50	53
Status 2019	-11	-12		-68	-74	-55	-39		-91	24	-49		48	33
Comparison School Median Status 2019	25			-5	-60	-55	-9	-15	-23	47	3	23	35	41
Comparison School 25th%	10			-23	-75	-67	-28	-29	-55	36	-20	6	18	30
Comparison School 75th%	42			4	-43	-34	12	-10	13	73	11	28	53	59
Statewide Median Status 2019	-10			-24	-86	-86	-40	-45	-41	57	-22	-35	24	37
DASS Only: Statewide Median Status 2019	-100			-106	-102	-152	-140	-107	-95	-45	-105	N/A	-58	-16

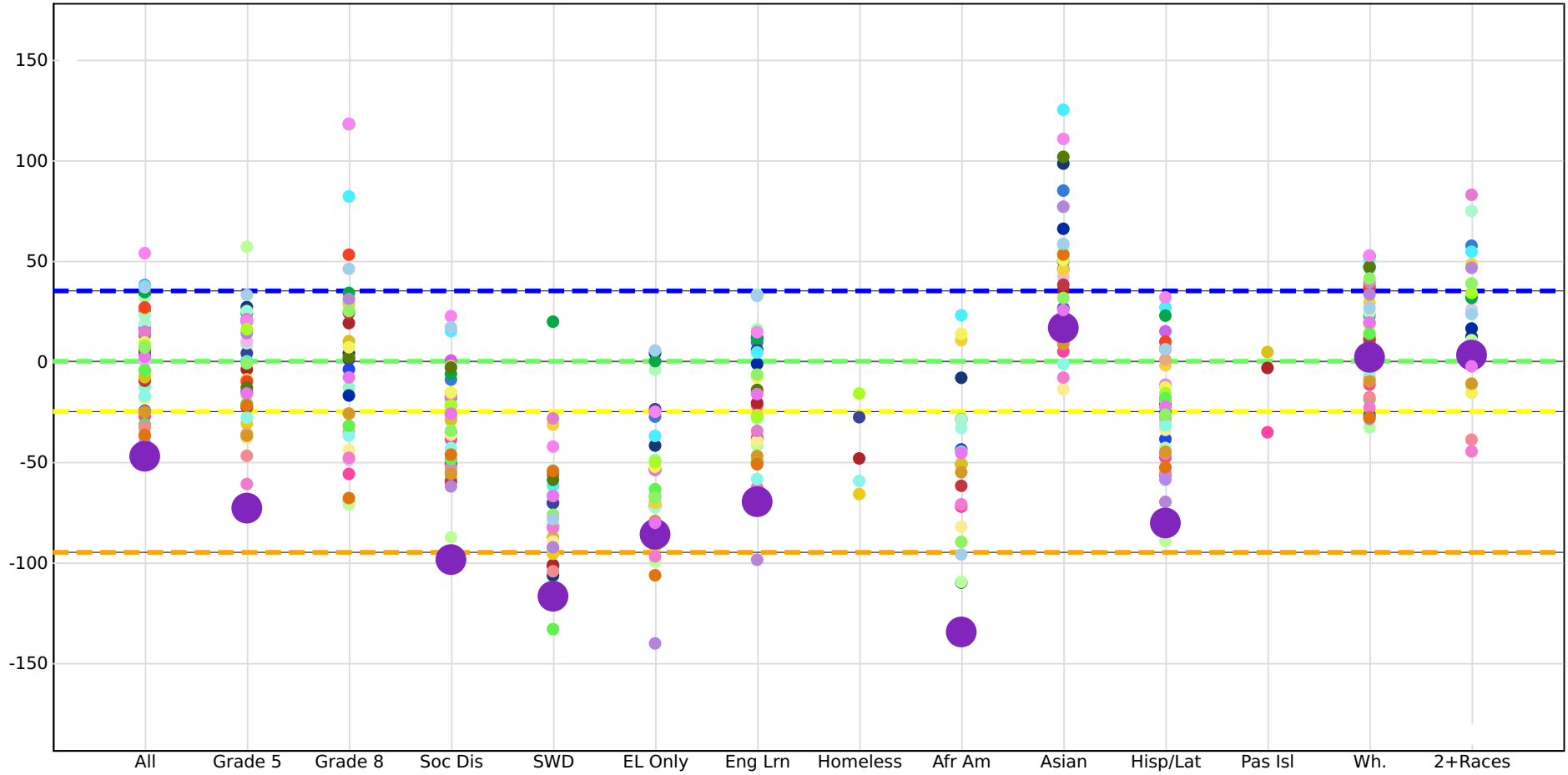
English Language Arts: Status 2019 of Comparison Schools

N	School	All	Grade 5	Grade 8	Soc Dis	SWD	EL Only	Eng Lrn	Home less	Afr Am	Asian	Hisp/ Lat	Pas Isl	Wh.	2+ Races
1	Park View Elementary	65	62	110	28	-36	-27	18			102	45		68	
2	Discovery Charter	60	49	85	37	-35	-28	23		45	119	52		58	92
3	Yu (Alice Fong) Elementary	56	44	77	27	-54	-7	38		-56	69	38		99	42
4	Cadence Park	53	51		8		-1	15			63	1		57	58
5	North Shoreview Montessori	50	80	60	-24	-44	-93	-46			89	-20		74	63
6	Southside Elementary	49	29	39	7	-77	-32	-7				28		77	
7	Brightwood Elementary	47	30	87	6	-81	-44	12			81	2		18	81
8	Los Olivos Elementary	46	32	72	-4	-52						11		58	
9	Citizens of the World Charter School Mar Vista	44	61		-2	-18	-65	-20		16	42	3		78	83
10	Creative Arts Charter	44	65	9	-25	-47	14	10		-93	72	24		65	45
11	Brookside	42	41	22	-5	-72	-24	27		16	87	7		53	13
12	Franklin Elementary	41	38	64	0	21	-7	17			58	28		41	60
13	Dr. Bernice Jameson Todd Academy	39	57	23	9	-40	-49	-11		3	57	32		44	73

(continued)

N	School	All	Grade 5	Grade 8	Soc Dis	SWD	EL Only	Eng Lrn	Home less	Afr Am	Asian	Hisp/ Lat	Pas Isl	Wh.	2+ Races
14	Goethe International Charter	33	34		-13	-62		28		-24		17		52	59
15	McCabe Elementary	32	19	16	12	-34	-47	0			102	27		52	
16	San Pasqual Union Elementary	31	56	16	-4	-60	-51	-19	-9			3		48	37
17	Gold River Discovery Center K-8	28	25	27	4	-49	-82	-28		24	36	4		32	40
18	River Islands Technology Academy II	28	16	10	5	-46	-40	11		35	60	8		27	24
19	Bridgeway Island Elementary	28	19	56	-5	-83	-70	-9	-29	13	40	7	28	35	30
20	Northlake Hills Elementary	27	56		-8	-25	-52	-26				2		47	120
21	Willow Creek Academy	25	21	27	-16	-75	-60	13		-60	29	3		53	51
22	Don Callejon	25	87	-9	-39	-87	-74	-17		-42	84	-40		30	53
23	Westlake Charter	24	33	27	-2	-43	-85	2		-11	39	7		37	26
24	McSwain Elementary	23	34	47	-10	-14	-55	-33	-10		33	6		37	41
25	Antioch Charter Academy	22	31	48	7	-81		-6		-3	73	22		10	
26	Whitmore Charter School of Art & Technology	20	30	43	3	-43	-62	-11			61	7		31	
27	Cal Aero Preserve Academy	19	29	34	-2	-58	-55	2	-15	-29	45	-3		29	5
28	Frost (Earl) Elementary	18	32	82	-27	-52	-67	-12		-28	47	-20		38	47
29	Bitterwater-Tully Elementary	13												12	
30	Colony Oak Elementary	13	8	52	-28	-67	-72	-41	-39			-23		30	
31	George Kelly Elementary	11	9	16	-7	-70	-34	3		-43	23	-11	6	25	20
32	Bolinas-Stinson Elementary	10			-17			-32						25	
33	Anthony C. Traina Elementary	10	15	15	-5	-76	-42	15		-12	37	-10	23	17	38
34	Imperial Valley Home School Academy	4			4							-25		34	
35	Gladys Poet-Christian Elementary	0	-4	-28	-15	-63	-67	-19		-68	-1	-8		15	
36	Bay View Academy	-1	-26	27	-23	-87	-78	-28		-23	40	-21		5	31
37	Tom Hawkins Elementary	-2	13	6	-25	-78	-67	-28		4	20	-20		8	31
38	Baypoint Preparatory Academy - San Diego	-3			-26							-13		17	
39	Knights Ferry Elementary	-4	-32	13	-17							7		-12	
40	Dixon Montessori Charter	-9	-13	-27	-39	-74		-41				-23		4	-4
41	Urban Montessori Charter	-11	-12		-68	-74	-55	-39		-91	24	-49		48	33
42	Great Valley Academy - Salida	-15	-15	0	-35	-66	-72	-38		-55	32	-36		2	-24

Mathematics: Urban Montessori Charter



Mathematics: School Data

Attribute	All	Grade 5	Grade 8	Soc Dis	SWD	EL Only	Eng Lrn	Home less	Afr Am	Asian	Hisp/ Lat	Pas Isl	Wh.	2+ Races
Number of Students	196	36	8	63	28	38	49		41	14	51		62	26
Color 2019	O			O			O		R		O		G	
Points to Next Color	3			4			3		3		3		15	
Points to Next Status Level	22			4	22	61	45		40	18	55		33	32
Change 2018 to 2019	-8			4	5	3	1		-20	22	-23		-2	-6
Status 2018	-39			-105	-137	-96	-74		-117	-6	-60		4	9
Status 2019	-47	-73		-99	-117	-86	-70		-135	17	-80		2	3
Comparison School Median Status 2019	2			-28	-82	-67	-28	-48	-51	46	-23	-3	12	17
Comparison School 25th%	-18			-49	-101	-80	-49	-60	-82	17	-46	-35	-8	-2
Comparison School 75th%	23			-18	-67	-42	-1	-28	-29	66	-2	5	36	34
DASS Only: Statewide Median Status 2019	-194			-199	-175	-222	-218	-194	-189	-63	-200	N/A	-134	-124
Statewide Median Status 2019	-36			-50	-109	-93	-56	-70	-76	49	-49	-66	-4	13

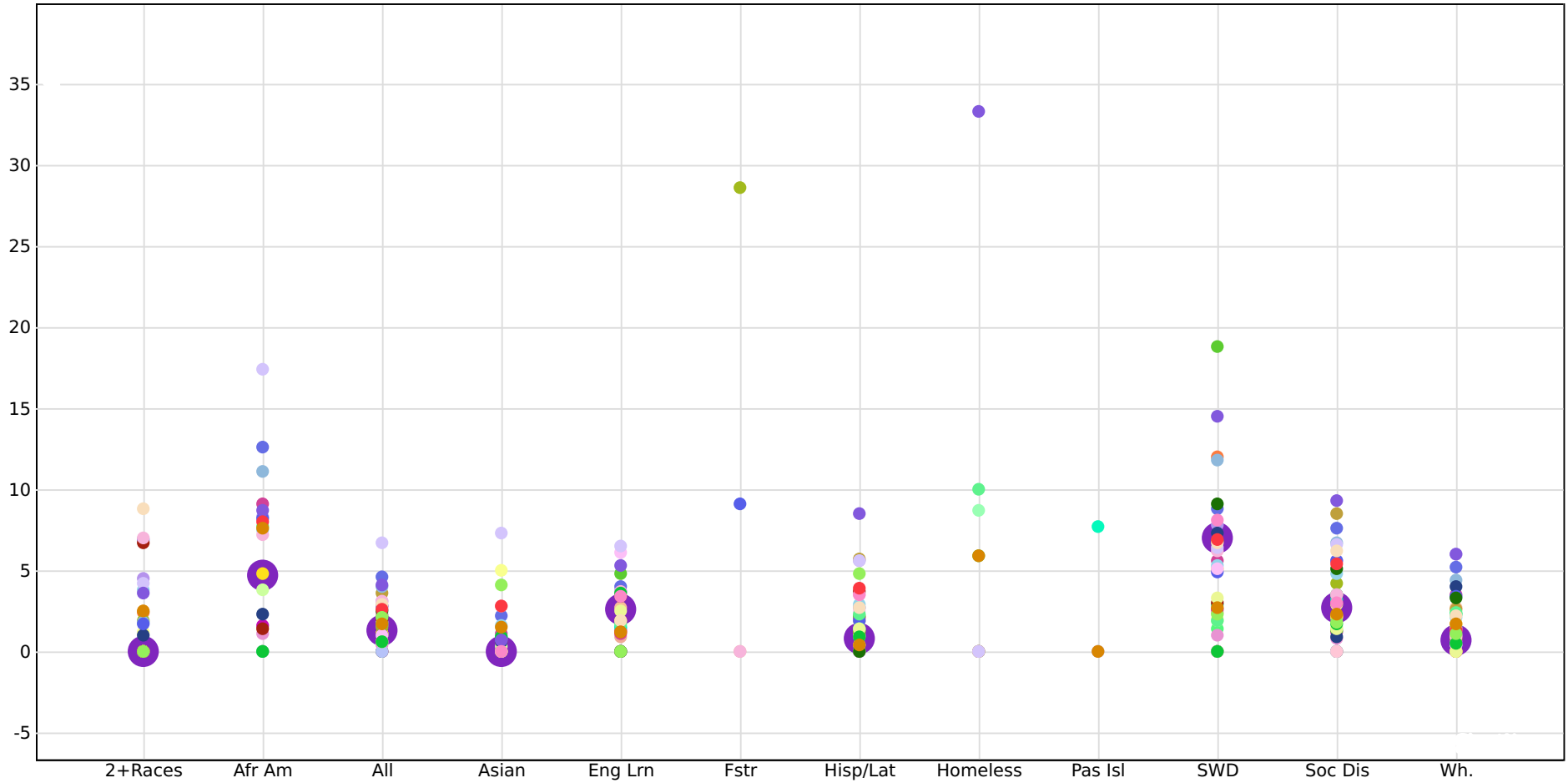
Mathematics: Status 2019 of Comparison Schools

N	School	All	Grade 5	Grade 8	Soc Dis	SWD	EL Only	Eng Lrn	Home less	Afr Am	Asian	Hisp/ Lat	Pas Isl	Wh.	2+ Races
1	Park View Elementary	54	20	118	22	-42	-25	15			111	32		53	
2	Brightwood Elementary	38	0	118	-9	-70	-28	9			85	-19		23	58
3	Discovery Charter	37	0	82	15	-62	-37	4		23	125	27		51	55
4	Yu (Alice Fong) Elementary	37	33	46	17	-78	5	33		-96	58	6		27	24
5	Brookside	34	27	4	-22	-106	-42	12		-8	98	-19		52	12
6	Franklin Elementary	34	24	34	-6	20	0	12			50	23		37	32
7	Cadence Park	32	8		-19		-4	16			57	-43		24	33
8	Los Olivos Elementary	27	-10	53	-17	-56						10		36	
9	Gold River Discovery Center K-8	26	-9	28	-2	-32	-70	-27		11	46	-2		29	48
10	Creative Arts Charter	26	20	-17	-36	-82	4	-1		-110	66	7		47	16
11	Goethe International Charter	23	25		-21	-81		33		-33		7		47	24
12	Citizens of the World Charter School Mar Vista	19	9		-28	-67	-73	-29		-29	53	-19		46	75

(continued)

N	School	All	Grade 5	Grade 8	Soc Dis	SWD	EL Only	Eng Lrn	Home less	Afr Am	Asian	Hisp/ Lat	Pas Isl	Wh.	2+ Races
13	Baypoint Preparatory Academy - San Diego	17			0							15		19	
14	North Shoreview Montessori	15	14	31	-62	-93	-140	-99			77	-70		33	47
15	Northlake Hills Elementary	14	21		-18	-28	-54	-35				-12		39	83
16	McCabe Elementary	13	-13	2	-3	-59	-54	-14			102	6		47	
17	River Islands Technology Academy II	9	-17	7	-16	-78	-52	-8		14	50	-13		6	-16
18	San Pasqual Union Elementary	8	16	-26	-22	-67	-50	-28	-16			-16		18	34
19	Willow Creek Academy	7	-1	25	-35	-76	-68	-7		-90	32	-27		41	39
20	Bridgeway Island Elementary	6	-4	19	-27	-101	-72	-21	-48	-29	36	-22	-3	12	1
21	Cal Aero Preserve Academy	4	4	1	-18	-71	-24	6	-28	-51	46	-25		9	-2
22	Westlake Charter	2	-16	-8	-26	-67	-80	-16		-46	26	-23		19	-3
23	Dr. Bernice Jameson Todd Academy	0	10	-49	-28	-82	-70	-37		-51	42	-11		10	26
24	Southside Elementary	-4	-21	-32	-49	-133	-64	-49				-18		14	
25	Knights Ferry Elementary	-5	-36	-35	-26							1		-9	
26	Don Callejon	-6	57	-71	-88	-121	-100	-42		-110	77	-89		-5	11
27	George Kelly Elementary	-8	-38	10	-29	-88	-54	-16		-51	9	-28	5	-1	-2
28	Colony Oak Elementary	-9	-31	29	-58	-96	-93	-70	-66			-53		12	
29	Frost (Earl) Elementary	-10	-23	24	-60	-82	-82	-39		-62	38	-57		11	24
30	Bay View Academy	-13	-36	-13	-30	-107	-49	-28		-45	17	-30		-8	17
31	McSwain Elementary	-17	-28	-37	-43	-54	-67	-59	-60		-1	-32		-5	-12
32	Gladys Poet-Christian Elementary	-18	-38	-44	-37	-90	-81	-40		-82	-14	-34		3	
33	Antioch Charter Academy	-25	-15	-4	-51	-102		-50		-44	26	-39		-27	
34	Tom Hawkins Elementary	-25	-37	-26	-56	-114	-79	-47		-55	9	-45		-10	-11
35	Anthony C. Traina Elementary	-27	-22	-56	-39	-93	-67	-22		-72	5	-48	-35	-12	3
36	Bolinas-Stinson Elementary	-31			-59			-63						-19	
37	Dixon Montessori Charter	-33	-47	-70	-53	-104		-64				-46		-18	-39
38	Bitterwater-Tully Elementary	-34												-33	
39	Whitmore Charter School of Art & Technology	-37	-22	-68	-46	-55	-106	-51			53	-53		-28	
40	Great Valley Academy - Salida	-37	-61	-48	-55	-83	-97	-63		-71	-8	-56		-23	-45
41	Imperial Valley Home School Academy	-40			-49							-59		-29	
42	Urban Montessori Charter	-47	-73		-99	-117	-86	-70		-135	17	-80		2	3

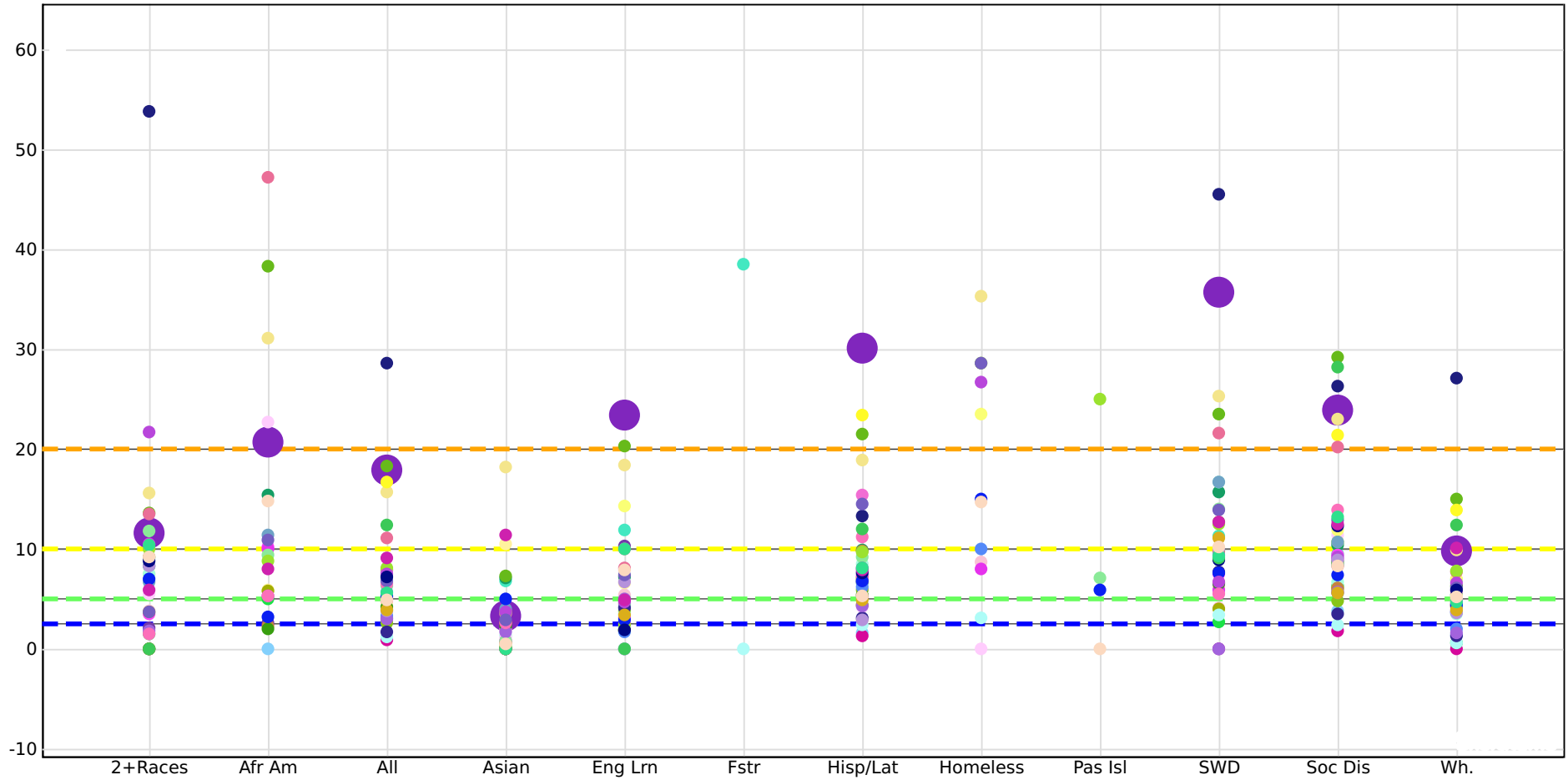
Suspension: Urban Montessori Charter



Suspension: School Data

Attribute	All	Soc Dis	SWD	Eng Lrn	Fstr	Home less	Afr Am	Asian	Hisp/ Lat	Pas Isl	Wh.	2+ Races
Number of Students	454	150	43	78			86	30	123		137	69
Color 2019	Y	O	R	O			O		G		G	B
Points to Next Status Level	0	-2	-1	-2			-2		0		0	
Change 2018 to 2019	0	1	1	3			4	-4	-1		0	0
Status 2018	1	2	6	0			1	4	2		1	0
Status 2019	1	3	7	3			5	0	1		1	0
Comparison School Median Status 2019	2	2	3	1	N/A	N/A	5	N/A	1	N/A	1	N/A
Comparison School 25th%	1	1	1	N/A	N/A	N/A	1	N/A	N/A	N/A	N/A	N/A
Comparison School 75th%	3	5	7	3	9	6	8	1	3	N/A	2	2
Statewide Median Status 2019	2	2	3	1	8	3	4	N/A	1	N/A	1	N/A
DASS Only: Statewide Median Status 2019	7	7	6	4	7	7	5	N/A	5	N/A	5	N/A

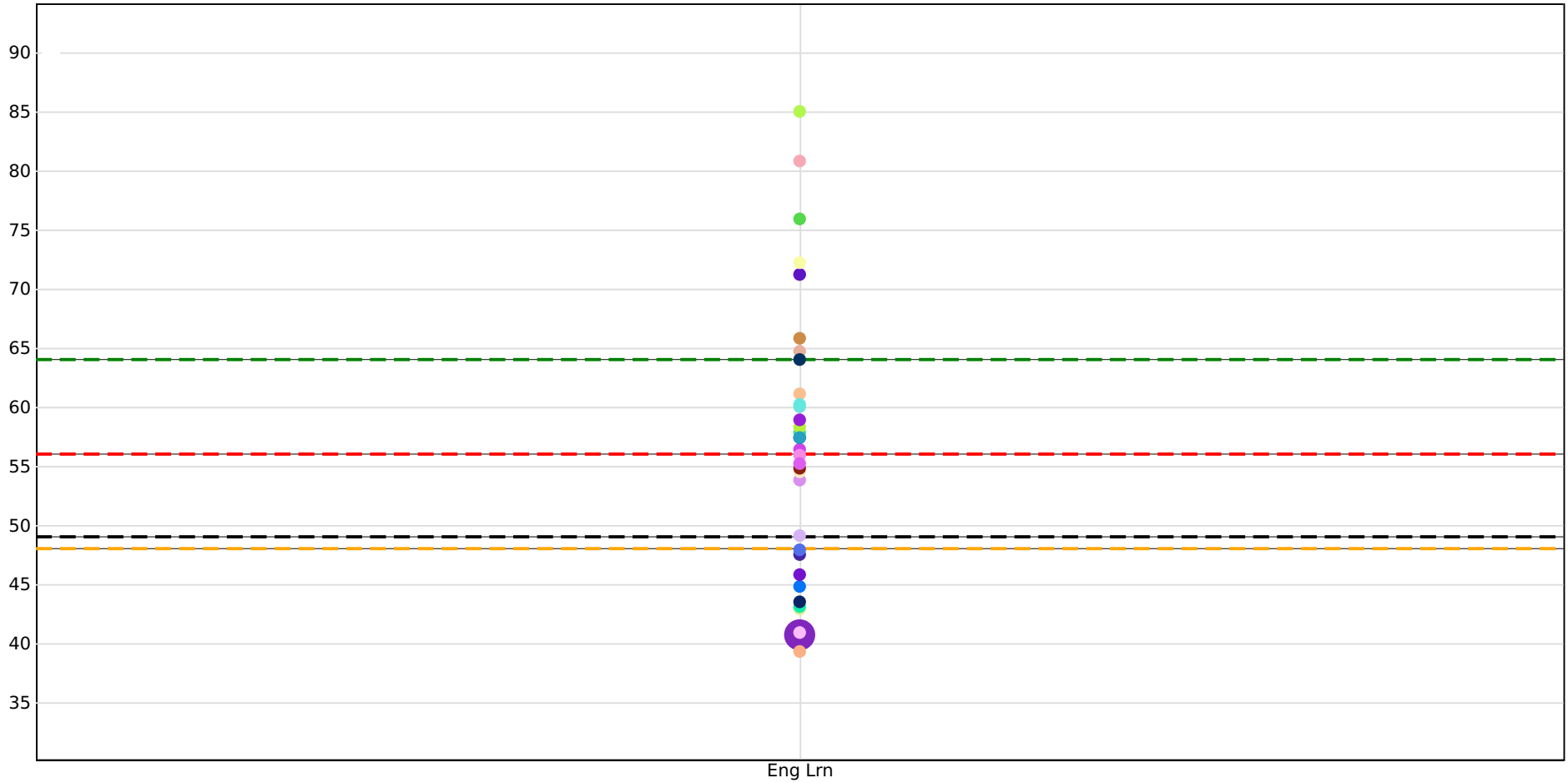
Chronic Absenteeism: Urban Montessori Charter



Chronic Absenteeism: School Data

Attribute	All	Soc Dis	SWD	Eng Lrn	Fstr	Home less	Afr Am	Asian	Hisp/Lat	Pas Isl	Wh.	2+ Races
Number of Students	435	142	42	77			82	30	113		132	69
Color 2019	O	R	R	R			O		R		O	Y
Points to Next Color	-1	-1	-1	-1			-1		-1		0	-2
Points to Next Status Level	-8	-4	-16	-3			-1	-1	-10		-5	-2
Change 2018 to 2019	3	1	9	3			-1	-5	7		4	-2
Status 2019	18	24	36	23			21	3	30		10	12
Comparison School Median Status 2019	5	9	9	5	N/A	15	9	2	7	6	5	7
Comparison School 25th%	4	6	6	2	N/A	8	5	1	5	N/A	4	2
Comparison School 75th%	8	13	13	8	39	27	15	4	10	7	7	10
Statewide Median Status 2019	10	12	15	9	18	21	17	3	10	18	9	9
DASS Only: Statewide Median Status 2019	43	45	42	42	41	50	42	28	44	N/A	32	26

English Learner Progress: Urban Montessori Charter



English Learner Progress: School Data

Attribute	Eng Lrn
Comparison School 25th%	48
Comparison School 75th%	64
Comparison School Median Status 2019	56
DASS Only: Statewide Median Status 2019	40
Number of Students	54
Statewide Median Status 2019	49
Status 2019	41

Grade Level Data: Distance from Standard

YEARLY PROGRESS - School Compared to State, Change by Grade Level from 2018 to 2019: Distance from Standard

English Language Arts	3-4	4-5	5-6	6-7
School 2018 to 2019	+4	+5	-12	+15
Statewide 2018 to 2019	+1	+10	+0	+8
School compared to state	+3	-5	-12	+7

Mathematics	3-4	4-5	5-6	6-7
School 2018 to 2019	-7	-15	-4	+15
Statewide 2018 to 2019	-8	-15	-1	+1
School compared to state	+1	+0	-3	+14

School Grade Level Cohort Data: Distance from Standard

English Lang Arts	3	4	5	6	7
2019	-42	-6	-12	0	34
2018	-10	-17	12	19	33
2017	-8	11	23	-21	NA
2016	6	11	-25	NA	NA
2015	-19	-57	NA	NA	NA

Mathematics	3	4	5	6	7
2019	-59	-38	-73	-34	-27
2018	-31	-58	-30	-42	-52
2017	-46	-30	-65	-64	NA
2016	-23	-35	-89	NA	NA
2015	-44	-86	NA	NA	NA

Comparison Grade Level Cohort Data: Distance from Standard

English Language Arts	3	4	5	6	7
Statewide-2019	-7	-7	0	-6	-5
Statewide-2018	-8	-9	-6	-12	-8
Selected schools-2019	14	17	25	20	29

Mathematics	3	4	5	6	7
Statewide-2019	-2	-13	-33	-38	-40
Statewide-2018	-5	-17	-38	-41	-43
Selected schools-2019	17	6	-11	-8	-2

School Change by Grade Level Cohort, Starting Grade to Highest Grade: Distance from Standard

English Language Arts	Change
2015 Gr. 3 to 2019 Gr. 7	+53
2015 Gr. 4 to 2018 Gr. 7	+90
2015 Gr. 5 to 2017 Gr. 7	NA
2015 Gr. 6 to 2016 Gr. 7	NA
Average change to highest grade level	+72

Mathematics	Change
2015 Gr. 3 to 2019 Gr. 7	+17
2015 Gr. 4 to 2018 Gr. 7	+34
2015 Gr. 5 to 2017 Gr. 7	NA
2015 Gr. 6 to 2016 Gr. 7	NA
Average change to highest grade level	+26

School Change from Prior Year by Grade Level Cohort: Distance from Standard

English Language Arts	3-4	4-5	5-6	6-7
2018 to 2019	+4	+5	-12	+15
2017 to 2018	-9	+1	-4	+54
2016 to 2017	+5	+12	+4	NA
2015 to 2016	+30	+32	NA	NA

Mathematics	3-4	4-5	5-6	6-7
2018 to 2019	-7	-15	-4	+15
2017 to 2018	-12	+0	+23	+12
2016 to 2017	-7	-30	+25	NA
2015 to 2016	+9	-3	NA	NA

Grade Level Data: Percent Proficient

YEARLY PROGRESS - School Compared to State, Change by Grade Level from 2018 to 2019: Percent Proficient

English Language Arts	3-4	4-5	5-6	6-7
School 2018 to 2019	+2%	+8%	-7%	+9%
Statewide 2018 to 2019	+1%	+3%	+1%	+4%
School compared to state	+1%	+5%	-8%	+5%

Mathematics	3-4	4-5	5-6	6-7
School 2018 to 2019	+9%	+3%	+1%	+3%
Statewide 2018 to 2019	-4%	-5%	+2%	+0%
School compared to state	+13%	+8%	-1%	+2%

School Grade Level Cohort Data: Percent Proficient

English Lang Arts	All	3	4	5	6	7
2019	46%	32%	50%	50%	47%	63%
2018	50%	48%	42%	55%	54%	64%
2017	53%	46%	55%	58%	56%	NA
2016	53%	56%	53%	46%	NA	NA
2015	44%	47%	37%	NA	NA	NA

Mathematics	All	3	4	5	6	7
2019	36%	26%	47%	22%	42%	53%
2018	36%	37%	19%	41%	50%	43%
2017	33%	25%	43%	31%	33%	NA
2016	35%	45%	31%	17%	NA	NA
2015	28%	32%	19%	NA	NA	NA

Comparison Grade Level Cohort Data: Percent Proficient

English Language Arts	3	4	5	6	7
Statewide-2019	48%	50%	52%	50%	51%
Statewide-2018	48%	49%	49%	48%	50%
Selected schools-2019	59%	60%	63%	61%	66%

Mathematics	3	4	5	6	7
Statewide-2019	50%	45%	38%	38%	38%
Statewide-2018	49%	43%	36%	38%	37%
Selected schools-2019	60%	53%	47%	49%	51%

School Change by Grade Level Cohort, Starting Grade to Highest Grade: Percent Proficient

English Language Arts	Change
2015 Gr. 3 to 2019 Gr. 7	+16%
2015 Gr. 4 to 2018 Gr. 7	+27%
2015 Gr. 5 to 2017 Gr. 7	NA
2015 Gr. 6 to 2016 Gr. 7	NA
Average change to highest grade level	+22%

Mathematics	Change
2015 Gr. 3 to 2019 Gr. 7	+21%
2015 Gr. 4 to 2018 Gr. 7	+24%
2015 Gr. 5 to 2017 Gr. 7	NA
2015 Gr. 6 to 2016 Gr. 7	NA
Average change to highest grade level	+22%

School Change from Prior Year by Grade Level Cohort: Percent Proficient

English Language Arts	3-4	4-5	5-6	6-7
2018 to 2019	+2%	+8%	-7%	+9%
2017 to 2018	-4%	-1%	-4%	+9%
2016 to 2017	-1%	+5%	+10%	NA
2015 to 2016	+6%	+9%	NA	NA

Mathematics	3-4	4-5	5-6	6-7
2018 to 2019	+9%	+3%	+1%	+3%
2017 to 2018	-6%	-2%	+19%	+10%
2016 to 2017	-2%	+0%	+16%	NA
2015 to 2016	-1%	-2%	NA	NA

Students with Disabilities Grade Level Data: Distance from Standard

School Grade Level Cohort Data: Distance from Standard

English Lang Arts	3
2017	-65

Mathematics	3
2017	-118

Comparison Grade Level Cohort Data: Distance from Standard

English Language Arts	3
Statewide-2019	-73
Statewide-2018	-77
Selected schools-2019	-39

Mathematics	3
Statewide-2019	-65
Statewide-2018	-71
Selected schools-2019	-21

Students with Disabilities Grade Level Data: Percent Proficient

YEARLY PROGRESS - School Compared to State, Change by Grade Level from 2018 to 2019: Percent Proficient

English Lang Arts	All	3
2017	21%	18%

Mathematics	All	3
2017	9%	0%

Comparison Grade Level Cohort Data: Percent Proficient

English Language Arts	3
Statewide-2019	21%
Statewide-2018	20%
Selected schools-2019	33%

Mathematics	3
Statewide-2019	24%
Statewide-2018	23%
Selected schools-2019	40%

African American Grade Level Data: Distance from Standard

YEARLY PROGRESS - School Compared to State, Change by Grade Level from 2018 to 2019: Distance from Standard

English Language Arts	3-4
School 2018 to 2019	-17
Statewide 2018 to 2019	-5
School compared to state	-12

Mathematics	3-4
School 2018 to 2019	-24
Statewide 2018 to 2019	-11
School compared to state	-13

School Grade Level Cohort Data: Distance from Standard

English Lang Arts	3	4
2019	-124	-84
2018	-67	-73
2017	-56	NA
2016	-93	-65
2015	-89	NA

Mathematics	3	4
2019	-146	-117
2018	-93	-103
2017	-85	NA
2016	-99	-88
2015	-98	NA

Comparison Grade Level Cohort Data: Distance from Standard

English Language Arts	3	4
Statewide-2019	-46	-50
Statewide-2018	-45	-52
Selected schools-2019	-21	-29

Mathematics	3	4
Statewide-2019	-43	-58
Statewide-2018	-46	-61
Selected schools-2019	-22	-24

School Change by Grade Level Cohort, Starting Grade to Highest Grade: Distance from Standard

English Language Arts	Change
2018 Gr. 3 to 2019 Gr. 4	-17
2017 Gr. 3 to 2018 Gr. 4	-17
2016 Gr. 3 to 2017 Gr. 4	NA
2015 Gr. 3 to 2016 Gr. 4	+24
Average change to highest grade level	-3

Mathematics	Change
2018 Gr. 3 to 2019 Gr. 4	-24
2017 Gr. 3 to 2018 Gr. 4	-18
2016 Gr. 3 to 2017 Gr. 4	NA
2015 Gr. 3 to 2016 Gr. 4	+10
Average change to highest grade level	-11

School Change from Prior Year by Grade Level Cohort: Distance from Standard

English Language Arts	3-4
2018 to 2019	-17
2017 to 2018	-17
2016 to 2017	NA
2015 to 2016	+24

Mathematics	3-4
2018 to 2019	-24
2017 to 2018	-18
2016 to 2017	NA
2015 to 2016	+10

African American Grade Level Data: Percent Proficient

YEARLY PROGRESS - School Compared to State, Change by Grade Level from 2018 to 2019: Percent Proficient

English Language Arts	3-4
School 2018 to 2019	+3%
Statewide 2018 to 2019	+0%
School compared to state	+3%

Mathematics	3-4
School 2018 to 2019	+8%
Statewide 2018 to 2019	-4%
School compared to state	+13%

YEARLY PROGRESS - School Compared to State, Change by Grade Level from 2018 to 2019: Percent Proficient

English Lang Arts	All	3	4
2019	18%	0%	25%
2018	24%	22%	27%
2017	17%	33%	NA
2016	17%	8%	18%
2015	20%	14%	NA

Mathematics	All	3	4
2019	8%	0%	25%
2018	11%	17%	9%
2017	0%	0%	NA
2016	6%	0%	18%
2015	10%	14%	NA

Comparison Grade Level Cohort Data: Percent Proficient

English Language Arts	3	4
Statewide-2019	31%	32%
Statewide-2018	32%	31%
Selected schools-2019	40%	34%

Mathematics	3	4
Statewide-2019	30%	25%
Statewide-2018	30%	24%
Selected schools-2019	40%	40%

School Change by Grade Level Cohort, Starting Grade to Highest Grade: Percent Proficient

English Language Arts	Change
2018 Gr. 3 to 2019 Gr. 4	+3%
2017 Gr. 3 to 2018 Gr. 4	-6%
2016 Gr. 3 to 2017 Gr. 4	NA
2015 Gr. 3 to 2016 Gr. 4	+4%
Average change to highest grade level	+0%

Mathematics	Change
2018 Gr. 3 to 2019 Gr. 4	+8%
2017 Gr. 3 to 2018 Gr. 4	+9%
2016 Gr. 3 to 2017 Gr. 4	NA
2015 Gr. 3 to 2016 Gr. 4	+4%
Average change to highest grade level	+7%

School Change from Prior Year by Grade Level Cohort: Percent Proficient

English Language Arts	3-4
2018 to 2019	+3%
2017 to 2018	-6%
2016 to 2017	NA
2015 to 2016	+4%

Mathematics	3-4
2018 to 2019	+8%
2017 to 2018	+9%
2016 to 2017	NA
2015 to 2016	+4%

Hispanic or Latinx Grade Level Data: Distance from Standard

YEARLY PROGRESS - School Compared to State, Change by Grade Level from 2018 to 2019: Distance from Standard

English Language Arts	3-4
School 2018 to 2019	+14
Statewide 2018 to 2019	+0
School compared to state	+14

Mathematics	3-4
School 2018 to 2019	-8
Statewide 2018 to 2019	-10
School compared to state	+2

School Grade Level Cohort Data: Distance from Standard

English Lang Arts	3	4
2019	-90	-22
2018	-36	NA
2017	-45	-51
2016	-24	NA

Mathematics	3	4
2019	-104	-44
2018	-36	NA
2017	-91	-106
2016	-54	NA

Comparison Grade Level Cohort Data: Distance from Standard

English Language Arts	3	4
Statewide-2019	-28	-30
Statewide-2018	-30	-33
Selected schools-2019	-10	-8

Mathematics	3	4
Statewide-2019	-22	-35
Statewide-2018	-26	-40
Selected schools-2019	-6	-18

School Change by Grade Level Cohort, Starting Grade to Highest Grade: Distance from Standard

English Language Arts	Change
2018 Gr. 3 to 2019 Gr. 4	+14
2017 Gr. 3 to 2018 Gr. 4	NA
2016 Gr. 3 to 2017 Gr. 4	-27
Average change to highest grade level	-6

Mathematics	Change
2018 Gr. 3 to 2019 Gr. 4	-8
2017 Gr. 3 to 2018 Gr. 4	NA
2016 Gr. 3 to 2017 Gr. 4	-52
Average change to highest grade level	-30

School Change from Prior Year by Grade Level Cohort: Distance from Standard

English Language Arts	3-4
2018 to 2019	+14
2017 to 2018	NA
2016 to 2017	-27

Mathematics	3-4
2018 to 2019	-8
2017 to 2018	NA
2016 to 2017	-52

Hispanic or Latinx Grade Level Data: Percent Proficient

YEARLY PROGRESS - School Compared to State, Change by Grade Level from 2018 to 2019: Percent Proficient

English Language Arts	3-4
School 2018 to 2019	+0%
Statewide 2018 to 2019	+2%
School compared to state	-2%

Mathematics	3-4
School 2018 to 2019	+14%
Statewide 2018 to 2019	-5%
School compared to state	+18%

YEARLY PROGRESS - School Compared to State, Change by Grade Level from 2018 to 2019: Percent Proficient

English Lang Arts	All	3	4
2019	24%	14%	36%
2018	35%	37%	NA
2017	28%	25%	31%
2016	33%	40%	NA

Mathematics	All	3	4
2019	18%	5%	46%
2018	22%	32%	NA
2017	10%	6%	15%
2016	18%	26%	NA

Comparison Grade Level Cohort Data: Percent Proficient

English Language Arts	3	4
Statewide-2019	38%	39%
Statewide-2018	38%	38%
Selected schools-2019	46%	48%

Mathematics	3	4
Statewide-2019	40%	34%
Statewide-2018	38%	31%
Selected schools-2019	48%	39%

School Change by Grade Level Cohort, Starting Grade to Highest Grade: Percent Proficient

English Language Arts	Change
2018 Gr. 3 to 2019 Gr. 4	+0%
2017 Gr. 3 to 2018 Gr. 4	NA
2016 Gr. 3 to 2017 Gr. 4	-9%
Average change to highest grade level	-5%

Mathematics	Change
2018 Gr. 3 to 2019 Gr. 4	+14%
2017 Gr. 3 to 2018 Gr. 4	NA
2016 Gr. 3 to 2017 Gr. 4	-11%
Average change to highest grade level	+2%

School Change from Prior Year by Grade Level Cohort: Percent Proficient

English Language Arts	3-4
2018 to 2019	+0%
2017 to 2018	NA
2016 to 2017	-9%

Mathematics	3-4
2018 to 2019	+14%
2017 to 2018	NA
2016 to 2017	-11%

Socioeconomically Disadvantaged Grade Level Data: Distance from Standard

YEARLY PROGRESS - School Compared to State, Change by Grade Level from 2018 to 2019: Distance from Standard

English Language Arts	3-4	4-5
School 2018 to 2019	-19	NA
Statewide 2018 to 2019	-1	+9
School compared to state	-18	NA

Mathematics	3-4	4-5
School 2018 to 2019	-36	NA
Statewide 2018 to 2019	-9	-18
School compared to state	-27	NA

School Grade Level Cohort Data: Distance from Standard

English Lang Arts	3	4	5
2019	-104	-88	NA
2018	-69	NA	NA
2017	-57	-72	NA
2016	-59	NA	-100
2015	-75	-116	NA

Mathematics	3	4	5
2019	-104	-126	NA
2018	-90	NA	NA
2017	-92	-94	NA
2016	-61	NA	-159
2015	-100	-143	NA

Comparison Grade Level Cohort Data: Distance from Standard

English Language Arts	3	4	5
Statewide-2019	-32	-34	-28
Statewide-2018	-34	-37	-35
Selected schools-2019	-20	-15	-10

Mathematics	3	4	5
Statewide-2019	-25	-38	-61
Statewide-2018	-29	-43	-66
Selected schools-2019	-12	-22	-44

School Change by Grade Level Cohort, Starting Grade to Highest Grade: Distance from Standard

English Language Arts	Change
2017 Gr. 3 to 2019 Gr. 5	NA
2016 Gr. 3 to 2018 Gr. 5	NA
2015 Gr. 3 to 2017 Gr. 5	NA
2015 Gr. 4 to 2016 Gr. 5	+16
Average change to highest grade level	+16

Mathematics	Change
2017 Gr. 3 to 2019 Gr. 5	NA
2016 Gr. 3 to 2018 Gr. 5	NA
2015 Gr. 3 to 2017 Gr. 5	NA
2015 Gr. 4 to 2016 Gr. 5	-16
Average change to highest grade level	-16

School Change from Prior Year by Grade Level Cohort: Distance from Standard

English Language Arts	3-4	4-5
2018 to 2019	-19	NA
2017 to 2018	NA	NA
2016 to 2017	-13	NA
2015 to 2016	NA	+16

Mathematics	3-4	4-5
2018 to 2019	-36	NA
2017 to 2018	NA	NA
2016 to 2017	-33	NA
2015 to 2016	NA	-16

Socioeconomically Disadvantaged Grade Level Data: Percent Proficient

YEARLY PROGRESS - School Compared to State, Change by Grade Level from 2018 to 2019: Percent Proficient

English Language Arts	3-4	4-5
School 2018 to 2019	-20%	NA
Statewide 2018 to 2019	+1%	+3%
School compared to state	-21%	NA

Mathematics	3-4	4-5
School 2018 to 2019	-4%	NA
Statewide 2018 to 2019	-4%	-5%
School compared to state	+1%	NA

YEARLY PROGRESS - School Compared to State, Change by Grade Level from 2018 to 2019: Percent Proficient

English Lang Arts	All	3	4	5
2019	14%	12%	12%	NA
2018	28%	32%	NA	NA
2017	21%	27%	18%	NA
2016	18%	20%	NA	16%
2015	21%	30%	13%	NA

Mathematics	All	3	4	5
2019	10%	12%	12%	NA
2018	12%	16%	NA	NA
2017	6%	13%	6%	NA
2016	13%	20%	NA	0%
2015	3%	6%	0%	NA

Comparison Grade Level Cohort Data: Percent Proficient

English Language Arts	3	4	5
Statewide-2019	37%	38%	40%
Statewide-2018	36%	36%	37%
Selected schools-2019	41%	45%	47%

Mathematics	3	4	5
Statewide-2019	38%	32%	26%
Statewide-2018	37%	30%	23%
Selected schools-2019	44%	38%	29%

School Change by Grade Level Cohort, Starting Grade to Highest Grade: Percent Proficient

English Language Arts	Change
2017 Gr. 3 to 2019 Gr. 5	NA
2016 Gr. 3 to 2018 Gr. 5	NA
2015 Gr. 3 to 2017 Gr. 5	NA
2015 Gr. 4 to 2016 Gr. 5	+3%
Average change to highest grade level	+3%

Mathematics	Change
2017 Gr. 3 to 2019 Gr. 5	NA
2016 Gr. 3 to 2018 Gr. 5	NA
2015 Gr. 3 to 2017 Gr. 5	NA
2015 Gr. 4 to 2016 Gr. 5	+0%
Average change to highest grade level	+0%

School Change from Prior Year by Grade Level Cohort: Percent Proficient

English Language Arts	3-4	4-5
2018 to 2019	-20%	NA
2017 to 2018	NA	NA
2016 to 2017	-2%	NA
2015 to 2016	NA	+3%

Mathematics	3-4	4-5
2018 to 2019	-4%	NA
2017 to 2018	NA	NA
2016 to 2017	-14%	NA
2015 to 2016	NA	+0%

English Learner Grade Level Data: Distance from Standard

School Grade Level Cohort Data: Distance from Standard

English Lang Arts	3
2019	-80
2017	-74

Mathematics	3
2019	-96
2017	-97

Comparison Grade Level Cohort Data: Distance from Standard

English Language Arts	3
Statewide-2019	-69
Statewide-2018	-64
Selected schools-2019	-33

Mathematics	3
Statewide-2019	-51
Statewide-2018	-49
Selected schools-2019	-14

English Learner Grade Level Data: Percent Proficient

YEARLY PROGRESS - School Compared to State, Change by Grade Level from 2018 to 2019: Percent Proficient

English Lang Arts	All	3
2019	29%	15%
2017	20%	8%

Mathematics	All	3
2019	17%	0%
2017	12%	8%

Comparison Grade Level Cohort Data: Percent Proficient

English Language Arts	3
Statewide-2019	18%
Statewide-2018	21%
Selected schools-2019	34%

Mathematics	3
Statewide-2019	25%
Statewide-2018	26%
Selected schools-2019	42%

Selected parameters for comparison schools

Parameter	From	To
English Learner	7%	27%
Socioeconomically Disadvantaged	20%	40%
Students with Disabilities	5%	13%
African American	0%	100%
Asian	0%	100%
Filipino	0%	58.7%
Hispanic/Latinx	0%	100%
White	0%	100%
Pacific Islander	0%	50%
Grade Range	P-4	7-8
County	Any	
District	Any	
Charter	Any	
DASS	Any	
Zip	Any	
Number of comparison schools	42	

Comparison Schools

School	County	Low Gr.	High Total Gr.	FR PM %	Eng. Lrn. %	St.w. Dis. %	Am. Ind. %	Asian %	Pas. Isl. %	Fil. %	Hisp./Lat. %	Afr. Am. %	Wh. %	2+ Races %	Fstr %	Home less %	Char ter	DA SS	
Urban Montessori Charter	Alameda	K	8	430	30	17	9	0	7	0	1	26	19	31	15	0	1	Yes	No
McCabe Elementary	Imperial	K	8	1365	30	15	9	0	3	0	0	85	0	10	1	0	0	No	No
Cal Aero Preserve Academy	San Bernardino	K	8	1358	29	10	10	0	24	1	9	34	9	21	3	0	3	No	No
Dr. Bernice Jameson Todd Academy	Riverside	K	8	1152	28	7	13	0	7	0	5	38	9	37	5	0	0	No	No
Bridgeway Island Elementary	Yolo	K	8	1064	38	14	10	0	18	2	4	23	5	42	7	0	3	No	No

(continued)

School	County	Low Gr.	High Total Gr.	FR PM %	Eng. Lrn. %	St.w. Dis. %	Am. Ind. %	Asian %	Pas. Isl. %	Fil. %	Hisp./Lat. %	Afr. Am. %	Wh. %	2+ Races %	Fstr %	Home less %	Char ter	DA SS
George Kelly Elementary	San Joaquin	K	8 1012	40	19	9	0	23	2	8	29	6	25	8	0	1	No	No
Westlake Charter Brightwood Elementary	Sacramento	K	8 946	37	12	10	0	25	0	6	28	9	21	11	0	0	Yes	No
Discovery Charter	Los Angeles	K	8 928	38	16	7	0	50	0	3	40	1	2	5	0	1	No	No
Don Callejon	San Diego	K	8 927	33	21	8	0	2	1	11	64	4	13	5	0	0	Yes	No
	Santa Clara	K	8 907	33	26	12	0	44	0	5	28	5	12	6	0	2	No	No
Great Valley Academy - Salida	Stanislaus	K	8 890	32	9	8	0	4	0	1	43	3	43	5	0	0	Yes	No
McSwain Elementary	Merced	K	8 871	40	11	11	0	6	0	0	44	1	46	3	0	2	No	No
Gold River Discovery Center K-8	Sacramento	K	8 806	25	11	11	0	11	1	1	18	2	58	9	0	1	No	No
River Islands Technology Academy II	San Joaquin	K	8 782	27	13	7	0	16	1	13	38	6	21	6	1	0	Yes	No
Anthony C. Traina Elementary	San Joaquin	K	8 761	39	16	12	0	16	2	7	38	7	24	6	0	1	No	No
Brookside	San Joaquin	K	8 750	29	13	9	0	23	1	4	31	9	28	4	0	0	No	No
Tom Hawkins Elementary	San Joaquin	K	8 730	30	17	9	0	15	2	2	38	5	35	4	0	0	No	No
Citizens of the World Charter School	Los Angeles	K	8 653	31	11	11	0	7	0	1	31	9	41	6	0	1	Yes	No
Mar Vista Frost (Earl) Elementary	Santa Clara	K	8 637	24	12	8	0	17	0	2	35	3	32	10	0	1	No	No
Yu (Alice Fong) Elementary	San Francisco	K	8 585	34	18	7	0	61	0	3	7	8	4	10	0	0	No	No
San Pasqual Union Elementary	San Diego	K	8 580	24	10	10	0	1	0	1	27	2	60	7	2	5	No	No

(continued)

School	County	Low Gr.	High Total Gr.	FR PM %	Eng. Lrn. %	St.w. Dis. %	Am. Ind. %	Asian %	Pas. Isl. %	Fil. %	Hisp./Lat. %	Afr. Am. %	Wh. %	2+ Races %	Fstr %	Home less %	Char ter	DA SS	
Northlake Hills Elementary	Los Angeles	K	7	542	39	20	13	0	2	0	2	49	2	40	4	1	0	No	No
Gladys Poet-Christian Elementary	San Joaquin	K	8	519	40	18	8	0	10	1	4	44	3	34	4	0	3	No	No
Bay View Academy	Monterey	K	8	496	37	13	10	0	4	0	2	41	3	34	15	0	0	Yes	No
Franklin Elementary	Sutter	K	8	483	26	8	9	0	10	0	0	24	1	56	8	1	0	No	No
Park View Elementary	San Joaquin	K	8	467	23	10	8	0	11	0	3	33	0	49	3	0	1	No	No
Colony Oak Elementary	San Joaquin	K	8	437	30	12	12	0	2	1	1	28	0	65	2	0	4	No	No
Creative Arts Charter	San Francisco	K	8	427	20	7	11	0	6	0	1	16	8	57	11	0	0	Yes	No
Whitmore Charter School of Art & Technology	Stanislaus	K	8	422	40	13	8	0	5	0	2	53	1	36	3	0	0	Yes	No
Dixon Montessori Charter	Solano	K	8	412	30	10	11	0	1	0	1	45	0	45	8	0	2	Yes	No
Willow Creek Academy	Marin	K	8	409	40	17	12	0	10	0	1	26	11	42	11	0	0	Yes	No
Goethe International Charter	Los Angeles	K	8	406	23	19	9	0	4	0	2	27	10	41	16	0	0	Yes	No
North Shoreview Montessori	San Mateo	K	8	328	20	12	9	0	18	2	5	21	0	38	16	0	3	No	No
Cadence Park	Orange	K	8	304	26	22	7	0	44	1	2	13	3	24	11	0	0	No	No
Southside Elementary	San Benito	K	8	213	22	16	7	0	0	0	0	57	0	15	0	0	4	No	No
Antioch Charter Academy	Contra Costa	K	8	197	26	13	8	0	17	2	3	32	10	36	2	0	0	Yes	No
Knights Ferry Elementary	Stanislaus	K	8	153	22	7	7	0	0	1	1	15	1	75	3	0	0	No	No

(continued)

School	County	Low Gr.	High Gr.	Total	FR PM %	Eng. Lrn. %	St.w. Dis. %	Am. Ind. %	Asian %	Pas. Isl. %	Fil. %	Hisp./Lat. %	Afr. Am. %	Wh. %	2+ Races %	Fstr %	Home less %	Char ter	DA SS
Los Olivos Elementary	Santa Barbara	K	8	152	22	9	13	0	1	0	0	21	0	71	1	0	0	No	No
Imperial Valley Home School Academy	Imperial	K	8	103	35	11	10	0	0	0	0	64	0	32	1	0	0	Yes	No
Bolinas-Stinson Elementary	Marin	K	8	90	40	8	12	0	1	0	0	17	3	63	13	0	0	No	No
Baypoint Preparatory Academy - San Diego	San Diego	K	8	88	30	9	7	0	3	0	3	47	2	34	10	0	0	Yes	No
Bitterwater-Tully Elementary	San Benito	K	8	35	26	11	5	0	0	0	0	37	0	60	3	0	0	No	No